



Iowa Youth Survey – Alcohol

1999-2005



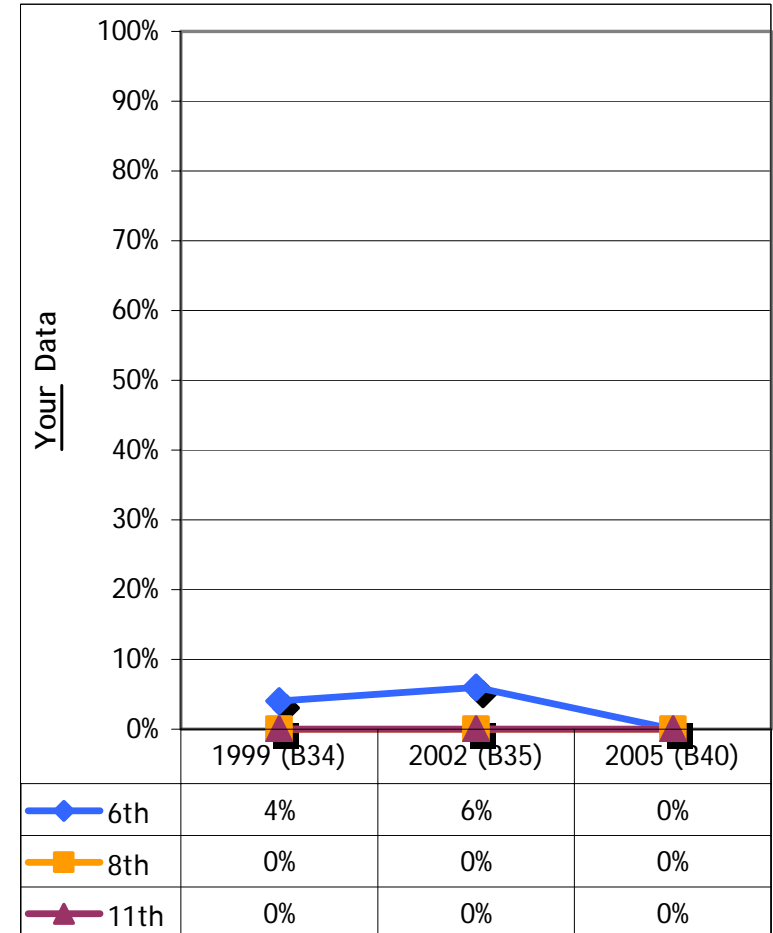
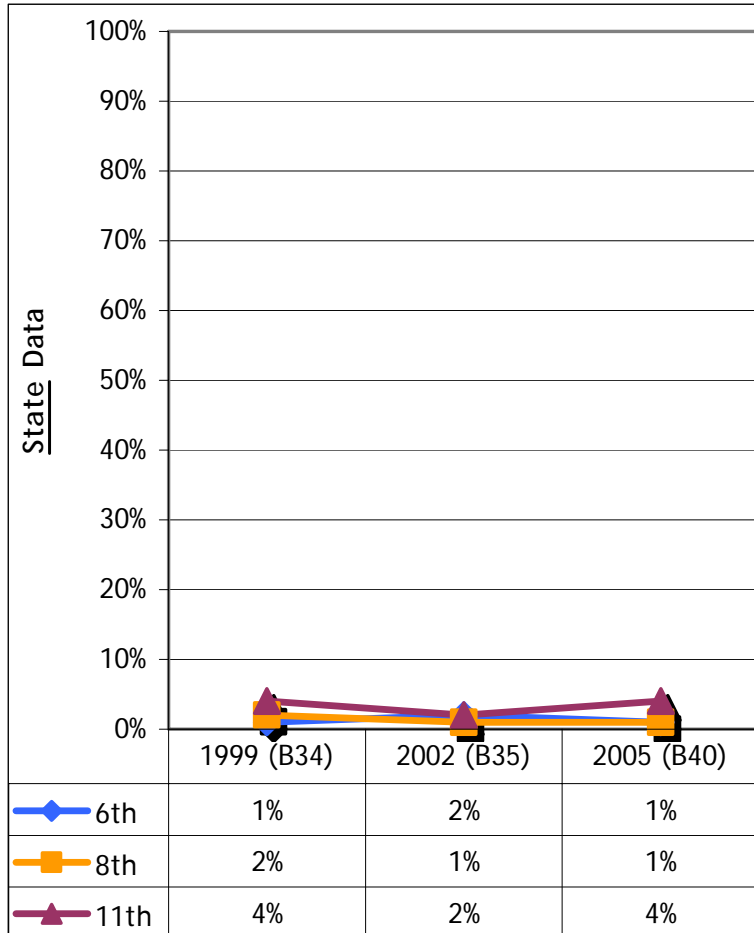
Percentage of students who feel they are currently dependent on alcohol

1999 (B34) 2002 (B35) 2005 (B40)

6th	1%	2%	1%
8th	2%	1%	1%
11th	4%	2%	4%

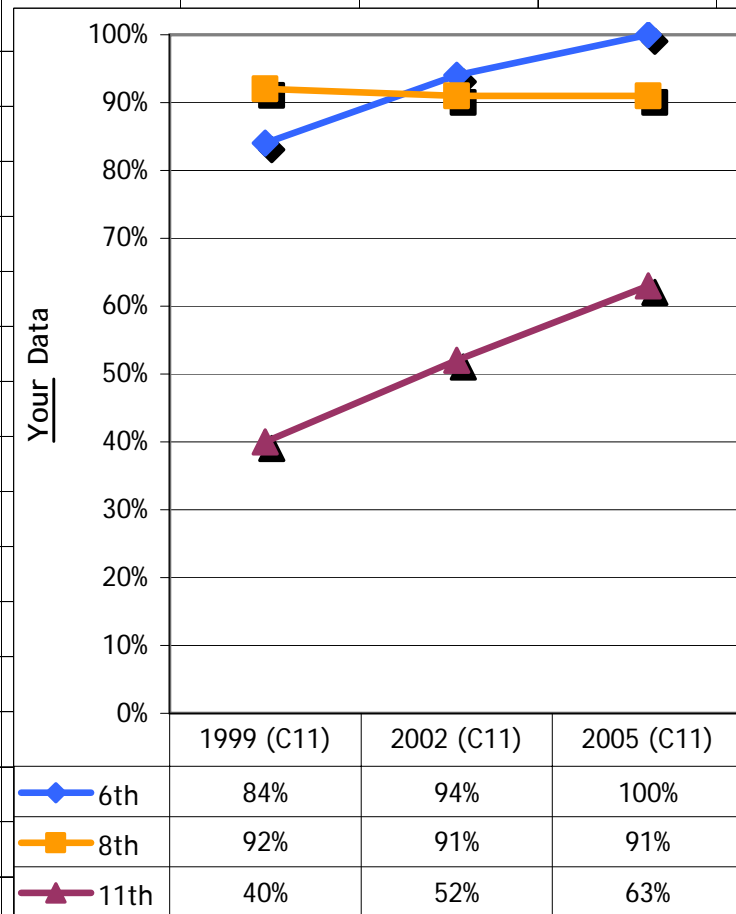
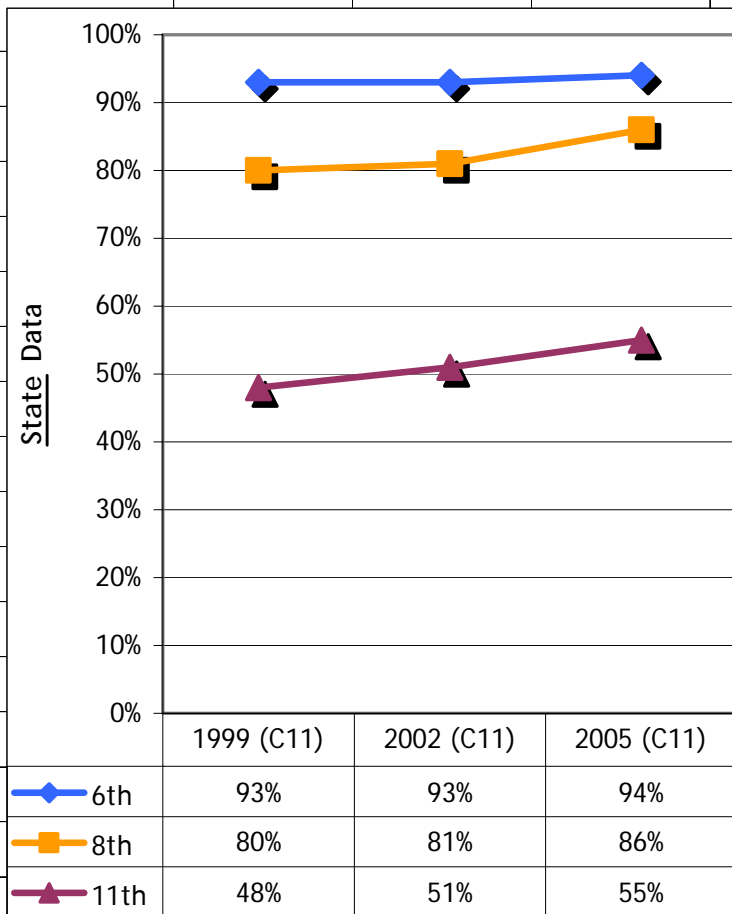
1999 (B34) 2002 (B35) 2005 (B40)

6th	4%	6%	0%
8th	0%	0%	0%
11th	0%	0%	0%



Percentage of students who agree or strongly agree that it is against their values to use alcohol and drugs as a teenager

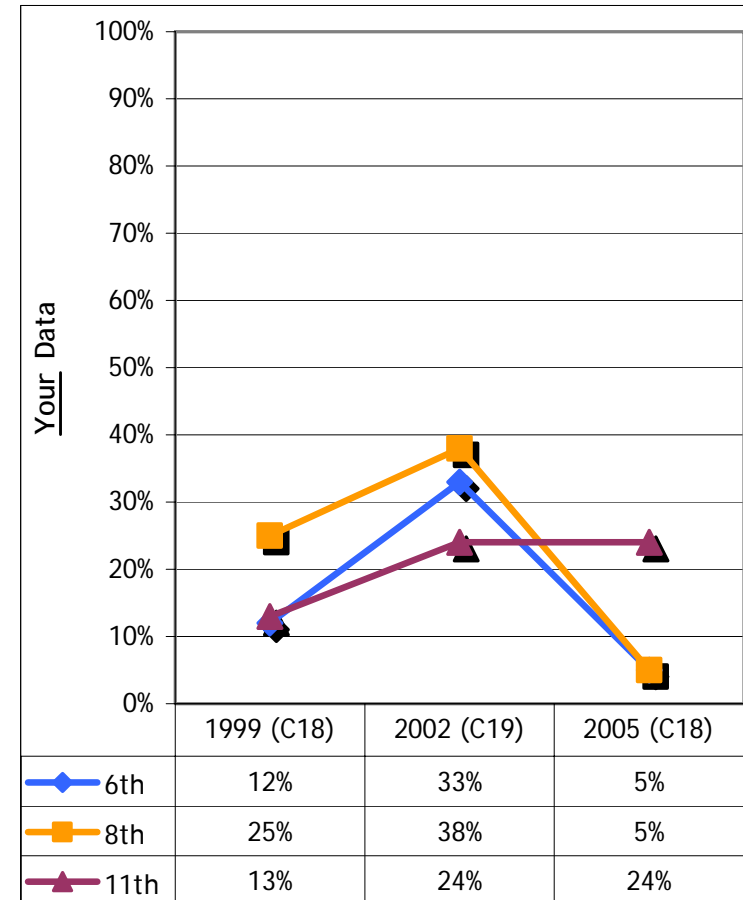
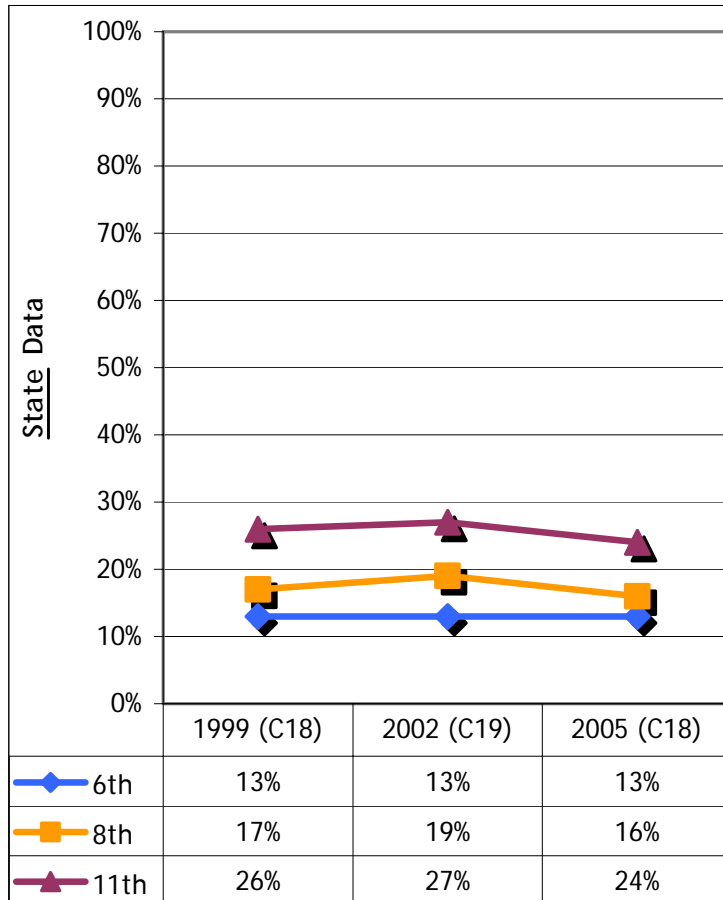
	1999 (C11)	2002 (C11)	2005 (C11)			1999 (C11)	2002 (C11)	2005 (C11)
6th	93%	93%	94%		6th	84%	94%	100%
8th	80%	81%	86%		8th	92%	91%	91%
11th	48%	51%	55%		11th	40%	52%	63%



Percentage of students who think there is a *slight or no risk of harming themselves* if they drink 3 or more drinks of alcohol nearly every day

	1999 (C18)	2002 (C19)	2005 (C18)
6th	13%	13%	13%
8th	17%	19%	16%
11th	26%	27%	24%

	1999 (C18)	2002 (C19)	2005 (C18)
6th	12%	33%	5%
8th	25%	38%	5%
11th	13%	24%	24%



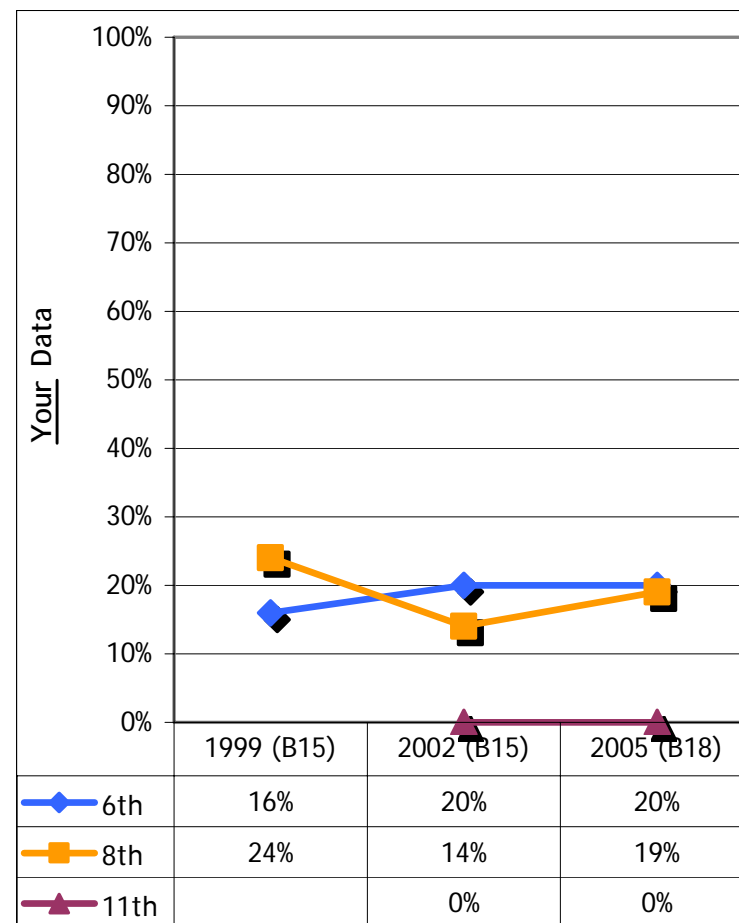
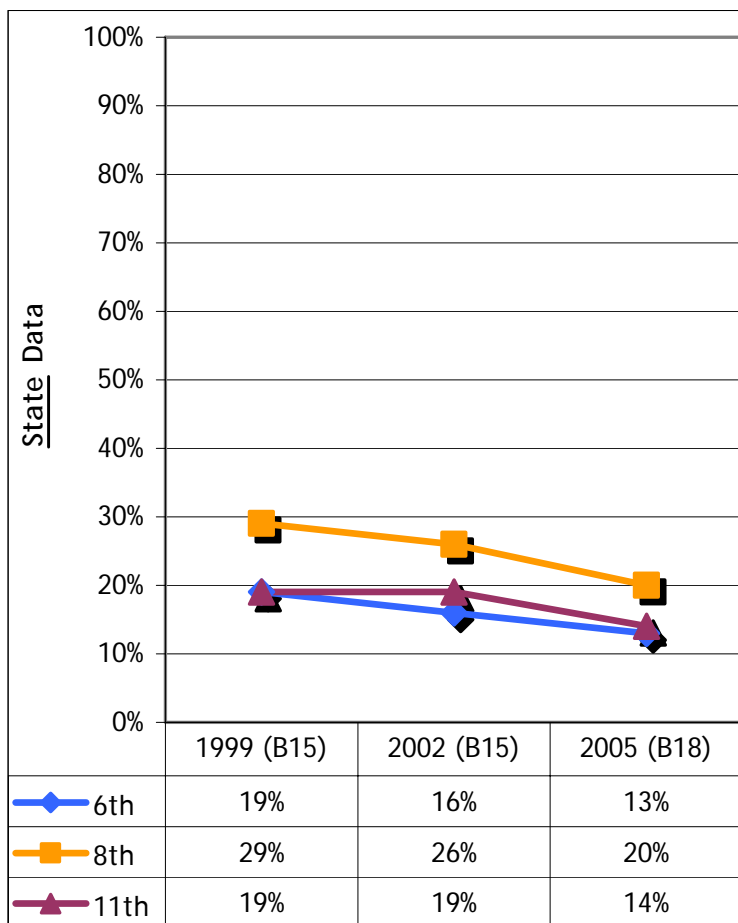
Percentage of students who were 12 or younger when they first drank (more than a few sips) of alcohol (beer, wine, liquor)

1999 (B15) 2002 (B15) 2005 (B18)

6th	19%	16%	13%
8th	29%	26%	20%
11th	19%	19%	14%

1999 (B15) 2002 (B15) 2005 (B18)

6th	16%	20%	20%
8th	24%	14%	19%
11th		0%	0%



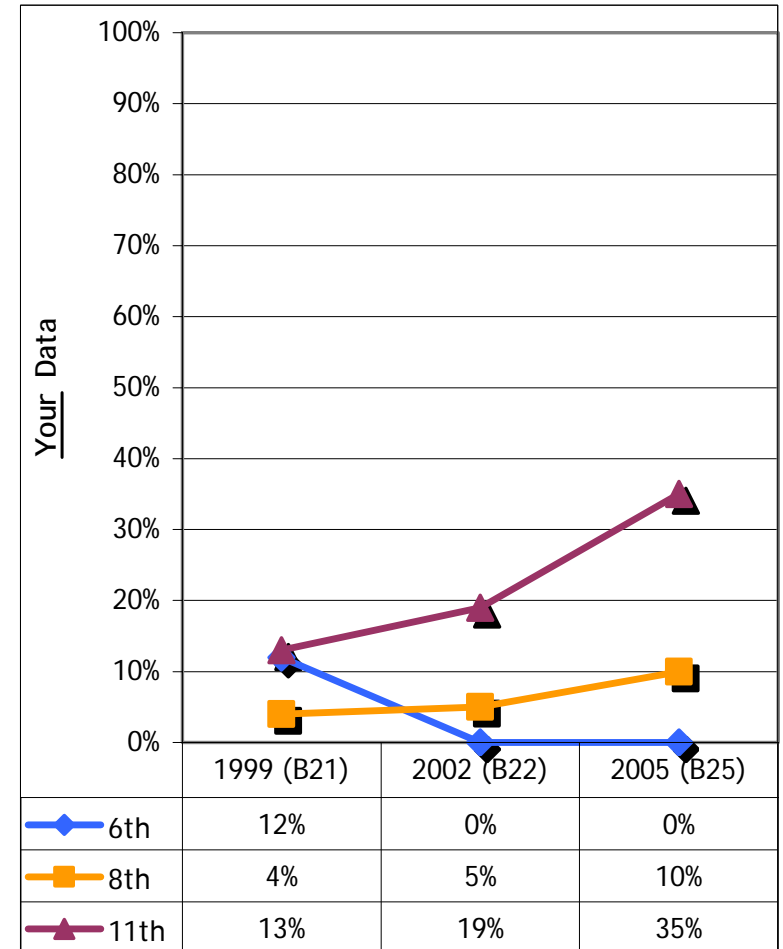
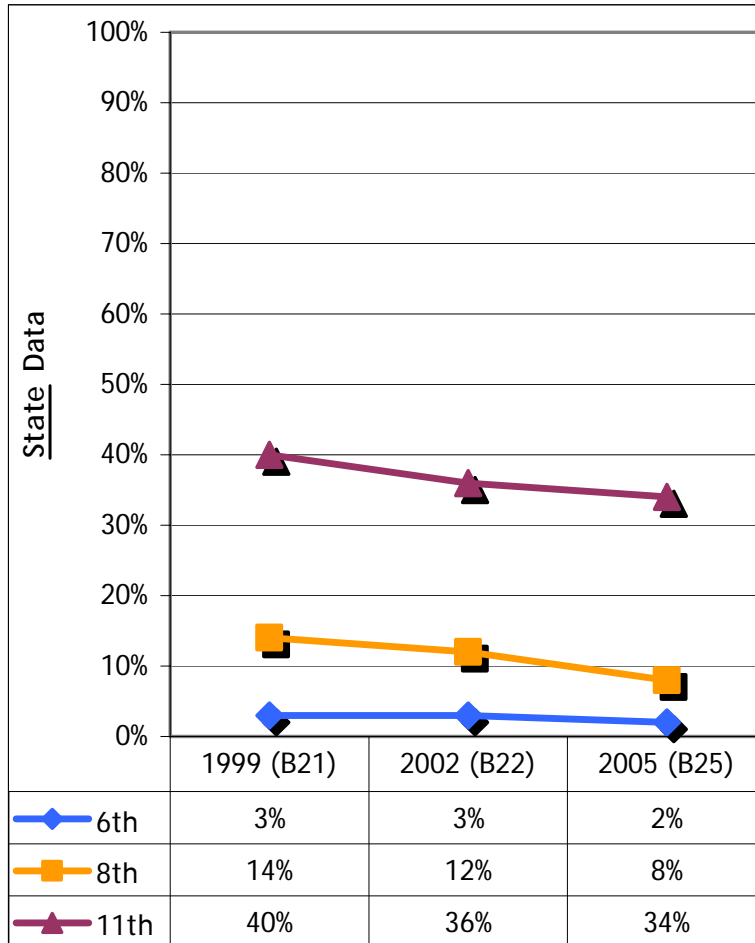
Percentage of students who had 5 or more drinks of alcohol on any day during the last 30 days

1999 (B21) 2002 (B22) 2005 (B25)

6th	3%	3%	2%
8th	14%	12%	8%
11th	40%	36%	34%

1999 (B21) 2002 (B22) 2005 (B25)

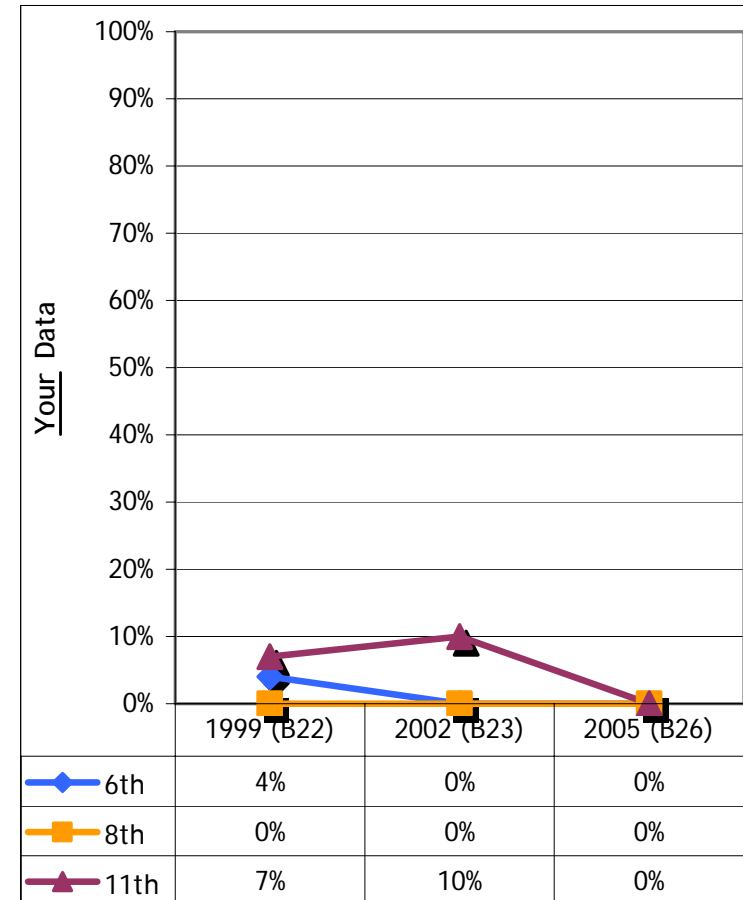
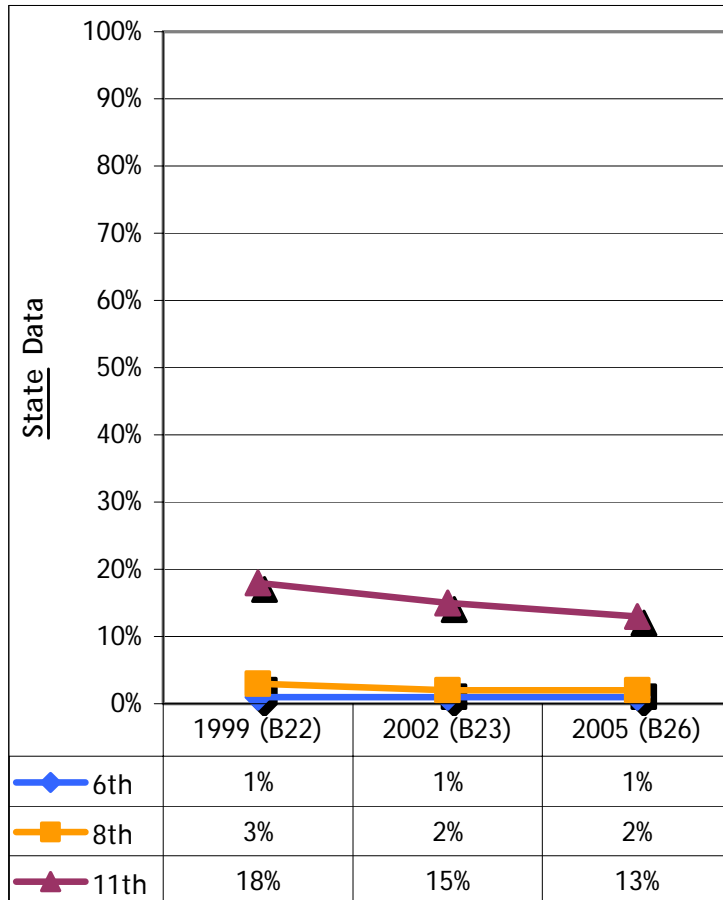
6th	12%	0%	0%
8th	4%	5%	10%
11th	13%	19%	35%



Percentage of students who have *driven a motor vehicle after using alcohol* or other drugs on any day during the last 30 days

	1999 (B22)	2002 (B23)	2005 (B26)
6th	1%	1%	1%
8th	3%	2%	2%
11th	18%	15%	13%

	1999 (B22)	2002 (B23)	2005 (B26)
6th	4%	0%	0%
8th	0%	0%	0%
11th	7%	10%	0%



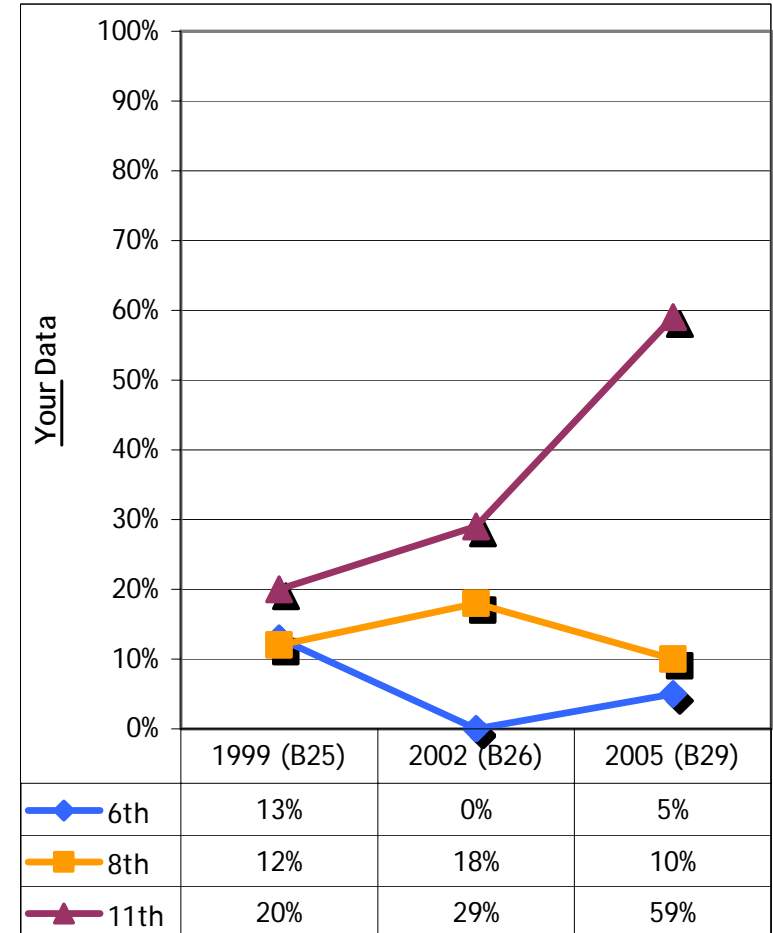
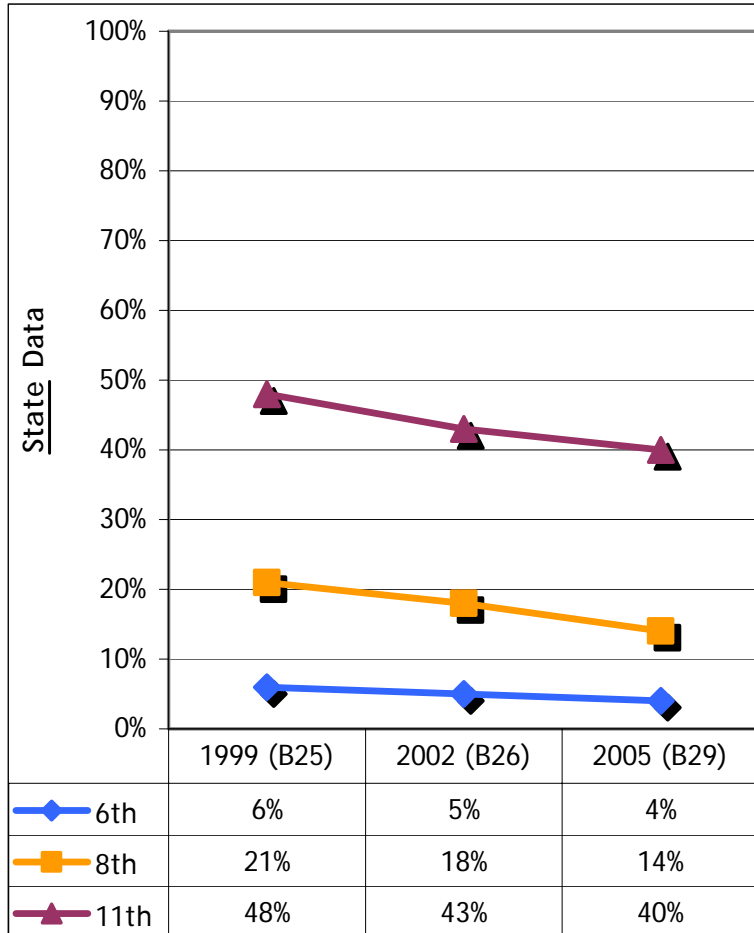
Percentage of students who have had at least one drink of alcohol in the past 30 days

1999 (B25) 2002 (B26) 2005 (B29)

6th	6%	5%	4%
8th	21%	18%	14%
11th	48%	43%	40%

1999 (B25) 2002 (B26) 2005 (B29)

6th	13%	0%	5%
8th	12%	18%	10%
11th	20%	29%	59%



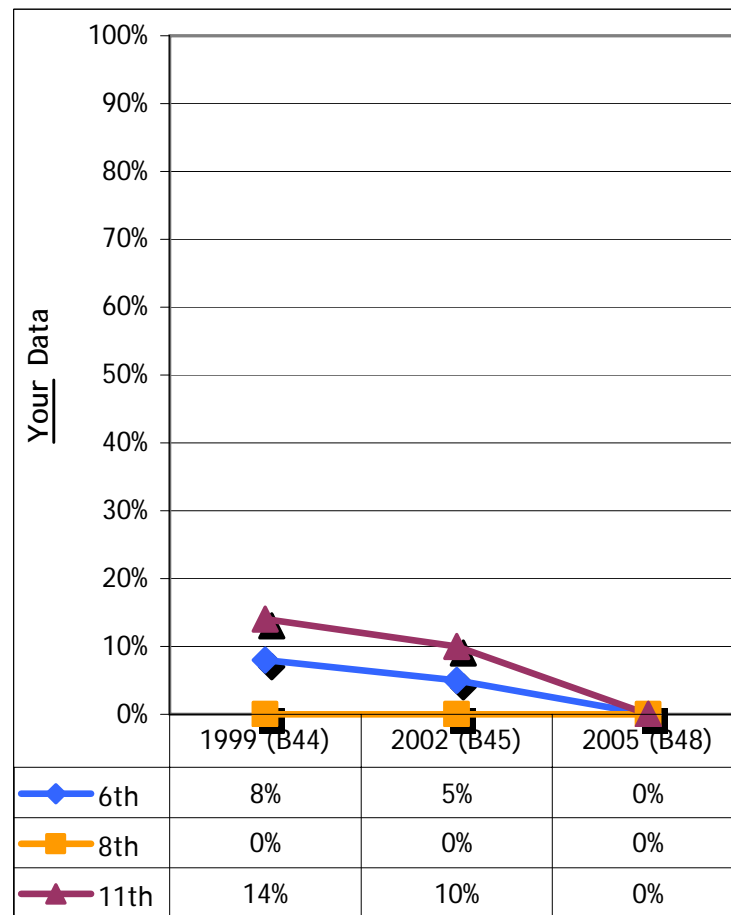
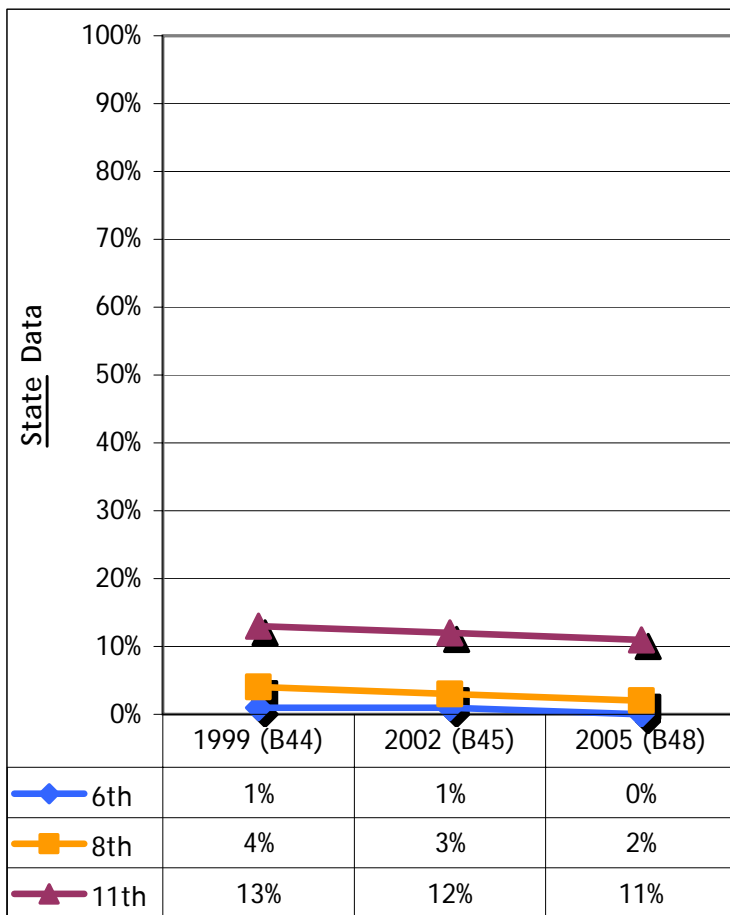
Percentage of students who have used alcohol or other illegal drugs on school property in the past 12 months

1999 (B44) 2002 (B45) 2005 (B48)

6th	1%	1%	0%
8th	4%	3%	2%
11th	13%	12%	11%

1999 (B44) 2002 (B45) 2005 (B48)

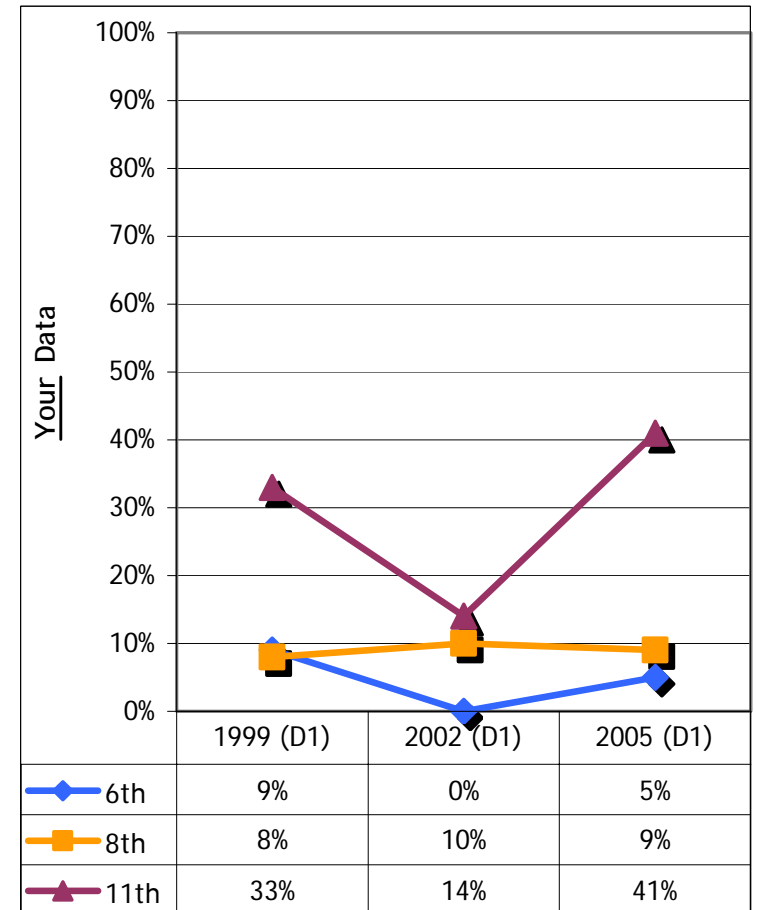
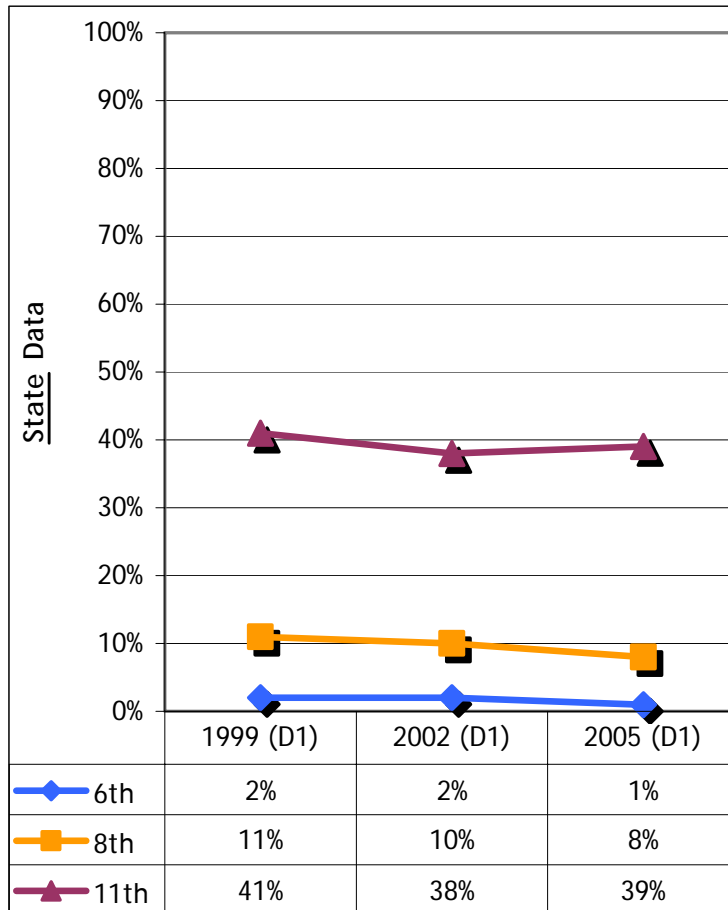
6th	8%	5%	0%
8th	0%	0%	0%
11th	14%	10%	0%



Percentage of students who report their best friends would not think it was wrong at all for them to drink alcohol

	1999 (D1)	2002 (D1)	2005 (D1)
6th	2%	2%	1%
8th	11%	10%	8%
11th	41%	38%	39%

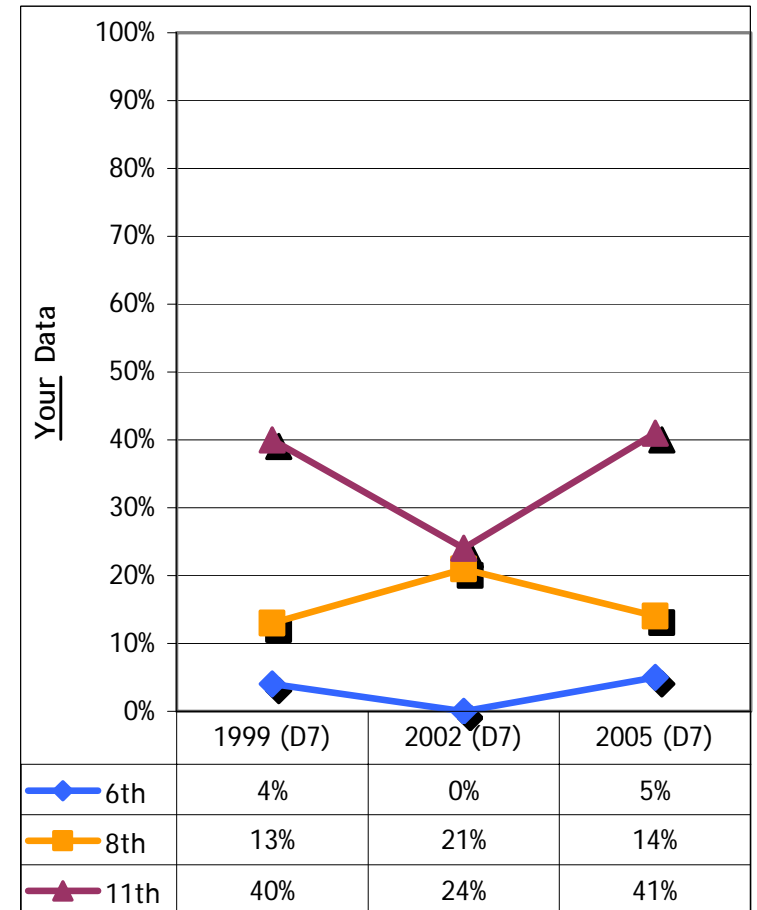
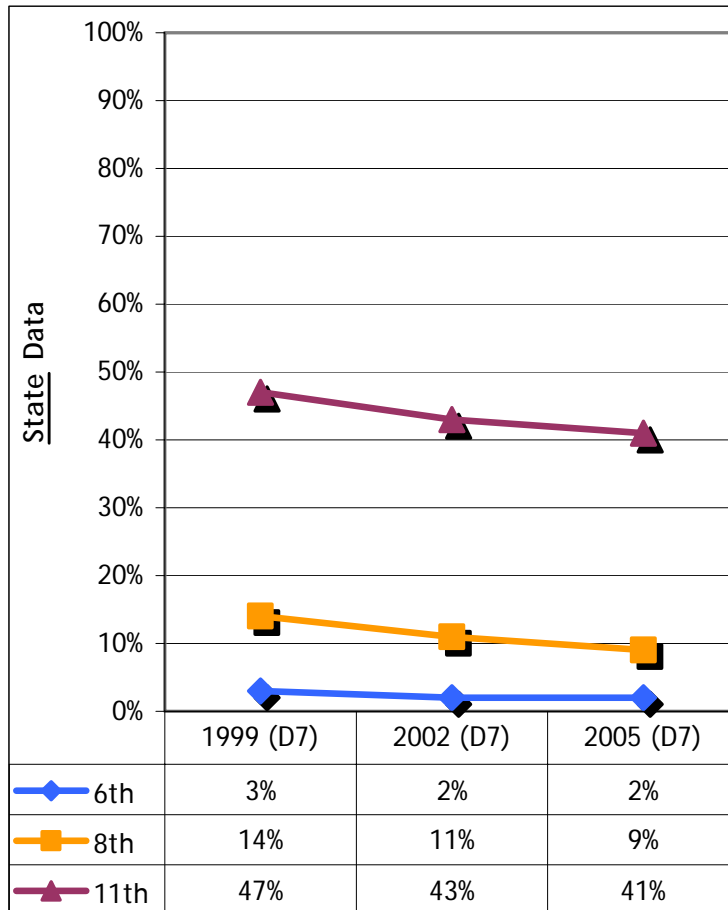
	1999 (D1)	2002 (D1)	2005 (D1)
6th	9%	0%	5%
8th	8%	10%	9%
11th	33%	14%	41%



Percentage of students who report their best friends would not think it was wrong at all for them to go to a party where kids under 21 were using alcohol

	1999 (D7)	2002 (D7)	2005 (D7)
6th	3%	2%	2%
8th	14%	11%	9%
11th	47%	43%	41%

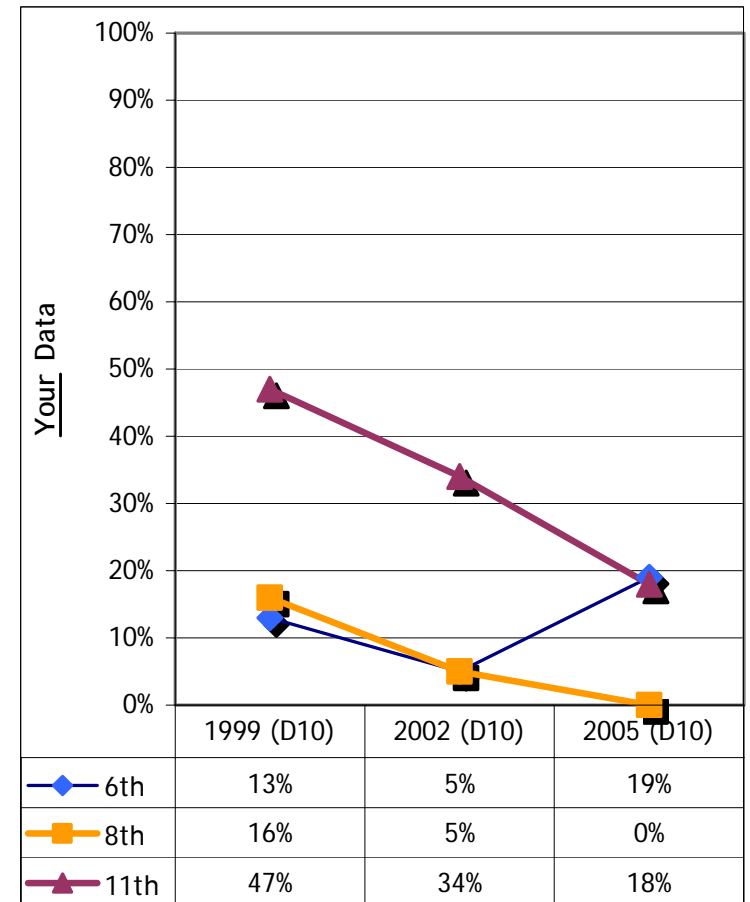
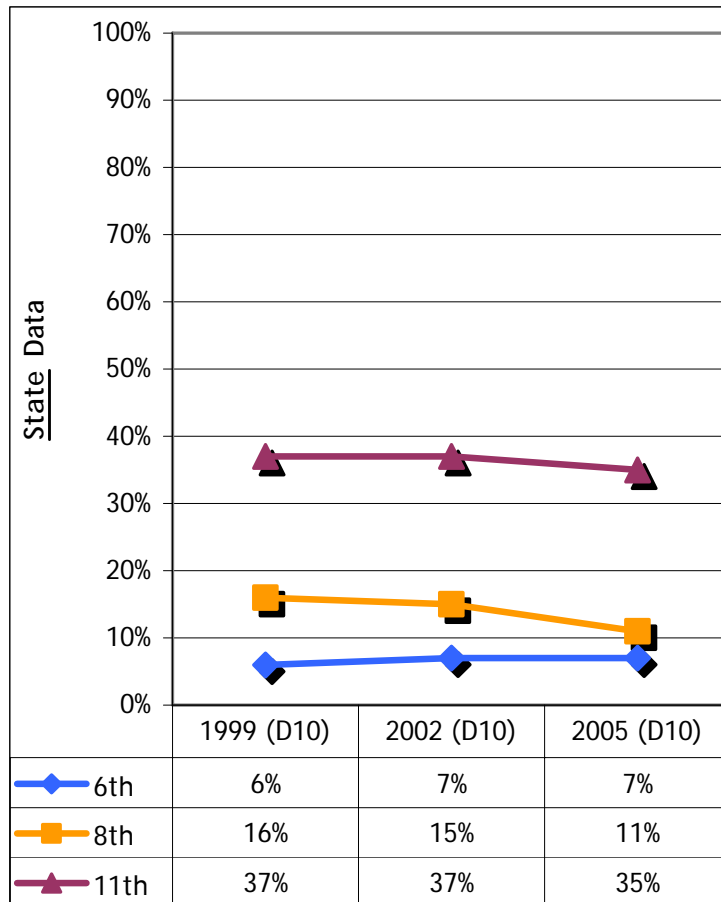
	1999 (D7)	2002 (D7)	2005 (D7)
6th	4%	0%	5%
8th	13%	21%	14%
11th	40%	24%	41%



Percentage of students who report they would be more or a lot more popular with other students if they drank alcoholic beverages

	1999 (D10)	2002 (D10)	2005 (D10)
6th	6%	7%	7%
8th	16%	15%	11%
11th	37%	37%	35%

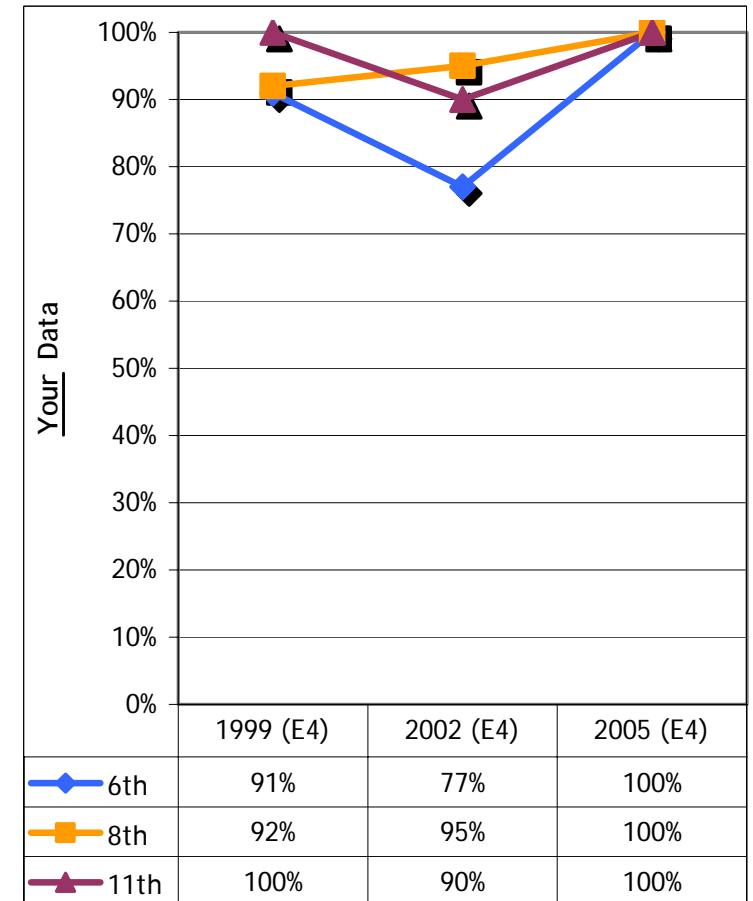
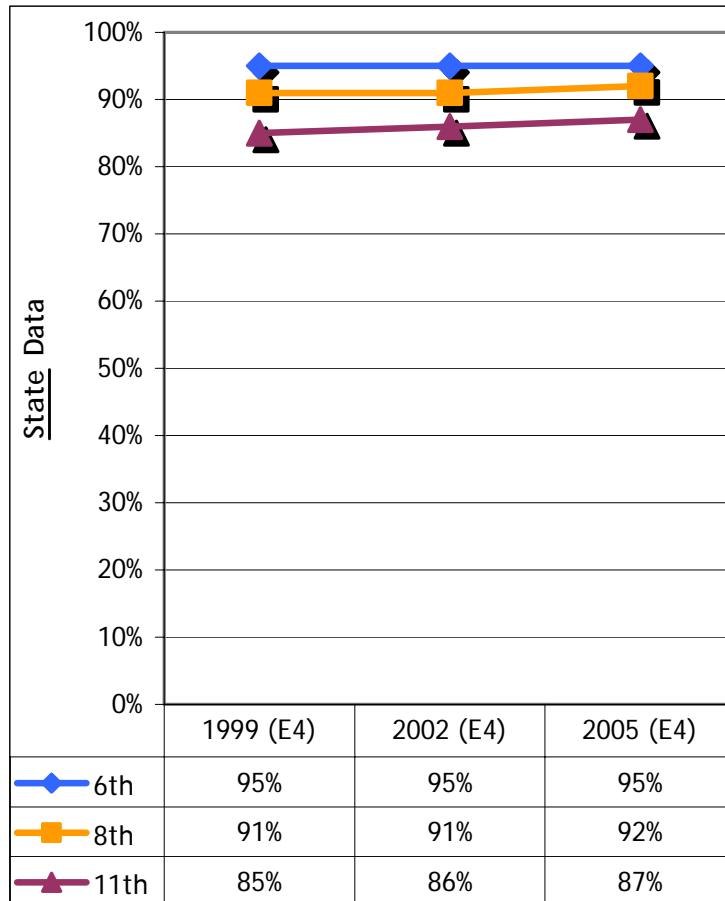
	1999 (D10)	2002 (D10)	2005 (D10)
6th	13%	5%	19%
8th	16%	5%	0%
11th	47%	34%	18%



Percentage of students who agree or strongly agree that students caught drinking, smoking, or using an illegal drug are not allowed to participate in any extracurricular activities

	1999 (E4)	2002 (E4)	2005 (E4)
6th	95%	95%	95%
8th	91%	91%	92%
11th	85%	86%	87%

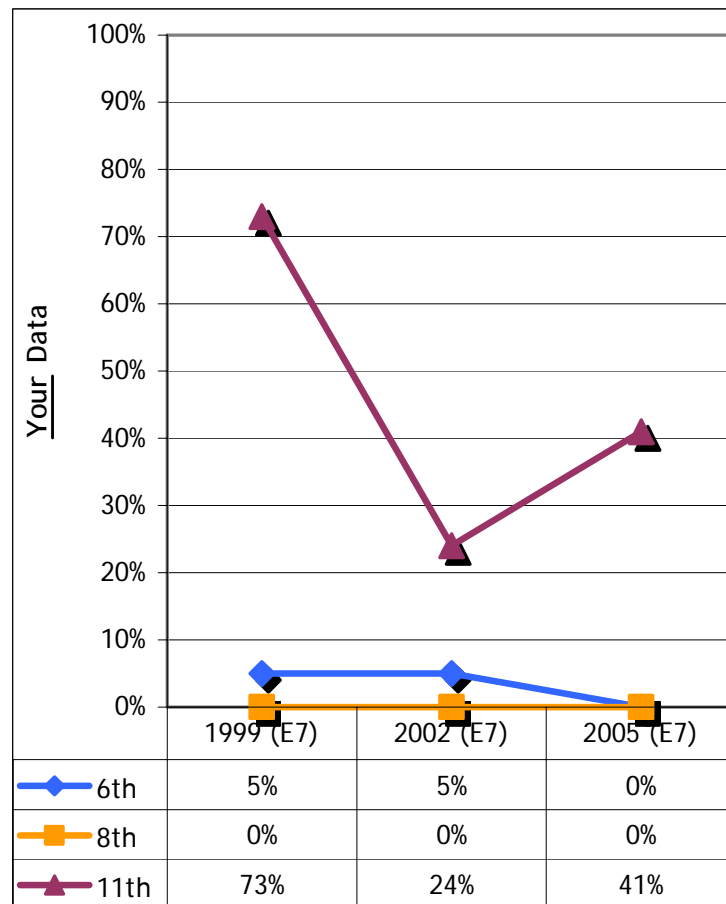
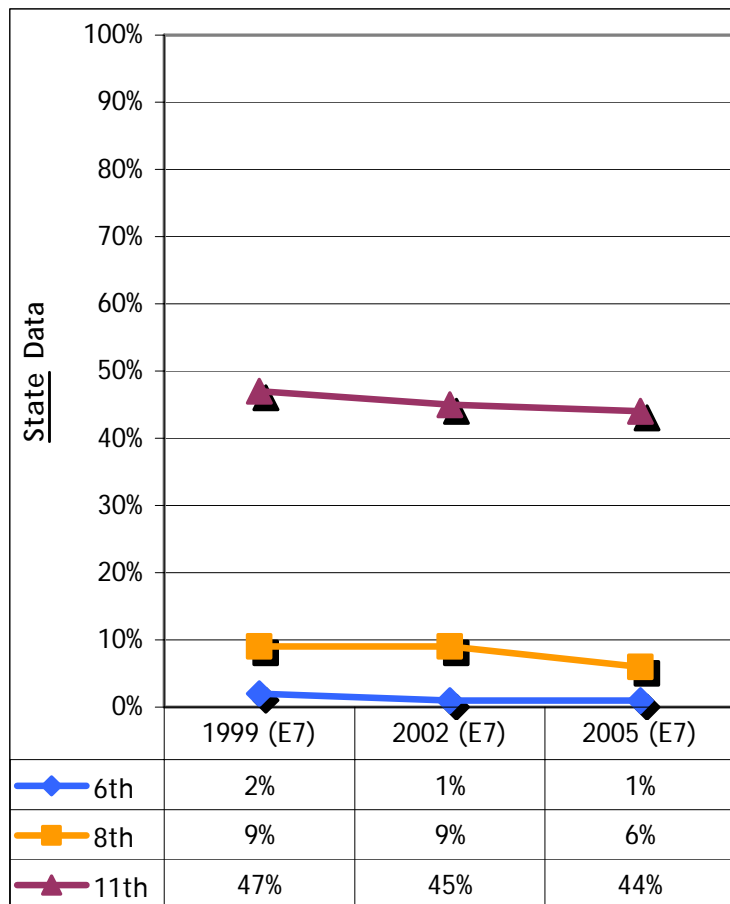
	1999 (E4)	2002 (E4)	2005 (E4)
6th	91%	77%	100%
8th	92%	95%	100%
11th	100%	90%	100%



Percentage of students who report the students in their school would not think it was wrong at all for them to drink alcohol

	1999 (E7)	2002 (E7)	2005 (E7)
6th	2%	1%	1%
8th	9%	9%	6%
11th	47%	45%	44%

	1999 (E7)	2002 (E7)	2005 (E7)
6th	5%	5%	0%
8th	0%	0%	0%
11th	73%	24%	41%



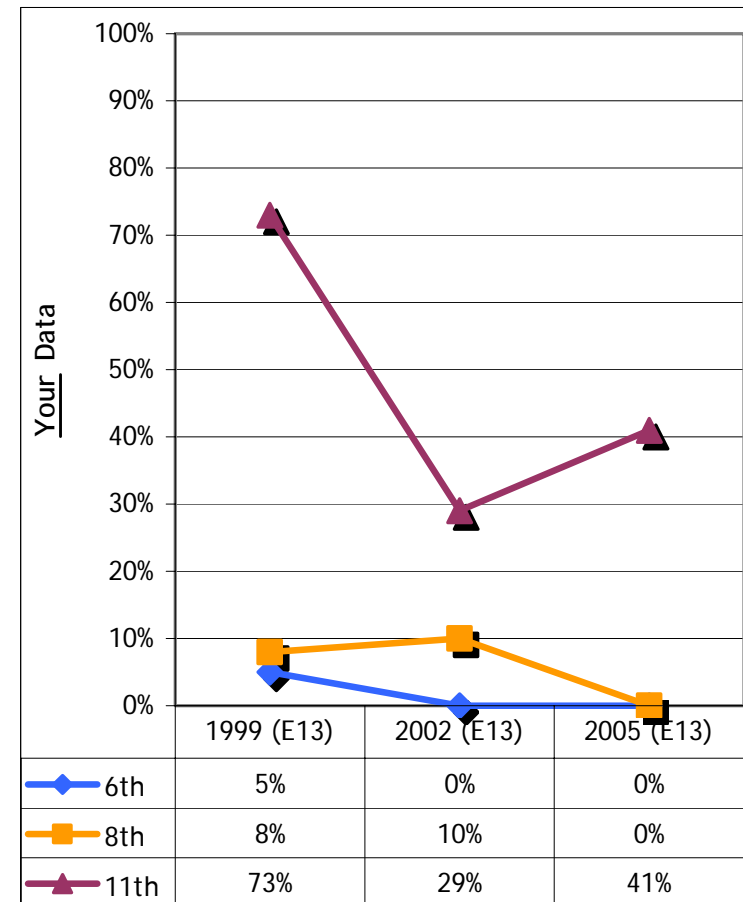
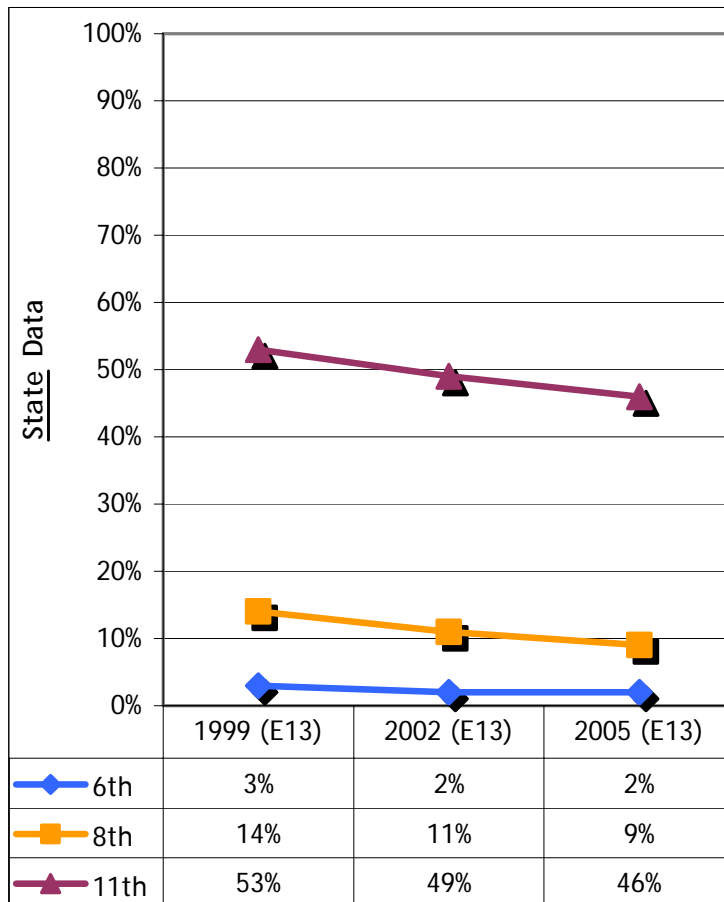
Percentage of students who report the students in their school would not think it was wrong at all for them to go to a party where kids under 21 were using alcohol

1999 (E13) 2002 (E13) 2005 (E13)

6th	3%	2%	2%
8th	14%	11%	9%
11th	53%	49%	46%

1999 (E13) 2002 (E13) 2005 (E13)

6th	5%	0%	0%
8th	8%	10%	0%
11th	73%	29%	41%



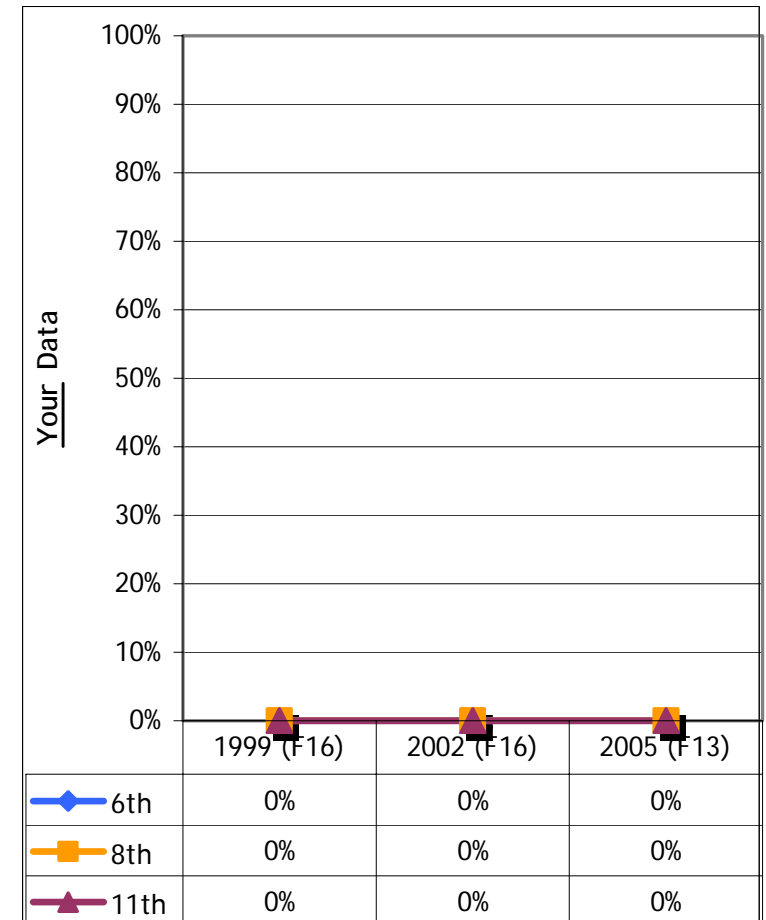
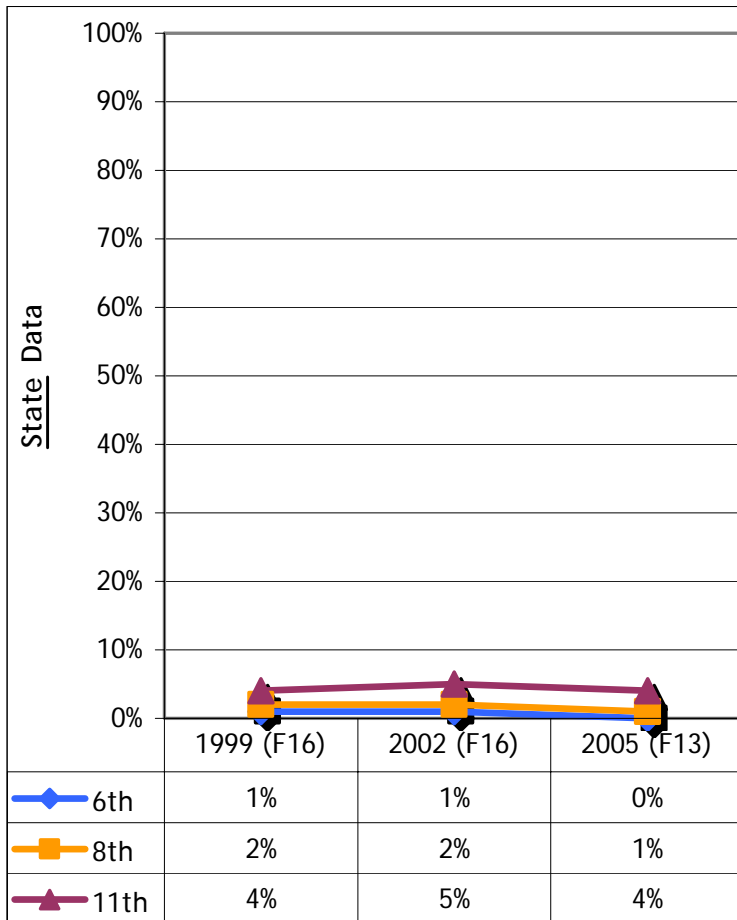
Percentage of students who report that their parents would not think it was wrong at all for them to drink alcohol without their permission

1999 (F16) 2002 (F16) 2005 (F13)

6th	1%	1%	0%
8th	2%	2%	1%
11th	4%	5%	4%

1999 (F16) 2002 (F16) 2005 (F13)

6th	0%	0%	0%
8th	0%	0%	0%
11th	0%	0%	0%



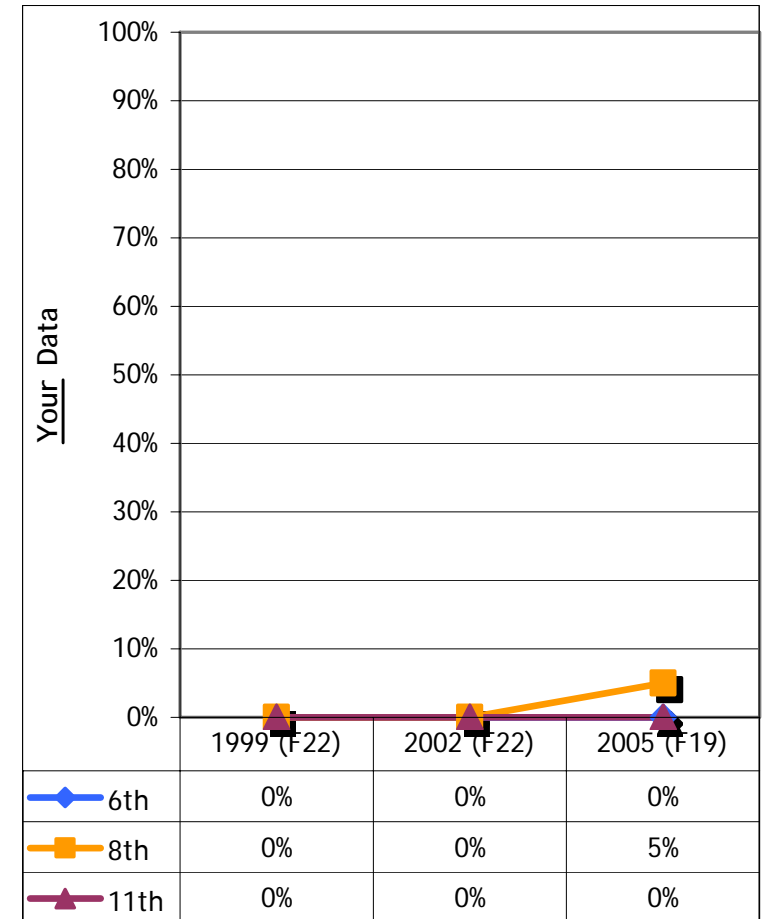
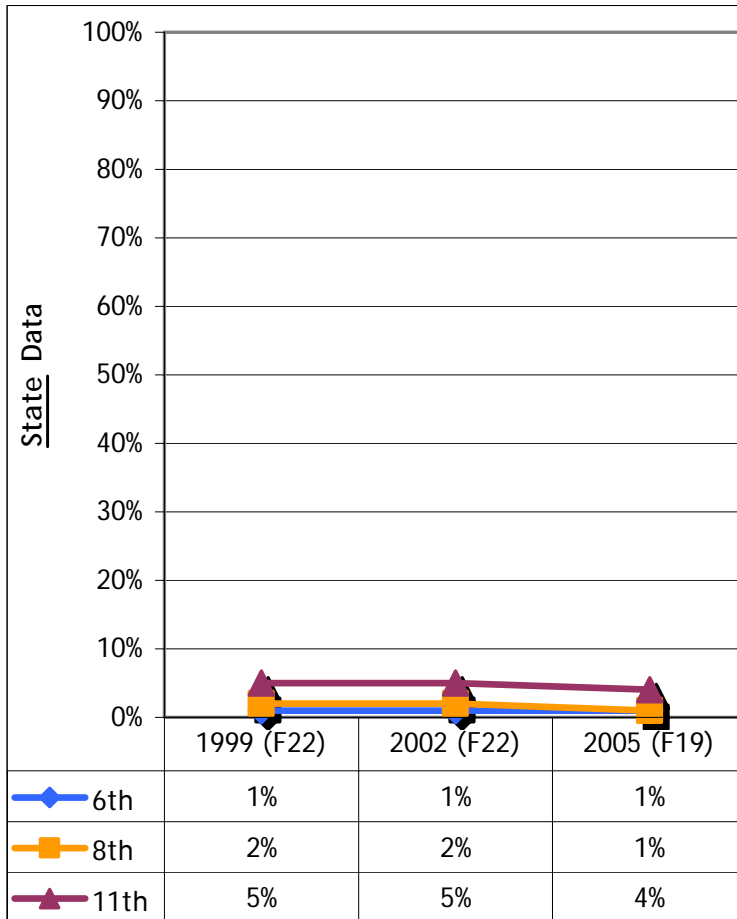
Percentage of students who report that their parents would not think it was wrong at all for them to go to a party where kids under 21 were using alcohol

1999 (F22) 2002 (F22) 2005 (F19)

6th	1%	1%	1%
8th	2%	2%	1%
11th	5%	5%	4%

1999 (F22) 2002 (F22) 2005 (F19)

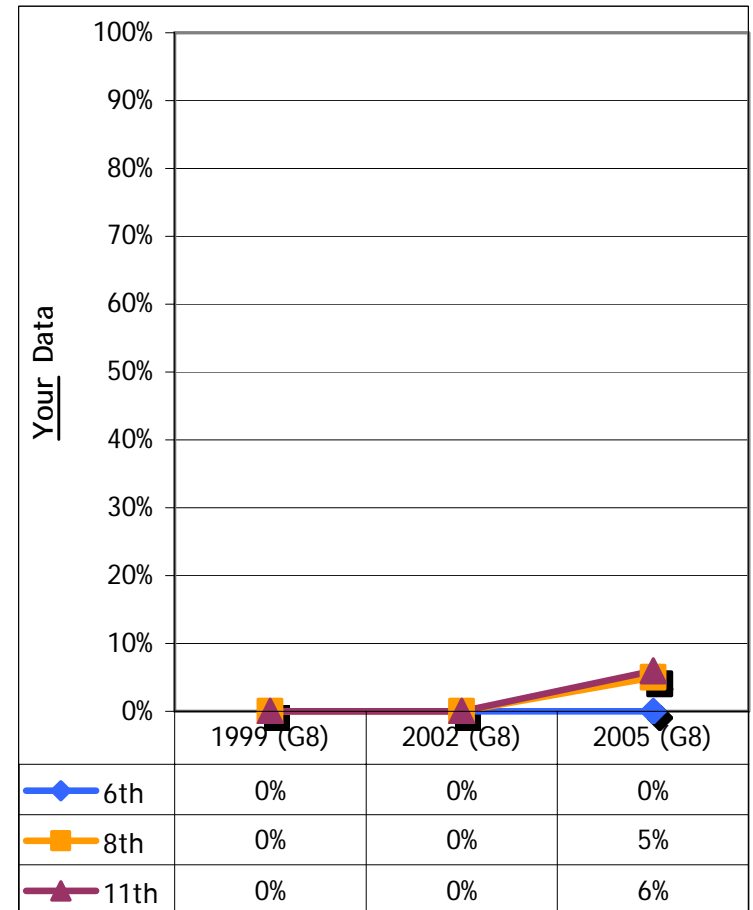
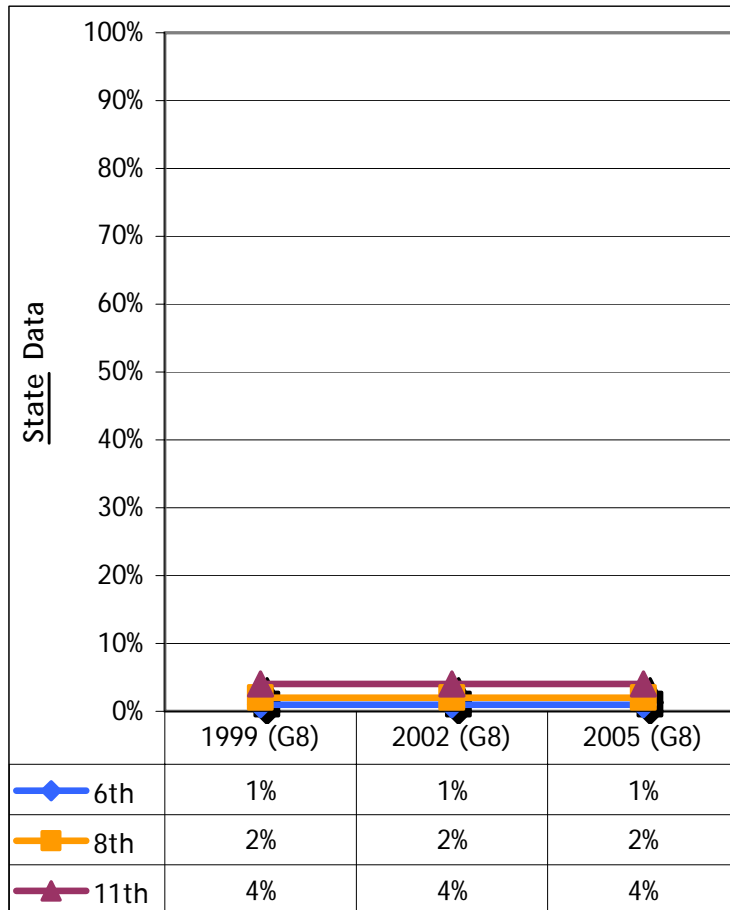
6th	0%	0%	0%
8th	0%	0%	5%
11th	0%	0%	0%



Percentage of students who report that most adults in their community would not think it was wrong at all for them to drink alcohol

	1999 (G8)	2002 (G8)	2005 (G8)
6th	1%	1%	1%
8th	2%	2%	2%
11th	4%	4%	4%

	1999 (G8)	2002 (G8)	2005 (G8)
6th	0%	0%	0%
8th	0%	0%	5%
11th	0%	0%	6%



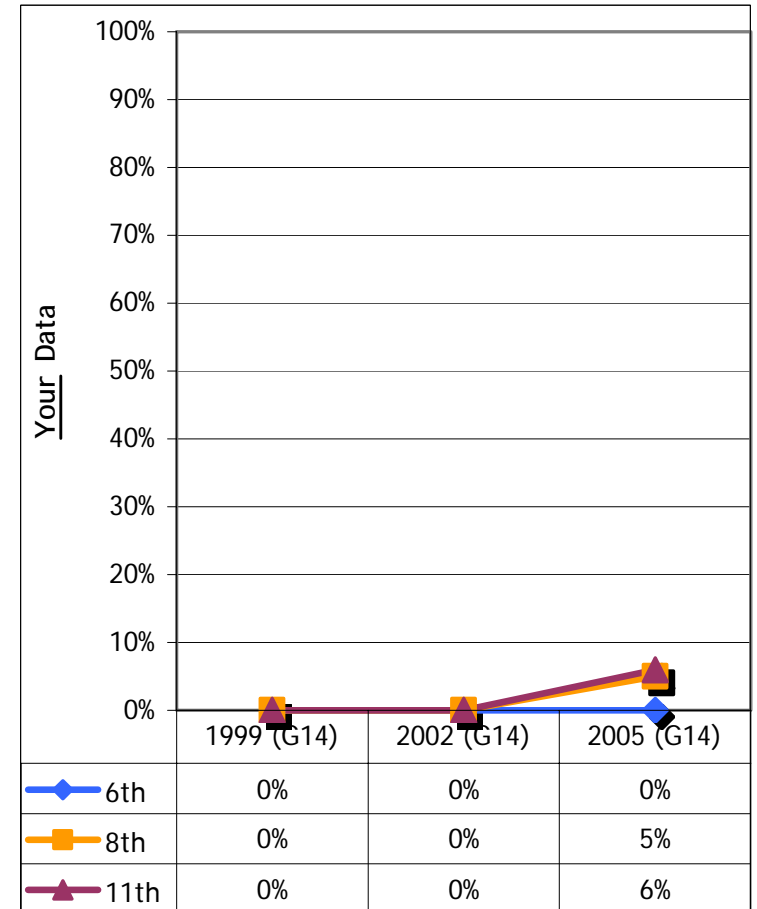
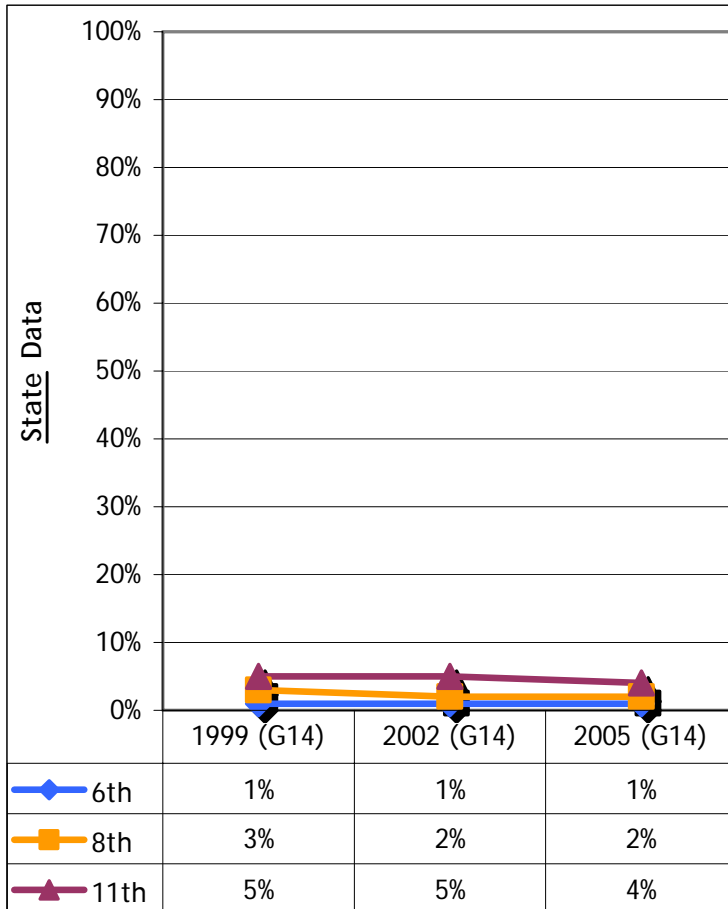
Percentage of students who report that most adults in their community would not think it was wrong at all for them to go to a party where kids under 21 were using alcohol

1999 (G14) 2002 (G14) 2005 (G14)

6th	1%	1%	1%
8th	3%	2%	2%
11th	5%	5%	4%

1999 (G14) 2002 (G14) 2005 (G14)

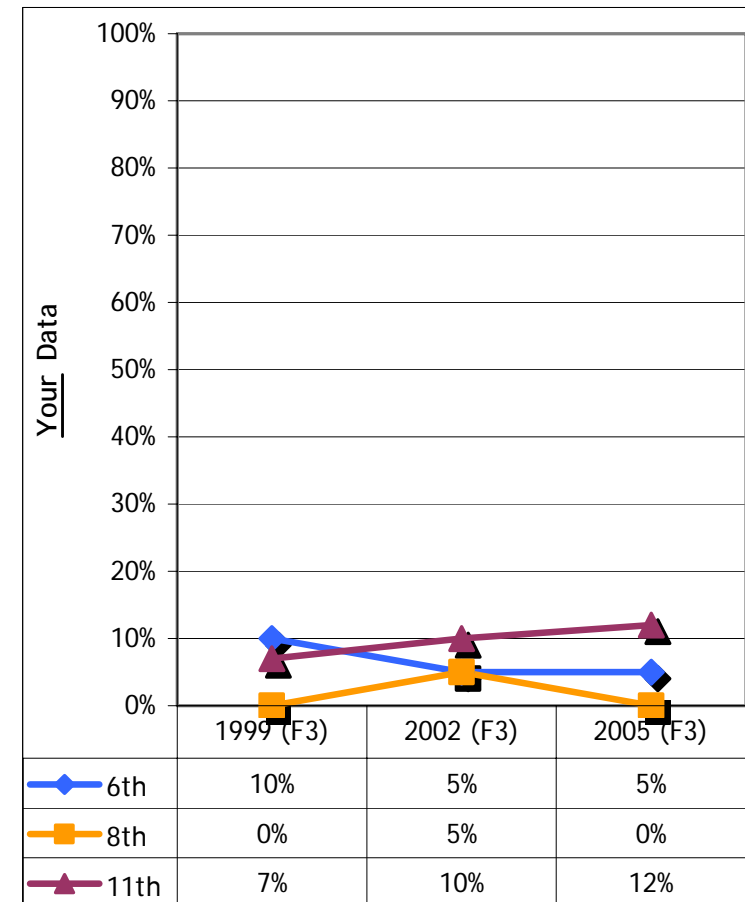
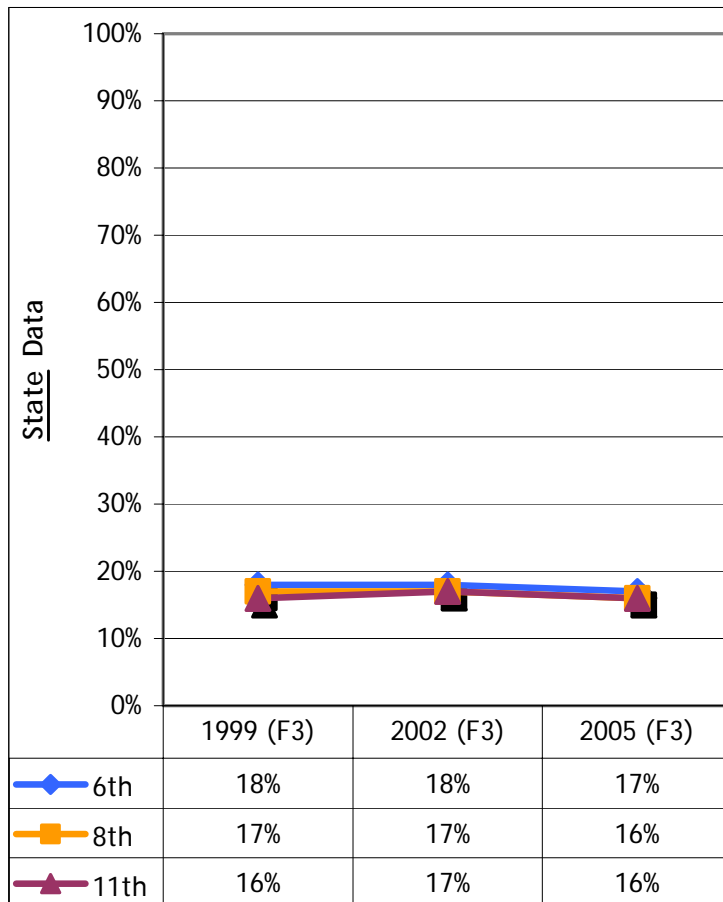
6th	0%	0%	0%
8th	0%	0%	5%
11th	0%	0%	6%



Percentage of students who agree or strongly agree that there are people living in their home who have a serious alcohol or drug problem

	1999 (F3)	2002 (F3)	2005 (F3)
6th	18%	18%	17%
8th	17%	17%	16%
11th	16%	17%	16%

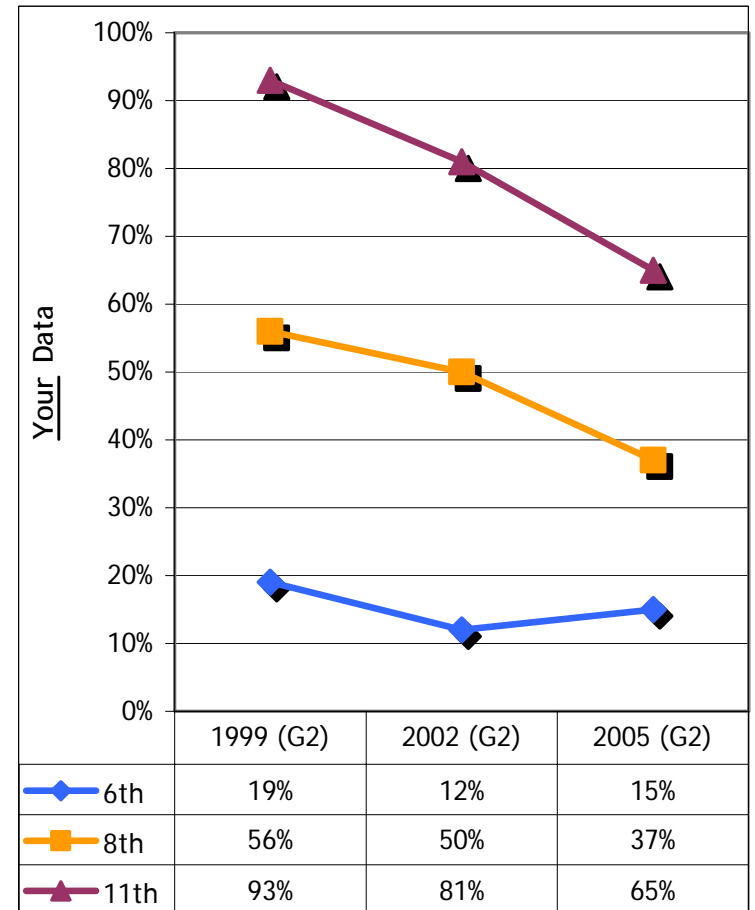
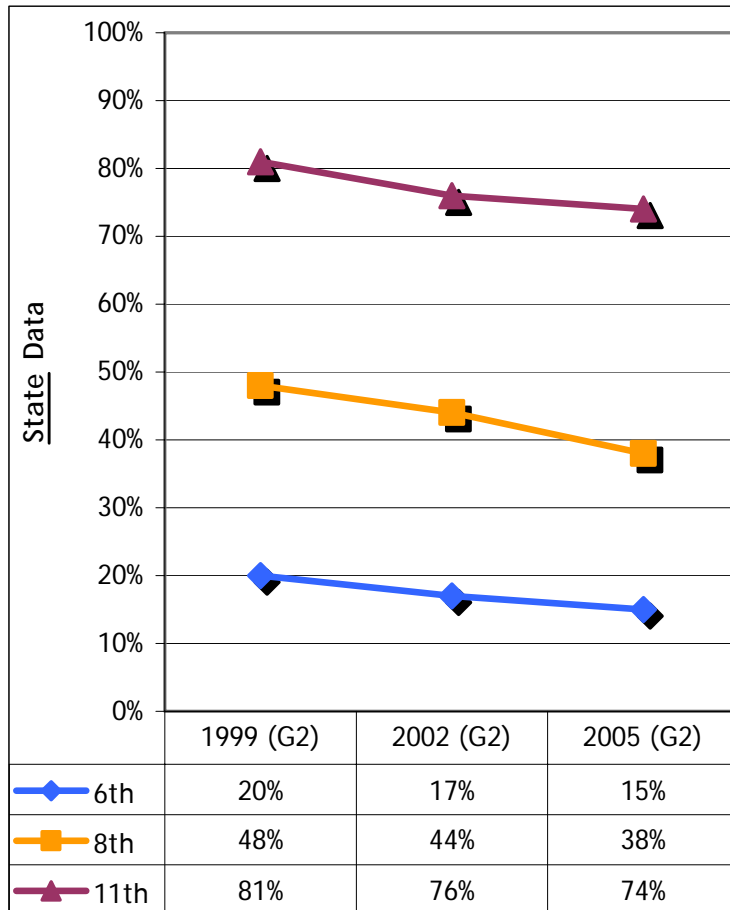
	1999 (F3)	2002 (F3)	2005 (F3)
6th	10%	5%	5%
8th	0%	5%	0%
11th	7%	10%	12%



Percentage of students who think it would be easy or very easy to get alcoholic beverages in their neighborhood or community

	1999 (G2)	2002 (G2)	2005 (G2)
6th	20%	17%	15%
8th	48%	44%	38%
11th	81%	76%	74%

	1999 (G2)	2002 (G2)	2005 (G2)
6th	19%	12%	15%
8th	56%	50%	37%
11th	93%	81%	65%



Percentage of students who disagree or strongly disagree that there are enough places to go that are alcohol and drug free

1999 (G21) 2002 (G21) 2005 (G21)

6th	15%	16%	16%
8th	24%	23%	21%
11th	46%	39%	33%

1999 (G21) 2002 (G21) 2005 (G21)

6th	15%	27%	10%
8th	12%	32%	10%
11th	40%	24%	47%

