

Farragut Board and Community Discussion

April 7, 2008
6:30 p.m.



Community Support – A Strength for our school in the past.

- PTO

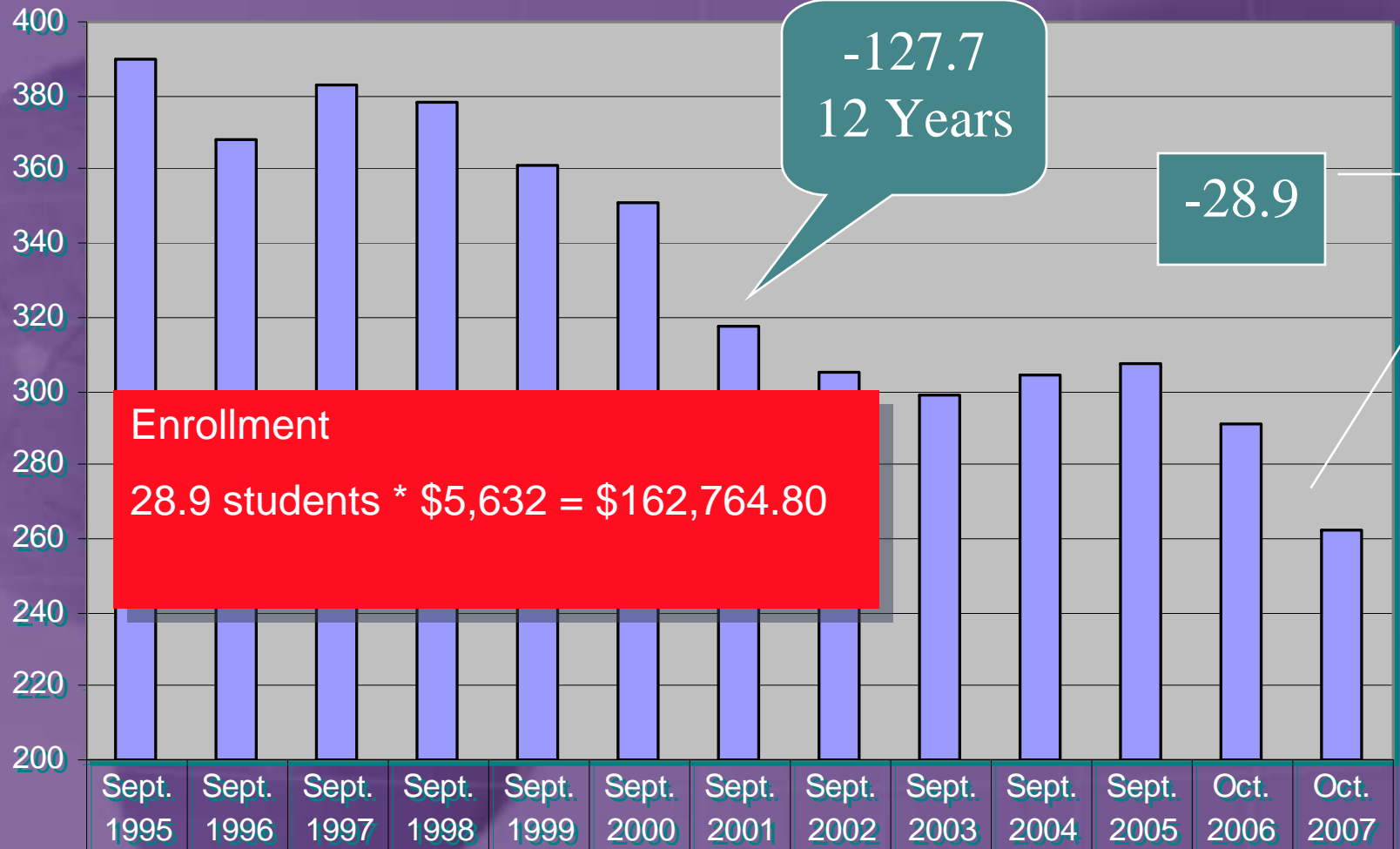
- Provide opportunities for students.
- Assist with programs
- Elementary & High School
- Aid in support for HVAC

- School Improvement Advisory Committee

- Help the board make educational decisions
- Learn what is happening in the school.
- Vocational/Nutritional Programs

Enrollment

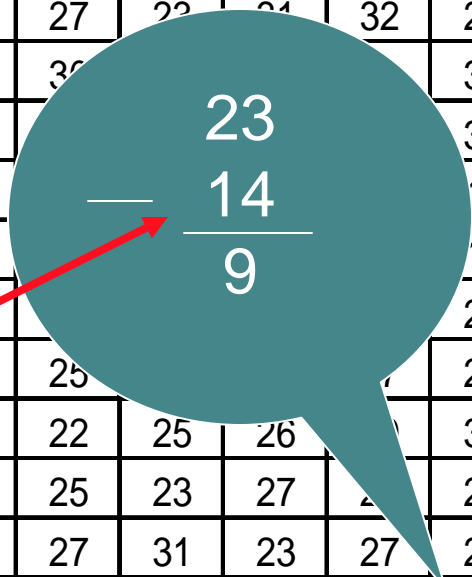
Farragut's Certified Enrollment History



	Sept. 1995	Sept. 1996	Sept. 1997	Sept. 1998	Sept. 1999	Sept. 2000	Sept. 2001	Sept. 2002	Sept. 2003	Sept. 2004	Sept. 2005	Oct. 2006	Oct. 2007
Enrollment	390	368	383	378	361	350.7	317.4	305.1	299.1	304.3	307.3	291.2	262.3

Farragut Enrollment Projections

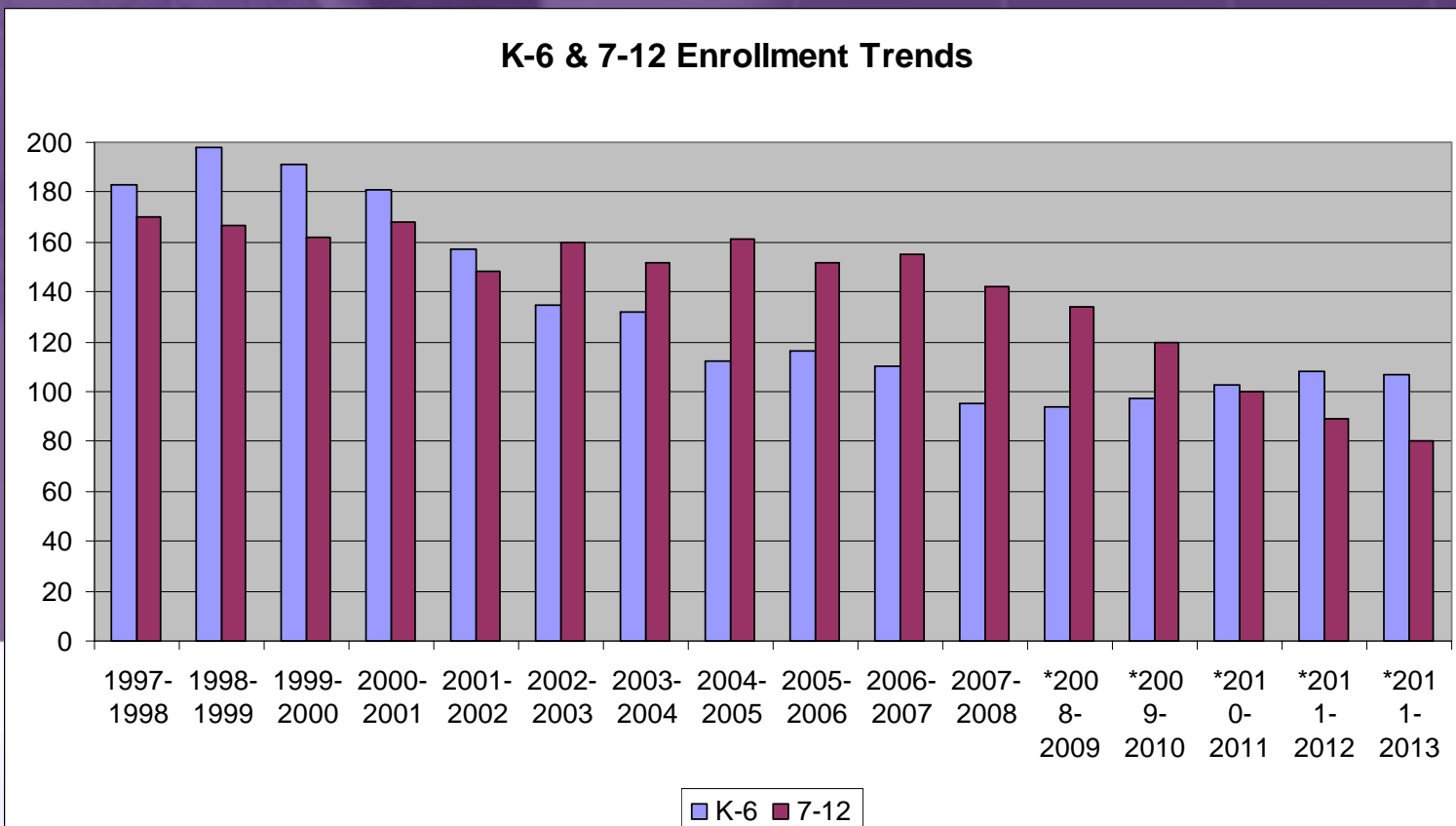
Year	K	1	2	3	4	5	6	7	8	9	10	11	12	K-12	% Loss
1992-1993	27	27	29	33	24	30	34	32	36	22	36	23	31	384	
1993-1994	30	33	30	26	31	24	31	31	28	38	18	33	23	376	-2.08
1994-1995	18	31	29	30	30	32	21	29	31	28	37	18	31	365	-2.93
1995-1996	25	19	30	30	29	32	26	29	26	33	25	36	19	359	-1.64
1996-1997	19	28	20	24	28	25	30	28	24	31	33	28	37	355	-1.11
1997-1998	29	21	30	25	25	29	24	31	27	22	24	32	26	353	-0.56
1998-1999	25	34	19	34	26	29	31	25	36	30	30	36	36	365	3.40
1999-2000	26	23	31	21	31	27	32	29	30	30	30	33	33	353	-3.29
2000-2001	27	24	19	30	23	33	25	34	30	30	30	19	19	346	-1.98
2001-2002	11	26	24	20	26	24	26	25	25	25	25	19	19	305	-11.85
2002-2003	11	10	22	23	20	27	22	25	25	25	25	23	23	295	-3.28
2003-2004	15	12	11	22	22	22	28	22	25	25	25	22	22	284	-3.73
2004-2005	13	11	11	10	24	23	20	27	22	25	26	21	31	273	-3.87
2005-2006	21	17	12	12	11	20	23	24	25	23	27	22	28	268	-1.83
2006-2007	23	15	13	12	13	13	21	25	27	31	23	27	22	265	-1.12
2007-2008	14	19	16	9	11	11	15	19	24	20	31	25	23	237	-10.57
*2008-2009	14	14	19	16	9	11	11	15	19	24	20	31	25	228	-3.80
*2009-2010	14	14	14	19	16	9	11	11	15	19	24	20	31	217	-4.82
*2010-2011	14	14	14	14	23	15	9	11	11	15	19	24	20	203	-23.40
*2011-2012	14	14	14	14	14	23	15	9	11	11	15	19	24	197	-16.88
*2011-2013	14	14	14	14	14	14	23	15	9	11	11	15	19	187	-17.98



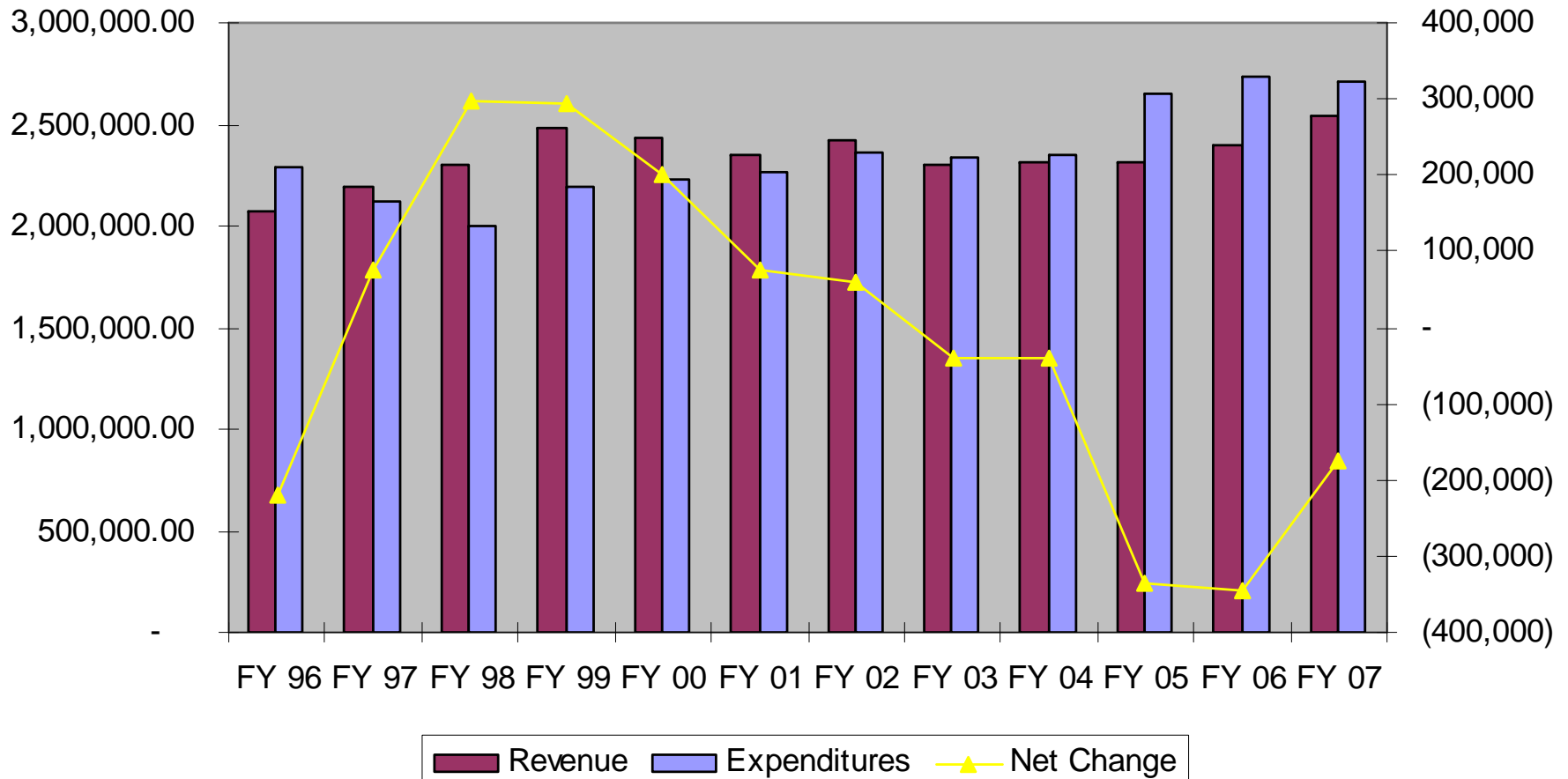
High School Enrollment		
2002-2003		109
2006-2007		103
2007-2008		99
*2008-2009		100
*2009-2010		94
*2010-2011		78
*2011-2012		69

Junior High Enrollment		
2002-2003		51
2006-2007		52
2007-2008		43
*2008-2009		34
*2009-2010		26
*2010-2011		22
*2011-2012		20

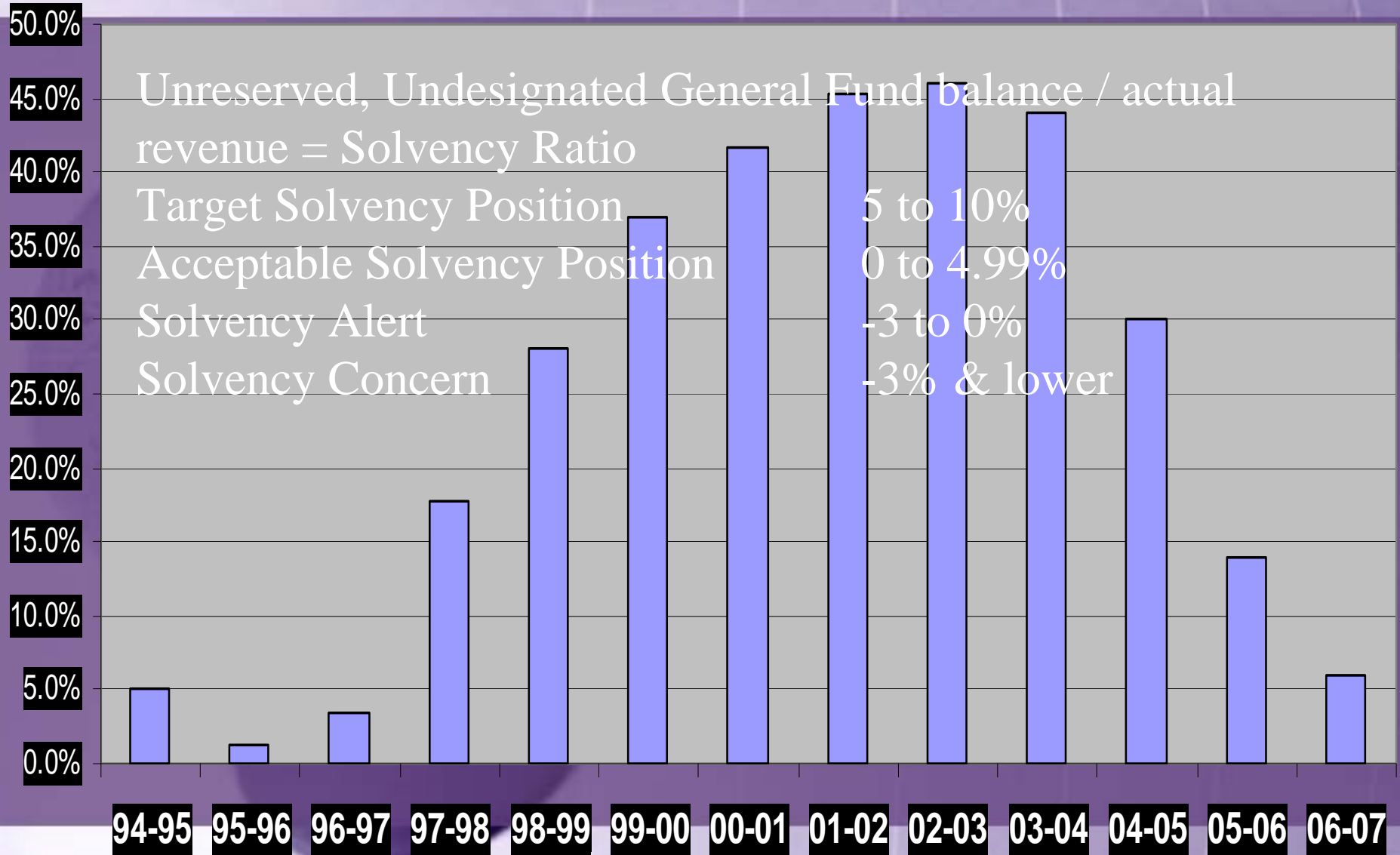
Elementary Enrollment	
2002-2003	135
2006-2007	110
2007-2008	95
*2008-2009	94
*2009-2010	97
*2010-2011	103
*2011-2012	108



Revenues and Expenditures



Solvency Ratio



\$\$\$\$ Questions and Answers

- Is there a million dollars in the bank?
 - No. There is over a million dollars in spending authority which is what the state allows the school to spend. This is not money.
 - As of March 1, there was \$447,052.14 in the general fund. Of this \$125,000 will be used from March through May to finish paying off the ISCAP loan of \$160,000 we borrowed last summer to cover payroll.
 - We only receive money for the general fund from the state in 10 payments. Those payments vary in their amount and must cover the two months that we receive no \$\$\$\$. (summer payroll)

Q+A Continued...

- Can the school use money for payroll that has been saved in the PPEL, Management and Capital Projects funds?
 - No, that is in violation of state code.
- Will the school need to borrow funds this summer?
 - Yes, paperwork is being filled out to use ISCAP funds again this year.

Taxes

Valuation \$91.8 million
54th highest valuation
in 371 school districts.

Year	Tax Rate	Total Resources
• 2004	11.74325	\$2,899,461
• 2005	11.33958	\$2,916,227
• 2006	12.57131	\$3,087,332
• 2007	12.16983	\$3,108,753
• 2008 est.	13.26680	\$3,277,055
• 2009 est.	15.17482	\$3,343,000

Valuation \$73.6 million
136th highest valuation
in 364 school districts.

\$50,000 per pupil decline
of the valuations