

Farragut Board and Community Discussion

April 7, 2008
6:30 p.m.



Community Support – A Strength for our school in the past.

- PTO

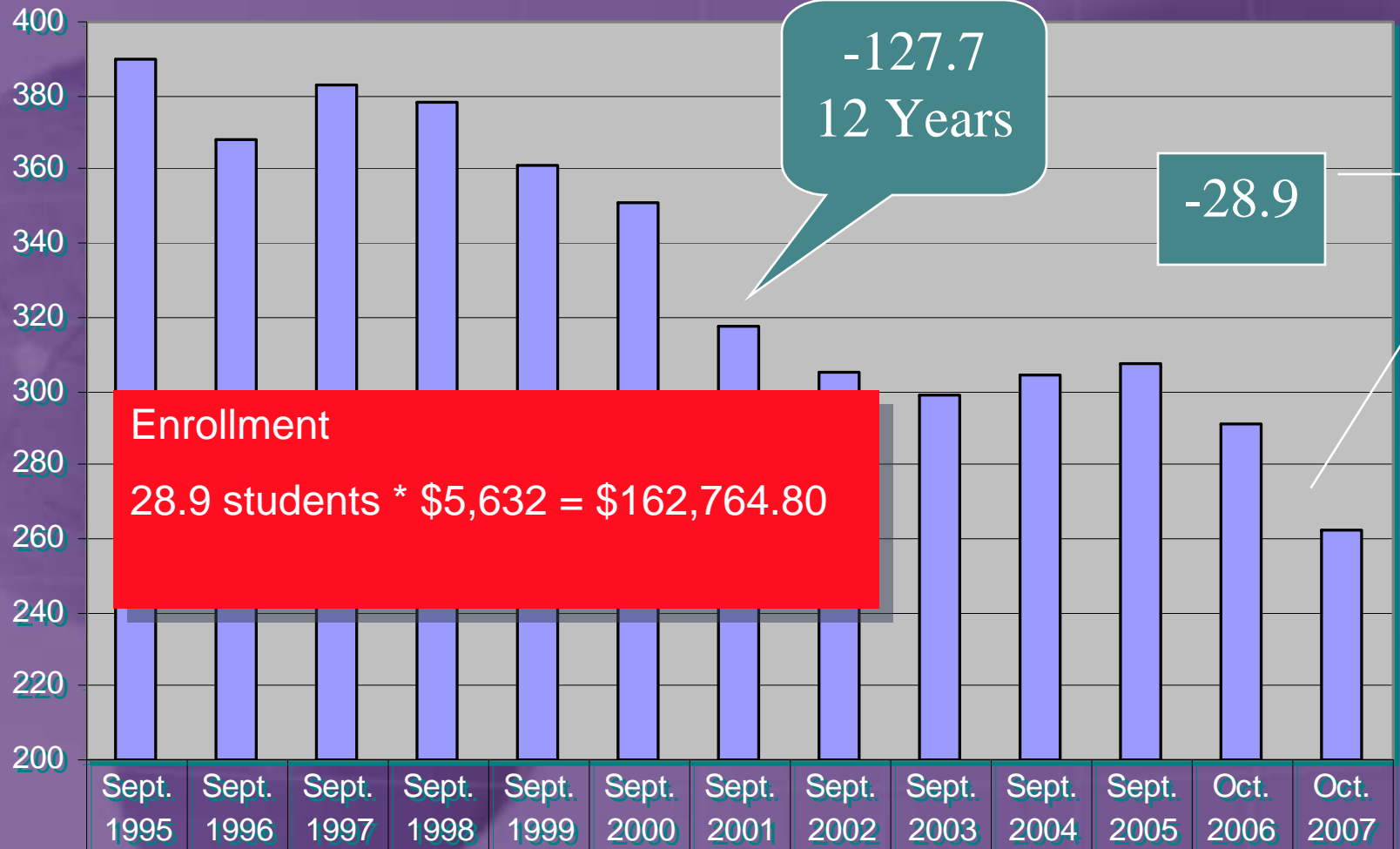
- Provide opportunities for students.
- Assist with programs
- Elementary & High School
- Aid in support for HVAC

- School Improvement Advisory Committee

- Help the board make educational decisions
- Learn what is happening in the school.
- Vocational/Nutritional Programs

Enrollment

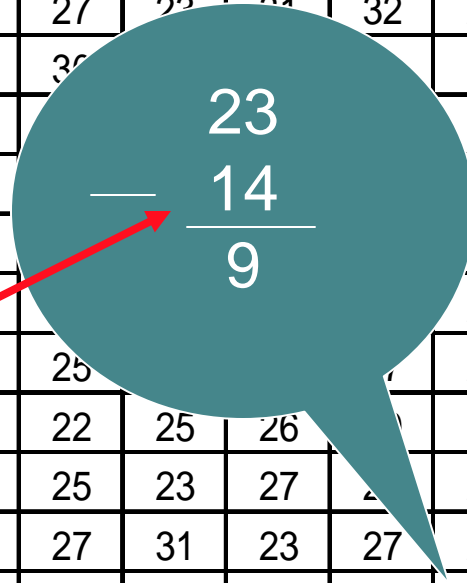
Farragut's Certified Enrollment History



■ Enrollment	390	368	383	378	361	350.7	317.4	305.1	299.1	304.3	307.3	291.2	262.3
--------------	-----	-----	-----	-----	-----	-------	-------	-------	-------	-------	-------	-------	-------

Farragut Enrollment Projections

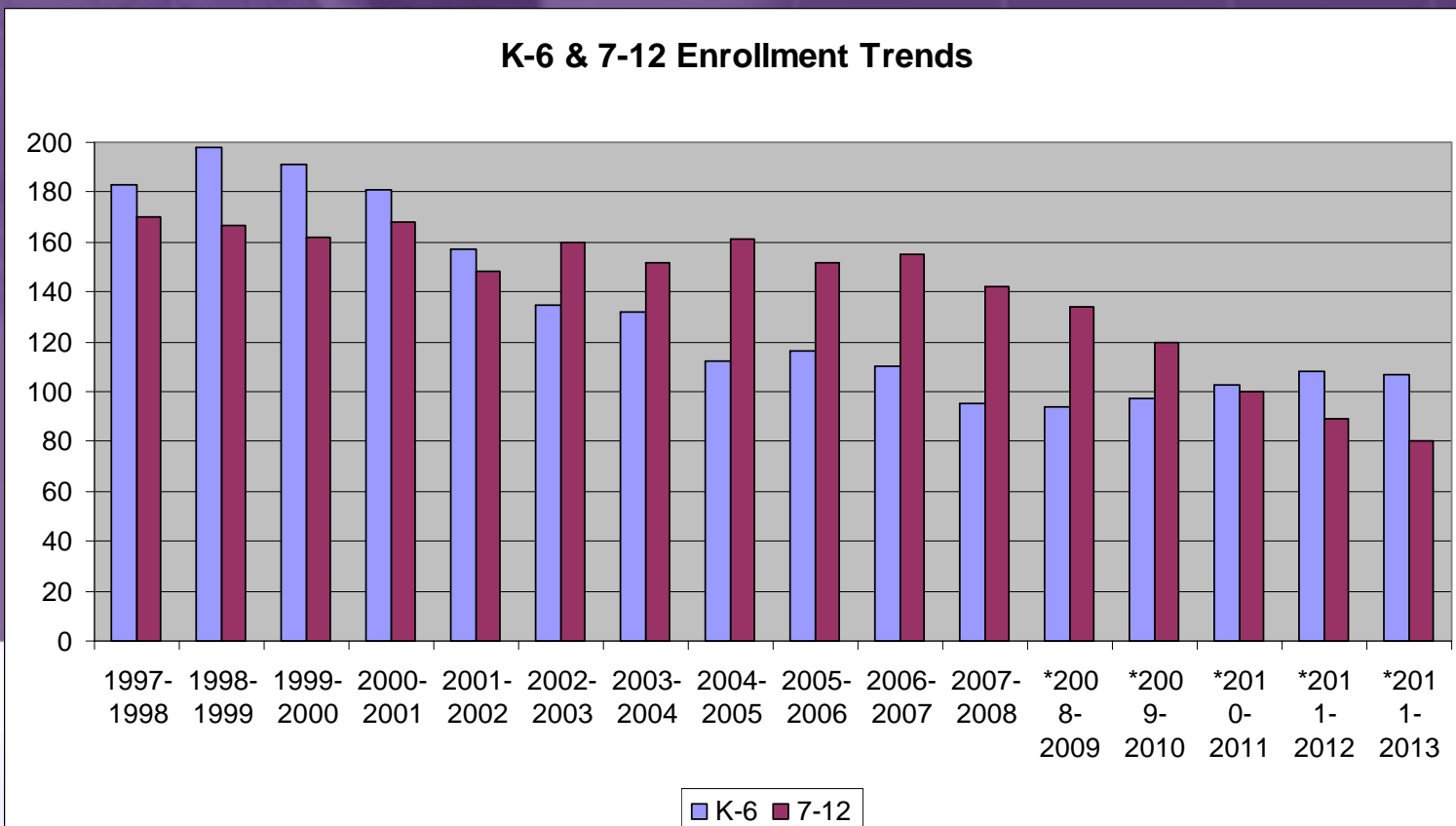
Year	K	1	2	3	4	5	6	7	8	9	10	11	12	K-12	% Loss
1992-1993	27	27	29	33	24	30	34	32	36	22	36	23	31	384	
1993-1994	30	33	30	26	31	24	31	31	28	38	18	33	23	376	-2.08
1994-1995	18	31	29	30	30	32	21	29	31	28	37	18	31	365	-2.93
1995-1996	25	19	30	30	29	32	26	29	26	33	25	36	19	359	-1.64
1996-1997	19	28	20	24	28	25	30	28	24	31	33	28	37	355	-1.11
1997-1998	29	21	30	25	25	29	24	31	27	22	24	32	26	353	-0.56
1998-1999	25	34	19	34	26	29	31	25	36	30	30	36	36	365	3.40
1999-2000	26	23	31	21	31	27	32	29	33	29	33	33	33	353	-3.29
2000-2001	27	24	19	30	23	33	25	34	34	34	34	19	19	346	-1.98
2001-2002	11	26	24	20	26	24	26	25	25	25	25	19	19	305	-11.85
2002-2003	11	10	22	23	20	27	22	25	25	25	25	23	23	295	-3.28
2003-2004	15	12	11	22	22	22	28	22	25	25	25	22	22	284	-3.73
2004-2005	13	11	11	10	24	23	20	27	22	25	26	26	31	273	-3.87
2005-2006	21	17	12	12	11	20	23	24	25	23	27	27	28	268	-1.83
2006-2007	23	15	13	12	13	13	21	25	27	31	23	27	22	265	-1.12
2007-2008	14	19	16	9	11	11	15	19	24	20	31	25	23	237	-10.57
*2008-2009	14	14	19	16	9	11	11	15	19	24	20	31	25	228	-3.80
*2009-2010	14	14	14	19	16	9	11	11	15	19	24	20	31	217	-4.82
*2010-2011	14	14	14	14	23	15	9	11	11	15	19	24	20	203	-23.40
*2011-2012	14	14	14	14	14	23	15	9	11	11	15	19	24	197	-16.88
*2011-2013	14	14	14	14	14	14	23	15	9	11	11	15	19	187	-17.98



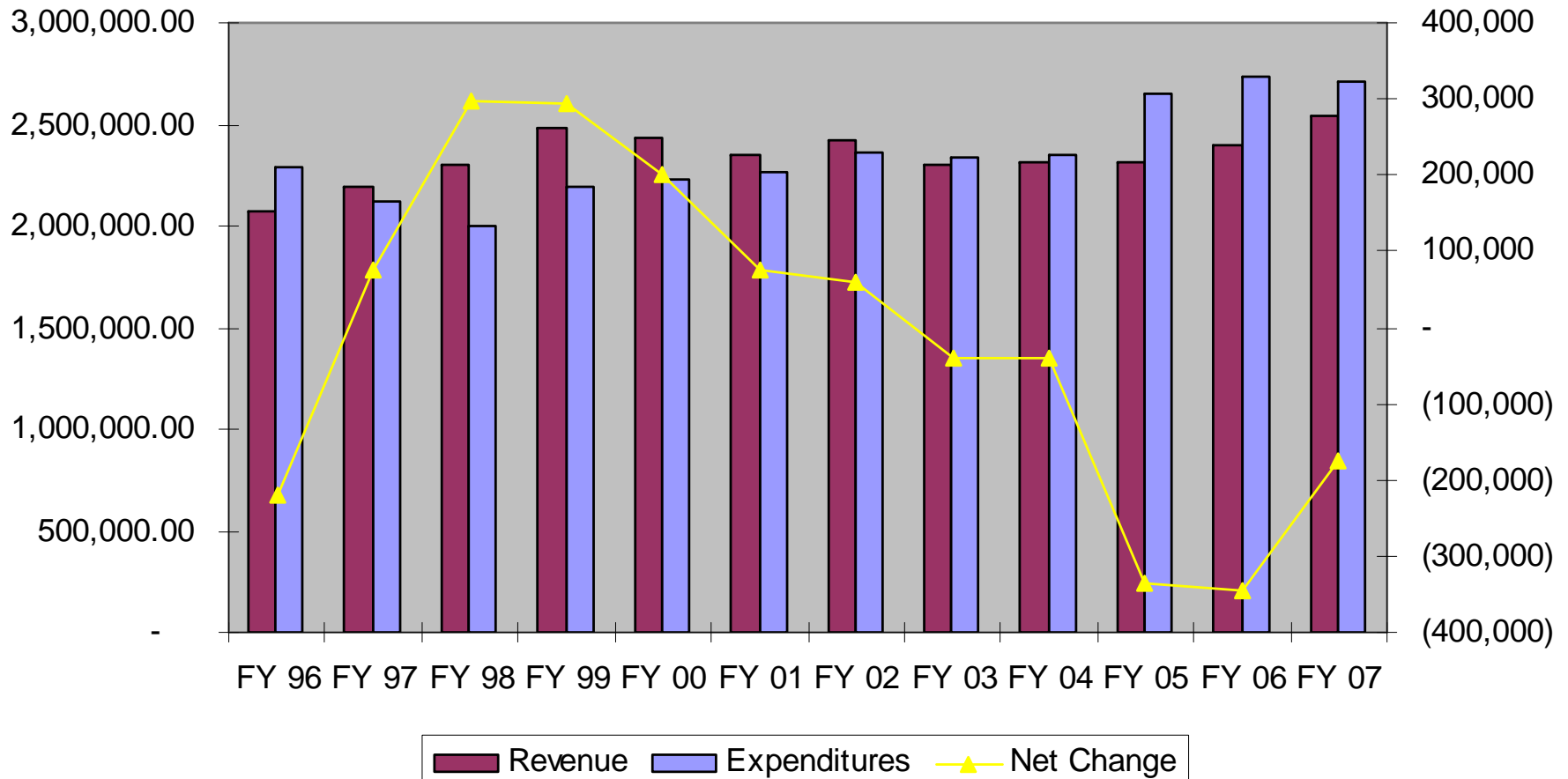
High School Enrollment		
2002-2003		109
2006-2007		103
2007-2008		99
*2008-2009		100
*2009-2010		94
*2010-2011		78
*2011-2012		69

Junior High Enrollment		
2002-2003		51
2006-2007		52
2007-2008		43
*2008-2009		34
*2009-2010		26
*2010-2011		22
*2011-2012		20

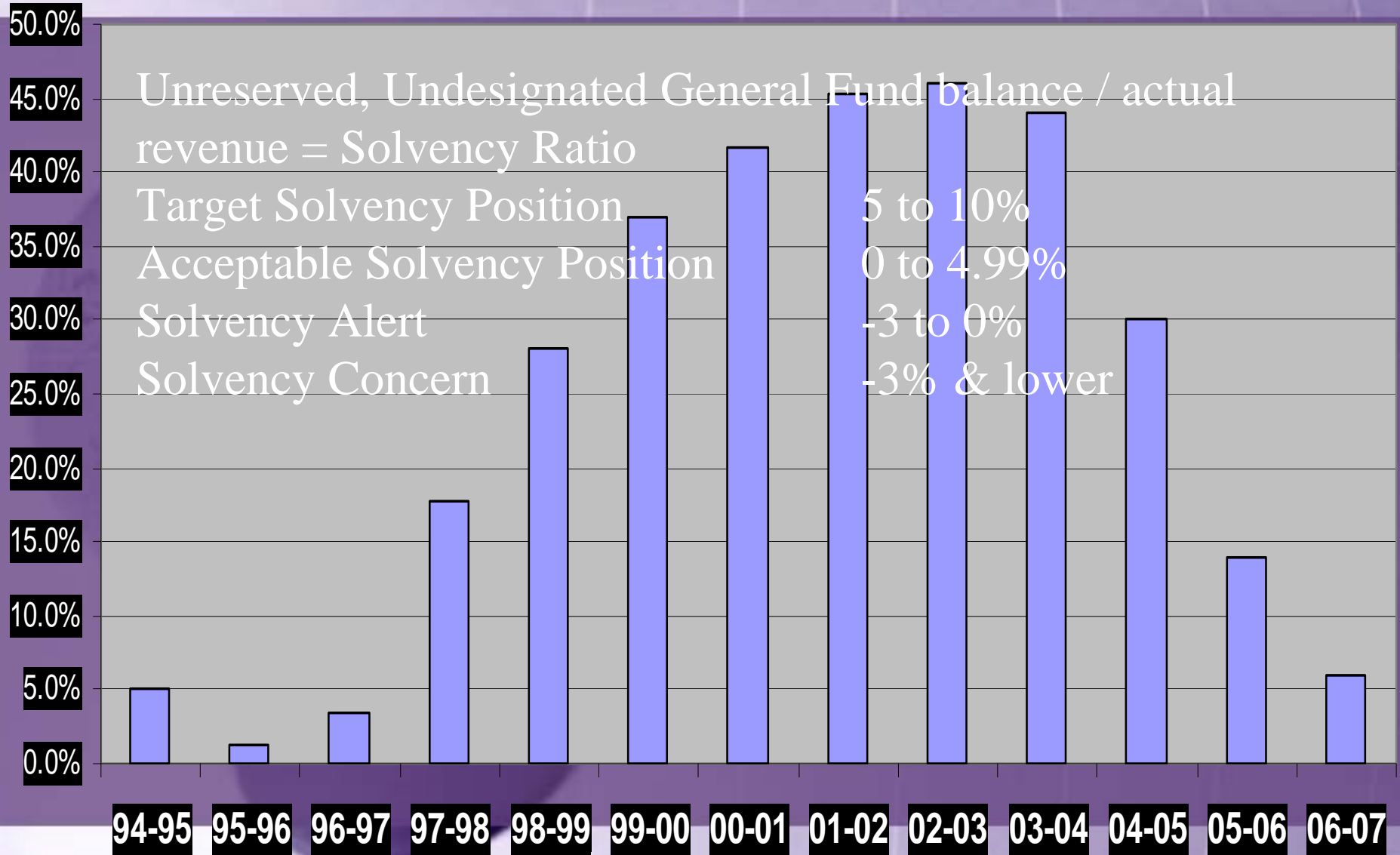
Elementary Enrollment	
2002-2003	135
2006-2007	110
2007-2008	95
*2008-2009	94
*2009-2010	97
*2010-2011	103
*2011-2012	108



Revenues and Expenditures



Solvency Ratio



\$\$\$\$ Questions and Answers

- Is there a million dollars in the bank?
 - No. There is over a million dollars in spending authority which is what the state allows the school to spend. This is not money.
 - As of March 1, there was \$447,052.14 in the general fund. Of this \$125,000 will be used from March through May to finish paying off the ISCAP loan of \$160,000 we borrowed last summer to cover payroll.
 - We only receive money for the general fund from the state in 10 payments. Those payments vary in their amount and must cover the two months that we receive no \$\$\$\$. (summer payroll)

Q+A Continued...

- Can the school use money for payroll that has been saved in the PPEL, Management and Capital Projects funds?
 - No, that is in violation of state code.
- Will the school need to borrow funds this summer?
 - Yes, paperwork is being filled out to use ISCAP funds again this year.

Taxes

Valuation \$91.8 million
54th highest valuation
in 371 school districts.

Year	Tax Rate	Total Resources
• 2004	11.74325	\$2,899,461
• 2005	11.33958	\$2,916,227
• 2006	12.57131	\$3,087,332
• 2007	12.16983	\$3,108,753
• 2008 est.	13.26680	\$3,277,055
• 2009 est.	15.17482	\$3,343,000

Valuation \$73.6 million
136th highest valuation
in 364 school districts.

\$50,000 per pupil decline
of the valuations

Future Expenses

- Teacher Negotiations
- 4.053% TA
- Total Increased Cost: \$50,217.27
- Insurance: \$15,085.32
 - 100/500/1000
- General Fund*
- Staff Pay Increases
 - 07-08 \$22,966
- Insurance
- Heating
- Diesel / Gas
- General Fund*

Short Term Goals

- Take care of the budget shortfall
- Maintain the physical plant
- Continue and expand sharing options with neighboring districts
- Provide high quality vocational programs
- Increase community involvement with our school
- Provide resources for professional development and curriculum

Long Term Goals

- Sustain the school while students are receiving a quality education.
- Improve the physical plant to become more conducive for student learning
- Continue discussions with neighboring schools about whole-grade sharing and consolidation
- Provide an educational presence in Farragut

Board Expectations

- Continue to share students and teachers with neighboring districts
- Share administration when nearby districts have a need
- Continue 5 in 4 program
- Continue high academic expectations
- Continue with Auto-Technology Program
- Continue early childhood programs

Possible Board Actions

- Reduction In Staff
 - 3 FTE General Fund
 - 1 FTE Special Education Funds
 - ½ Custodial & Bus route
- Change Insurance Deductible or Carrier
- Share Administrative, Counselor and Teacher Positions
- Reduce paper/copier costs by not sending home as many announcements.

Possible Board Actions cont.

- Talk with area schools about sharing agriculture and industrial arts.
- Develop a volunteer program.
- Reduce activity and junior high athletic trips.

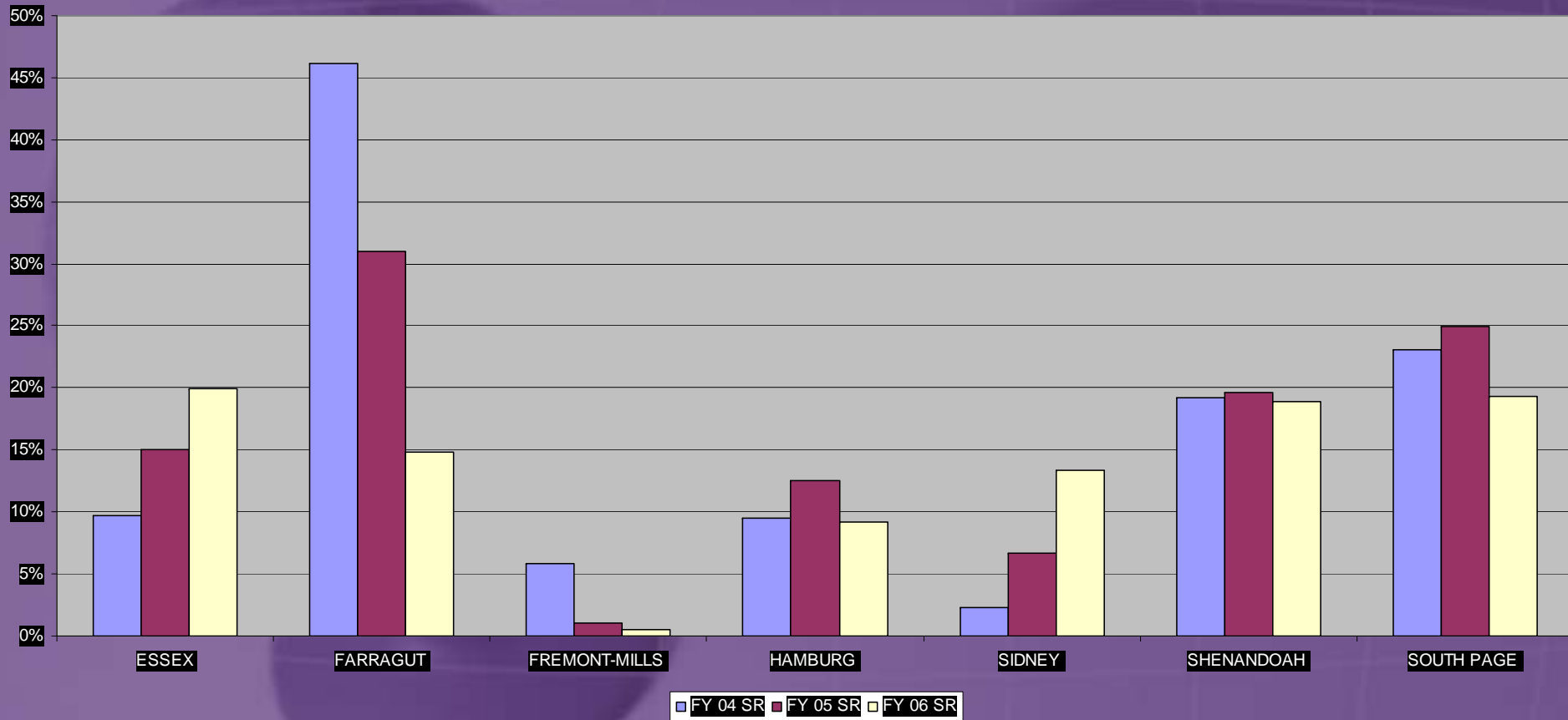
Community Input Q+A

- How many students are open enrolled out?
– 2008-2009

	In	Out
Essex	1	0
Hamburg	0	3
Malvern	1	0
Shenandoah	20	27
Sidney	1	7
South Page	0	1
Total	23	38

How does our Solvency Ratio compare with area schools?

Solvency Ratio FY 04-06



Data is only available for FY 04 - FY 06. Farragut's SR for FY 07 is 6%.