

---

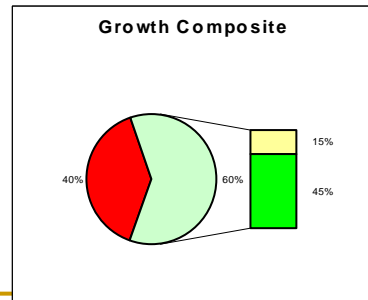
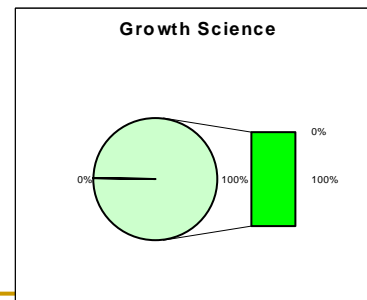
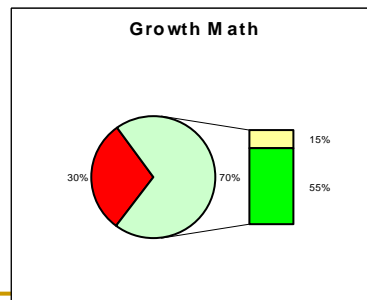
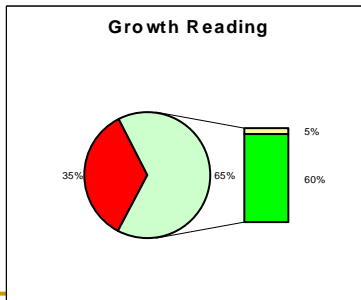
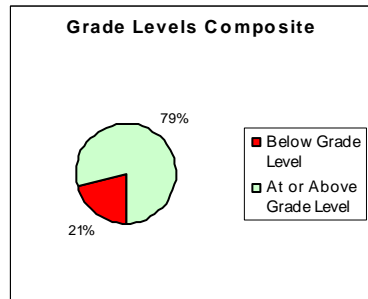
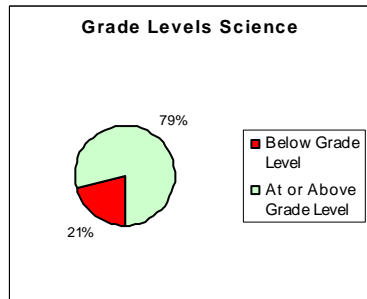
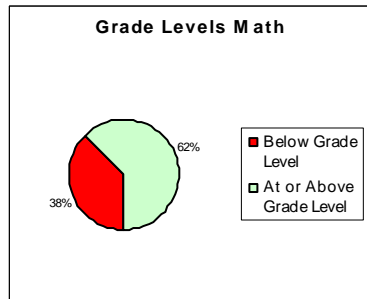
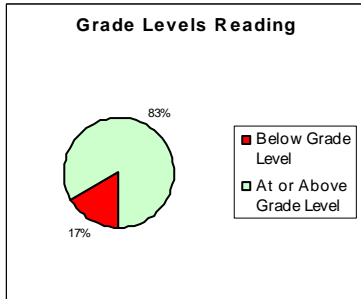
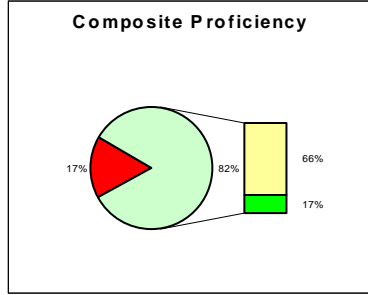
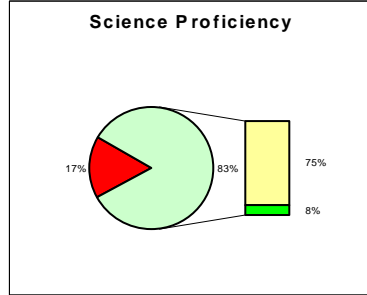
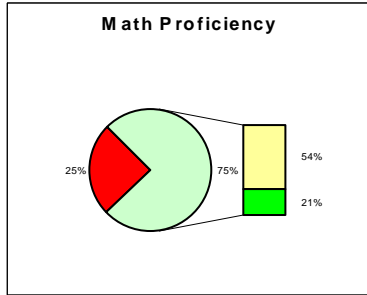
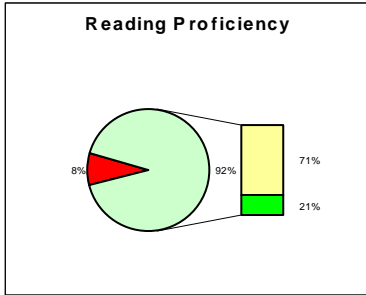
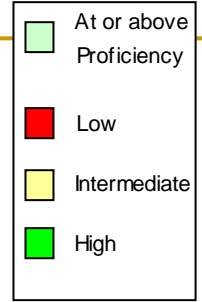
# Eighth Grade – Class of 2010

## ITBS

---

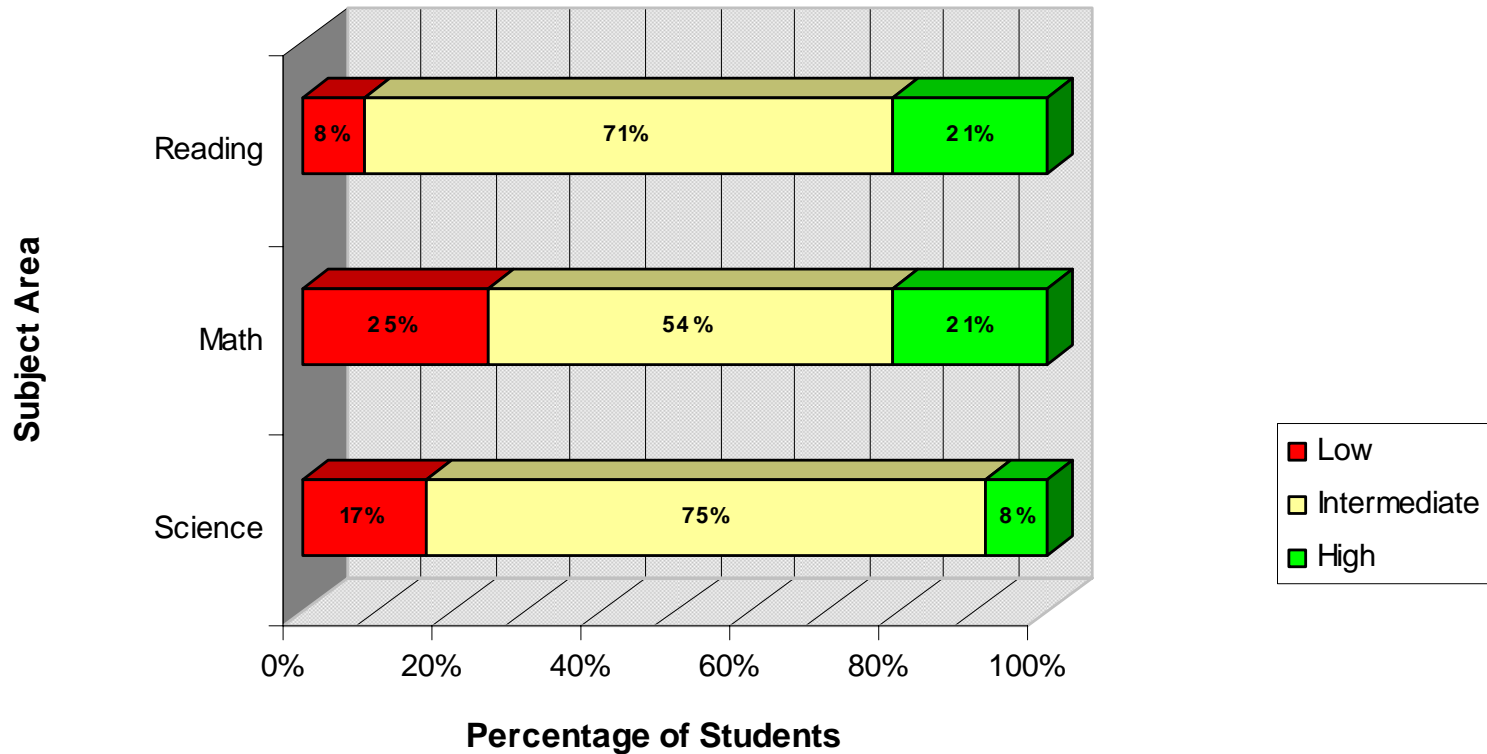
Spring 2006

## Proficiency Level, Grade Level, and Growth Charts in Reading, Math, Science, and Overall Composite



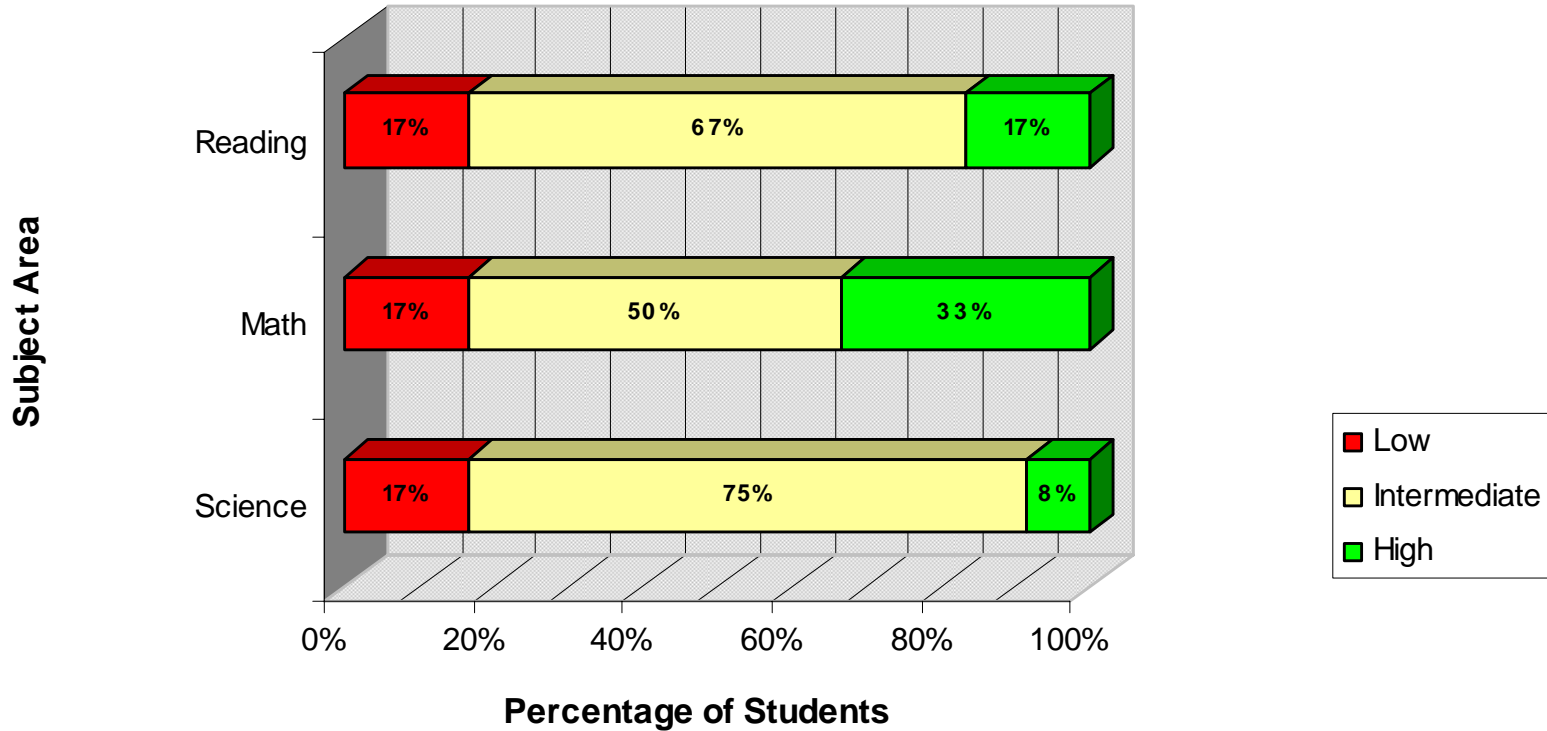
Proficiency, Grade Level, and Growth Charts based upon ITBS Reading Comprehension, Math Total, Science, and Composite Scores and Grade Equivalents

## Proficiency Levels



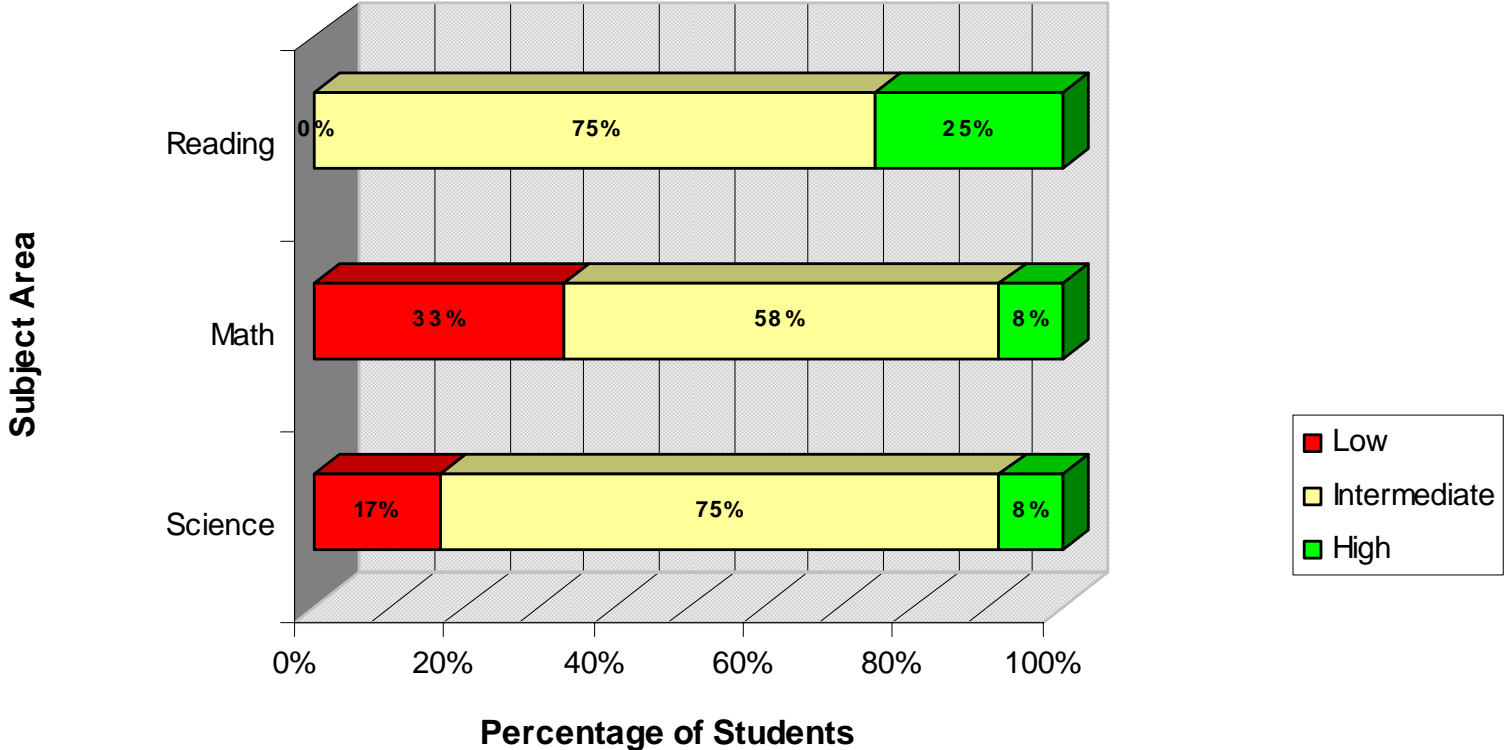
	Science	Math	Reading
■ High	8%	21%	21%
■ Intermediate	75%	54%	71%
■ Low	17%	25%	8%

## Proficiency Levels - Males



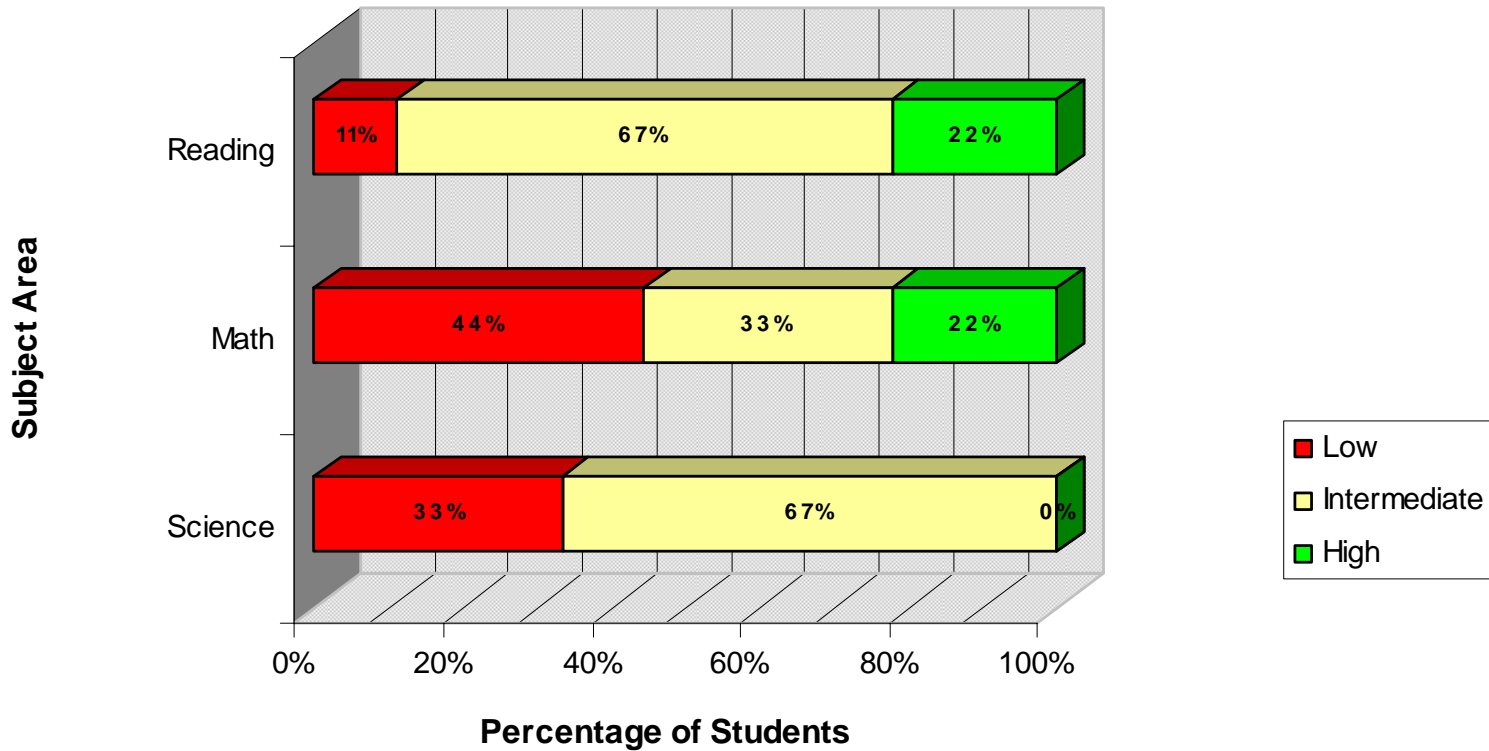
	Science	Math	Reading
High	8%	33%	17%
Intermediate	75%	50%	67%
Low	17%	17%	17%

### Proficiency Levels - Females



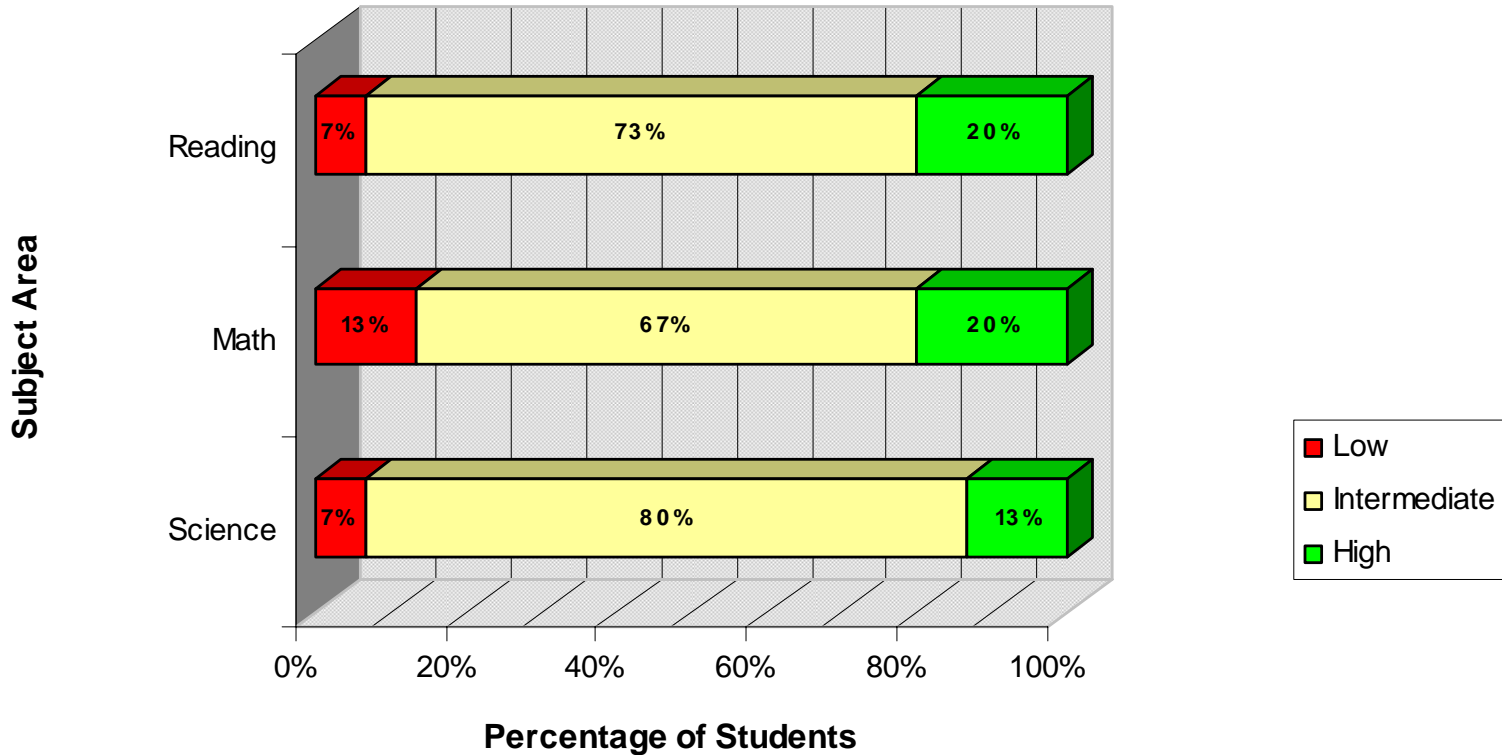
	Science	Math	Reading
High	8%	8%	25%
Intermediate	75%	58%	75%
Low	17%	33%	0%

### Proficiency Levels - Free or Reduced



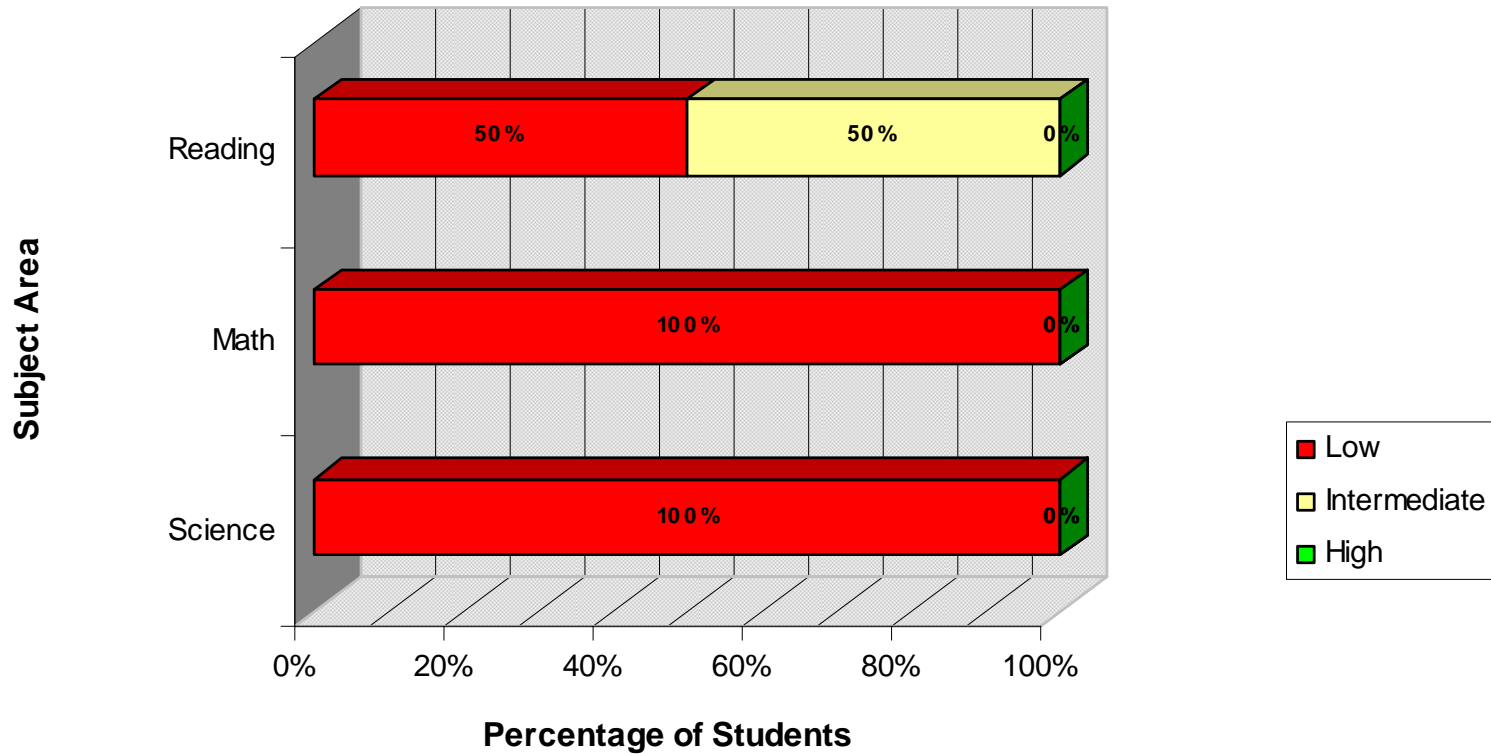
	Science	Math	Reading
■ High	0%	22%	22%
■ Intermediate	67%	33%	67%
■ Low	33%	44%	11%

## Proficiency Levels - Non-Free or Reduced



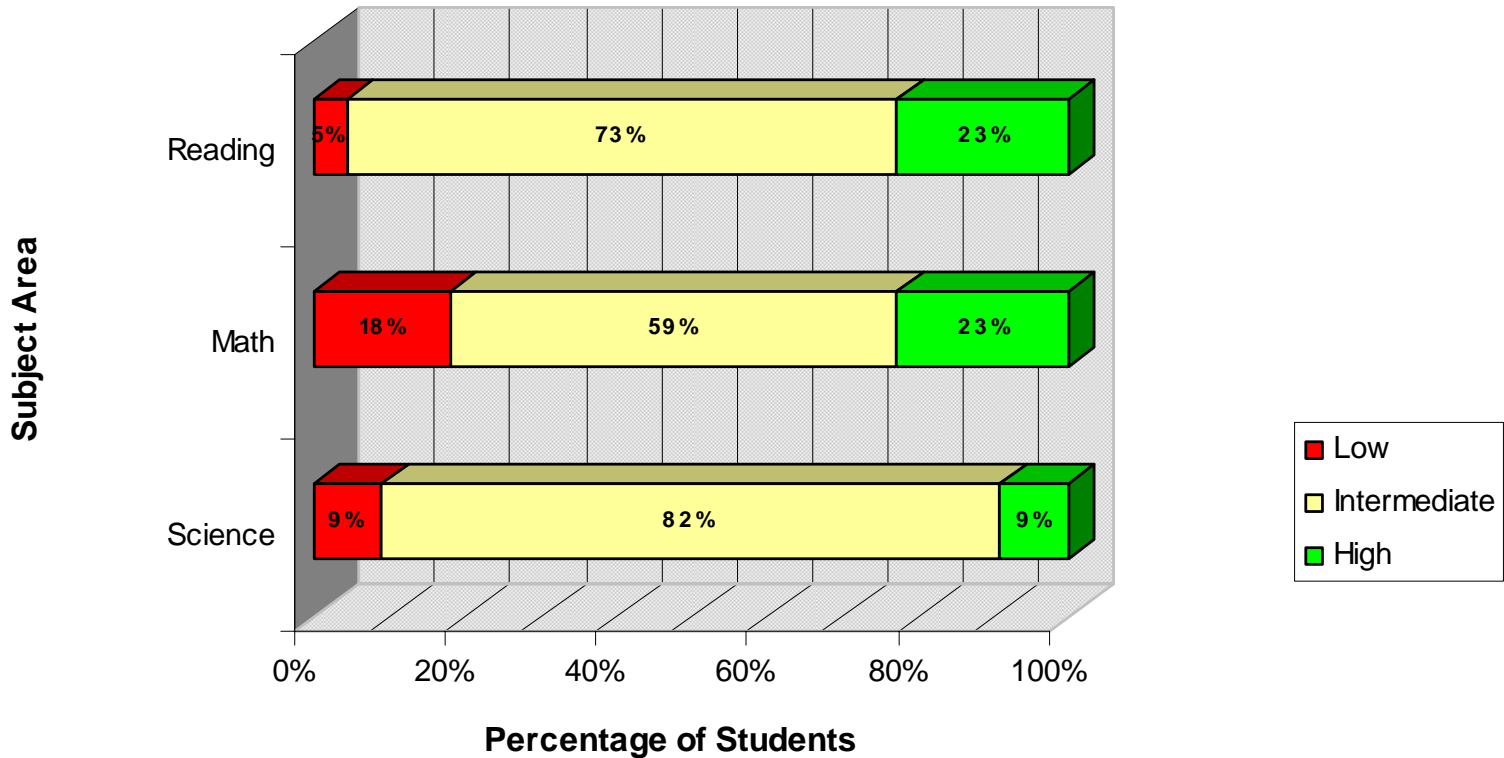
	Science	Math	Reading
High	13%	20%	20%
Intermediate	80%	67%	73%
Low	7%	13%	7%

## Proficiency Levels - IEP



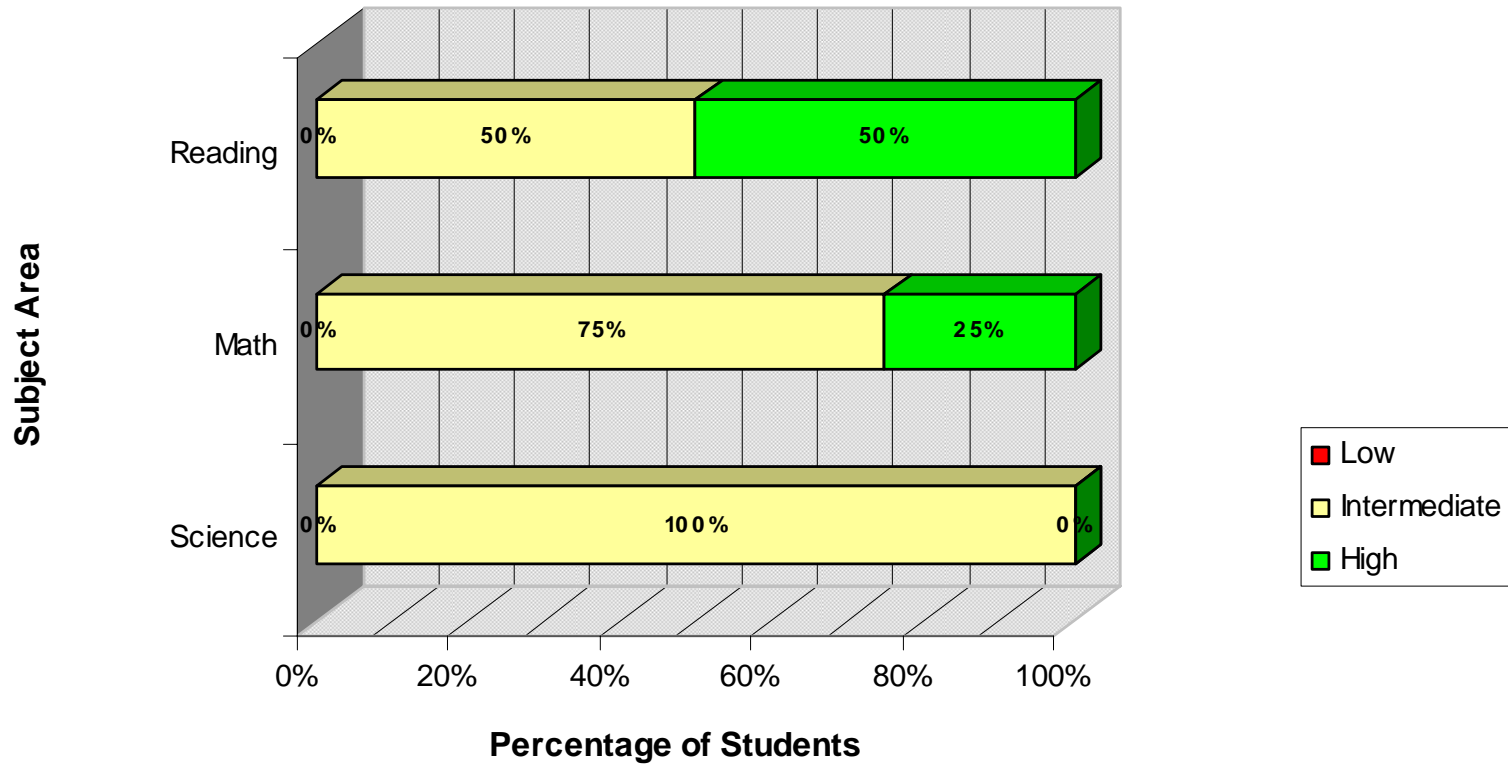
	Science	Math	Reading
High	0%	0%	0%
Intermediate	0%	0%	50%
Low	100%	100%	50%

## Proficiency Levels - Non-IEP



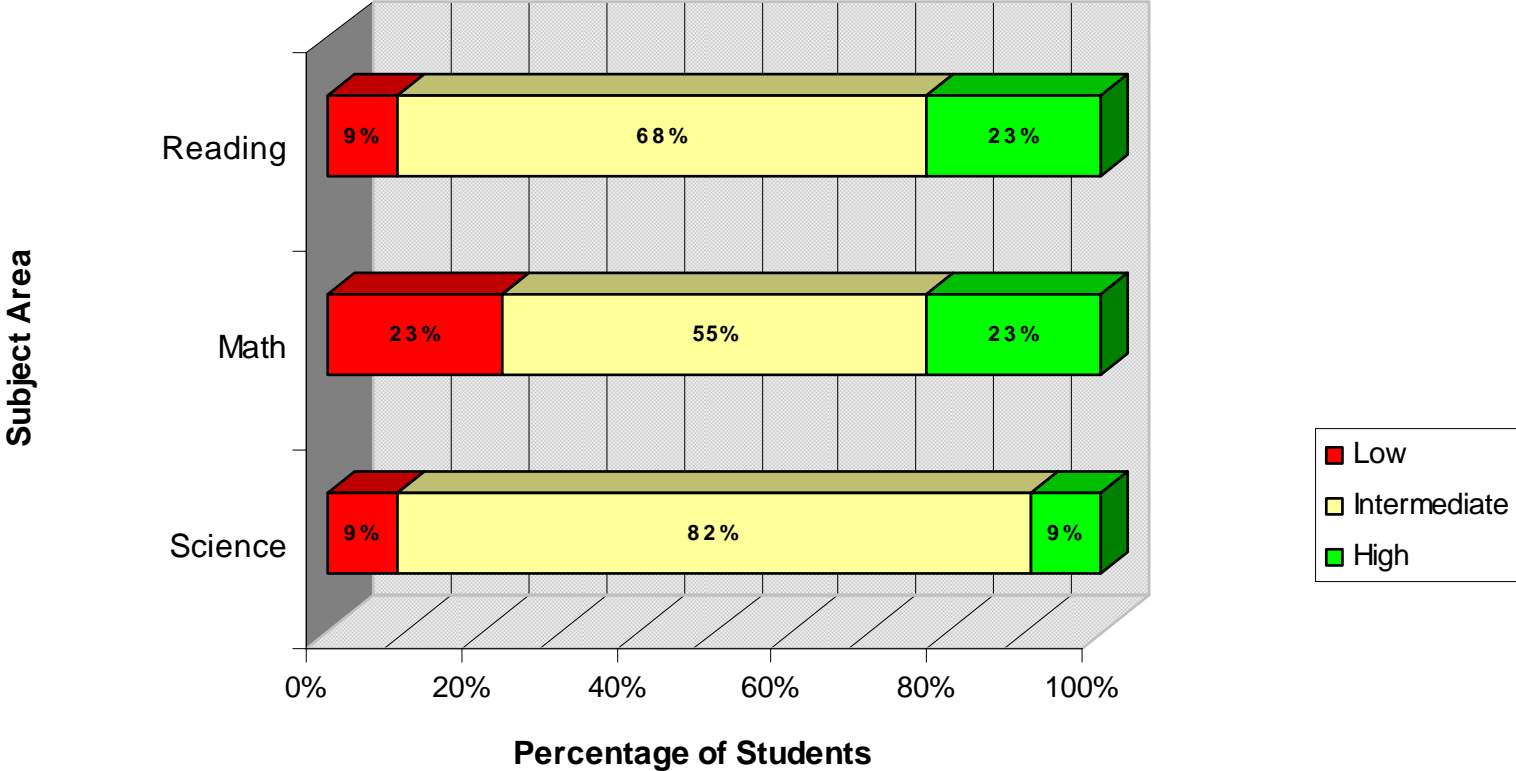
	Science	Math	Reading
■ High	9%	23%	23%
■ Intermediate	82%	59%	73%
■ Low	9%	18%	5%

## Proficiency Levels - Talented and Gifted



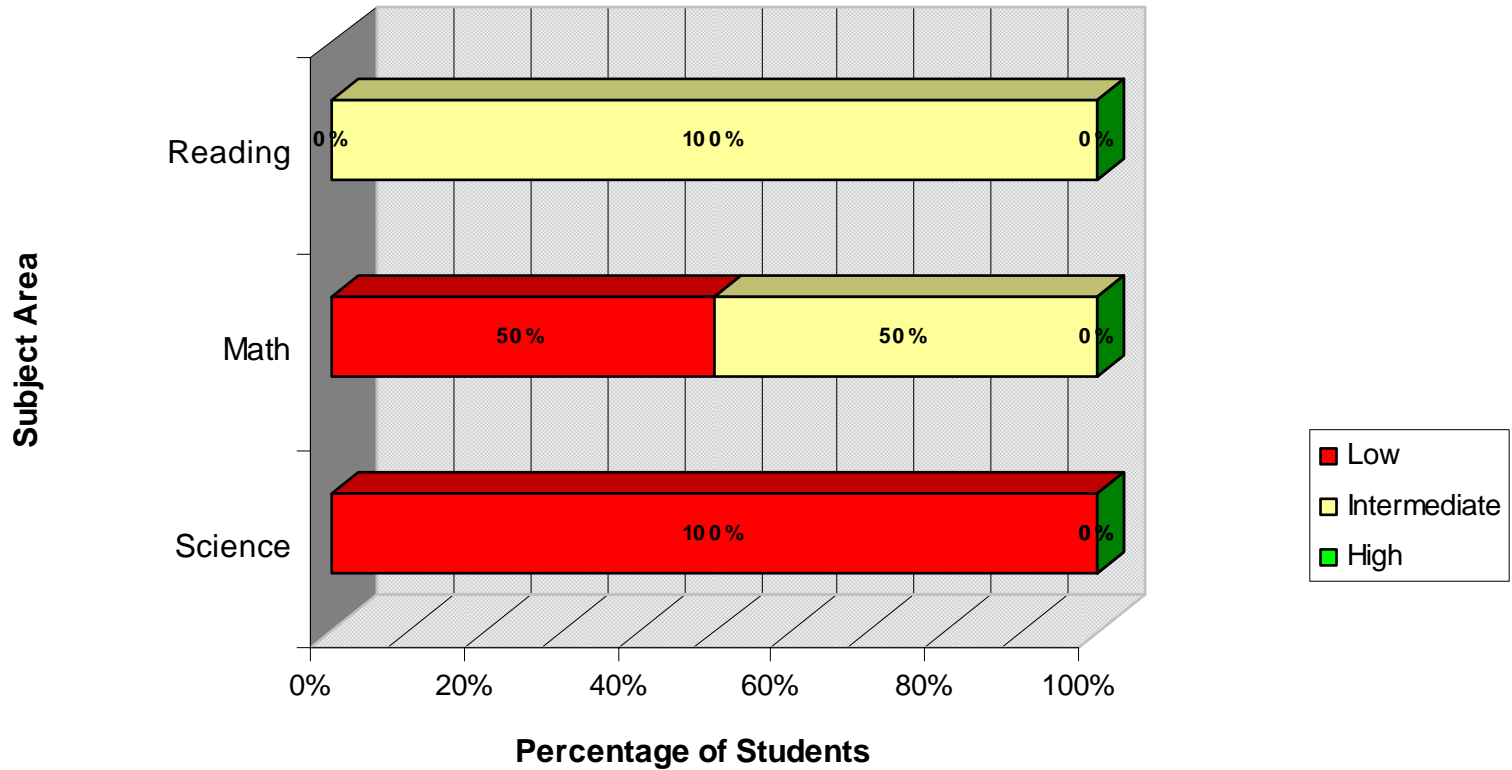
	Science	Math	Reading
High	0%	25%	50%
Intermediate	100%	75%	50%
Low	0%	0%	0%

### Proficiency Levels - Full Academic Year



	Science	Math	Reading
High	9%	23%	23%
Intermediate	82%	55%	68%
Low	9%	23%	9%

## Proficiency Levels - Non Full Academic Year



	Science	Math	Reading
High	0%	0%	0%
Intermediate	0%	50%	100%
Low	100%	50%	0%

**CURRICULUM ANALYSIS OF READING, MATH AND SCIENCE BASED UPON WAHLSTROM METHOD**

<b>N = 24</b>		<b>Students BELOW Proficiency on ITBS COMPOSITE</b>				<b>Students AT OR ABOVE Proficiency on ITBS COMPOSITE</b>			
Total below proficiency = 4		Students at 0-40 NPR				Students at 41-99 NPR			
Total at or above proficiency = 20		<b>Reporting Category Proficiencies</b>							
		Weakness		Strength		Weakness		Strength	
		0-40		41-99		0-40		41-99	
<b>Reporting Categories</b>	Mean NPR	#	%	#	%	#	%	#	%
Reading Comprehension	74%	1	25%	3	75%	1	5%	19	<b>95%</b>
Math Total	68%	3	75%	1	25%	3	15%	17	<b>85%</b>
Science	68%	3	75%	1	25%	1	5%	19	<b>95%</b>