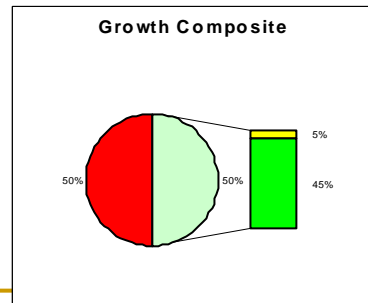
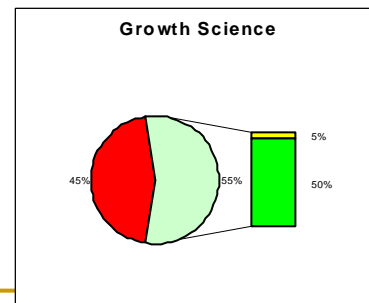
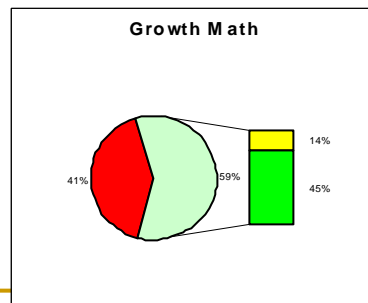
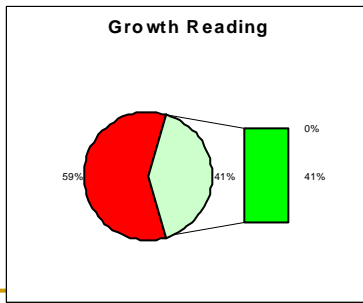
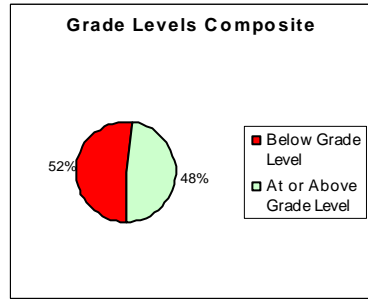
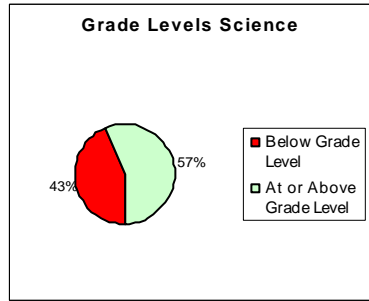
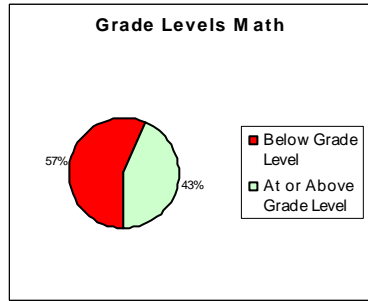
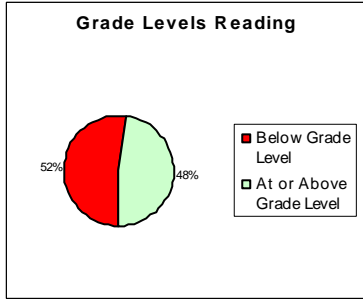
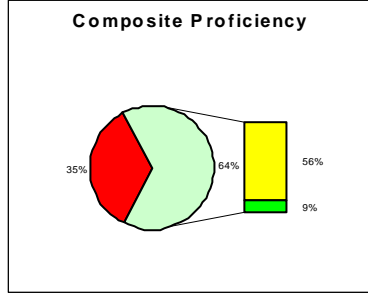
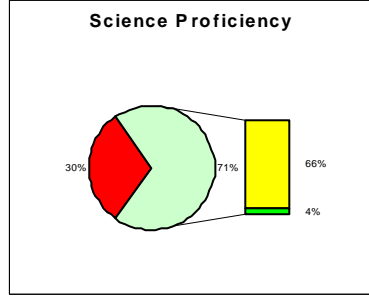
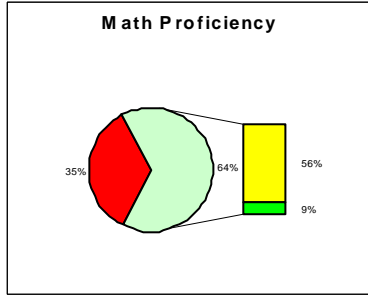
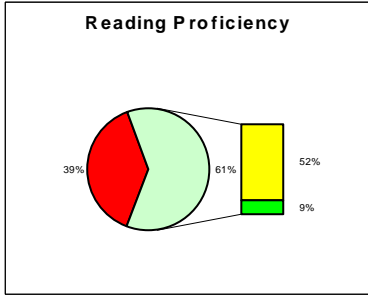
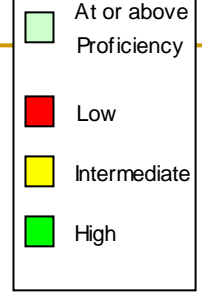

Ninth Grade – Class of 2009

ITED

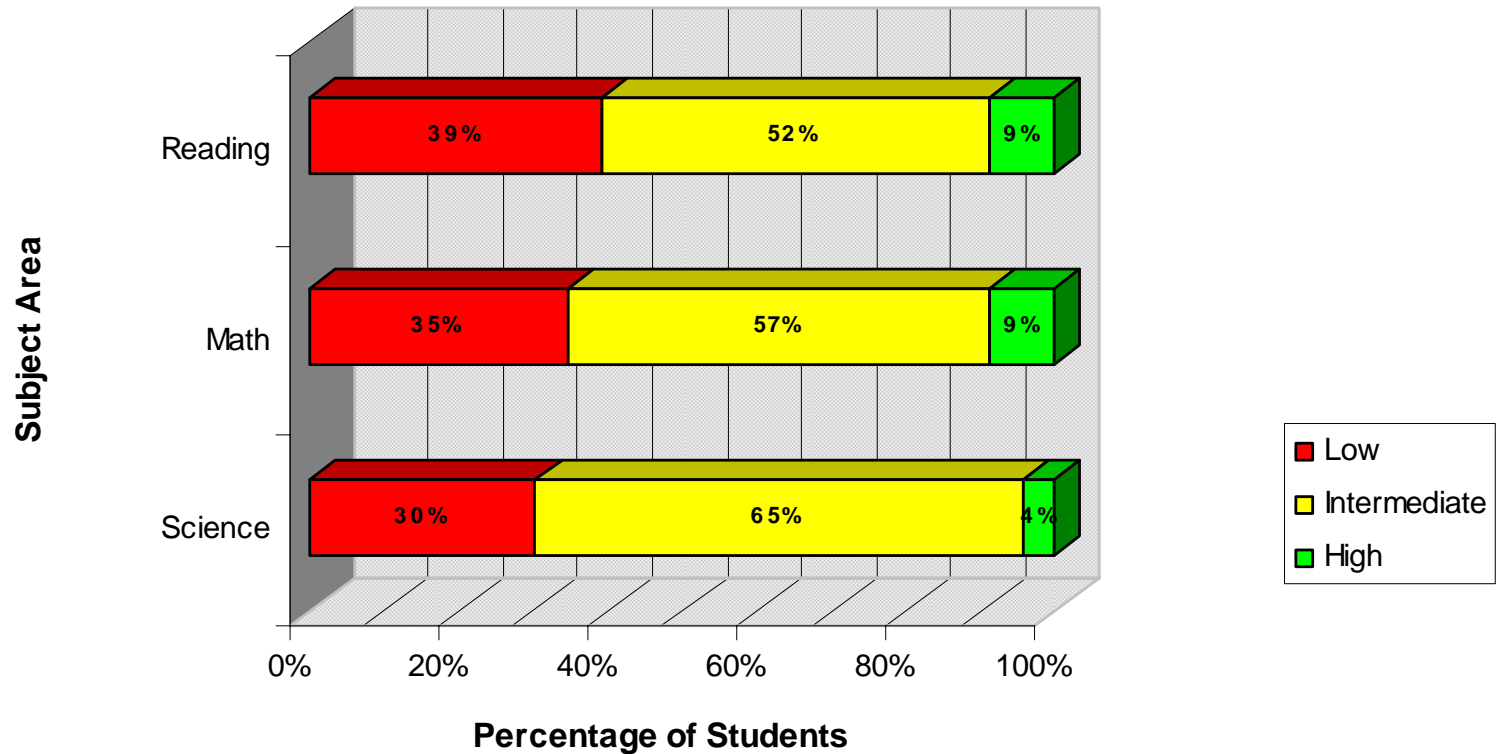
Spring 2006

Proficiency Level, Grade Level, and Growth Charts in Reading, Math, Science, and Overall Composite



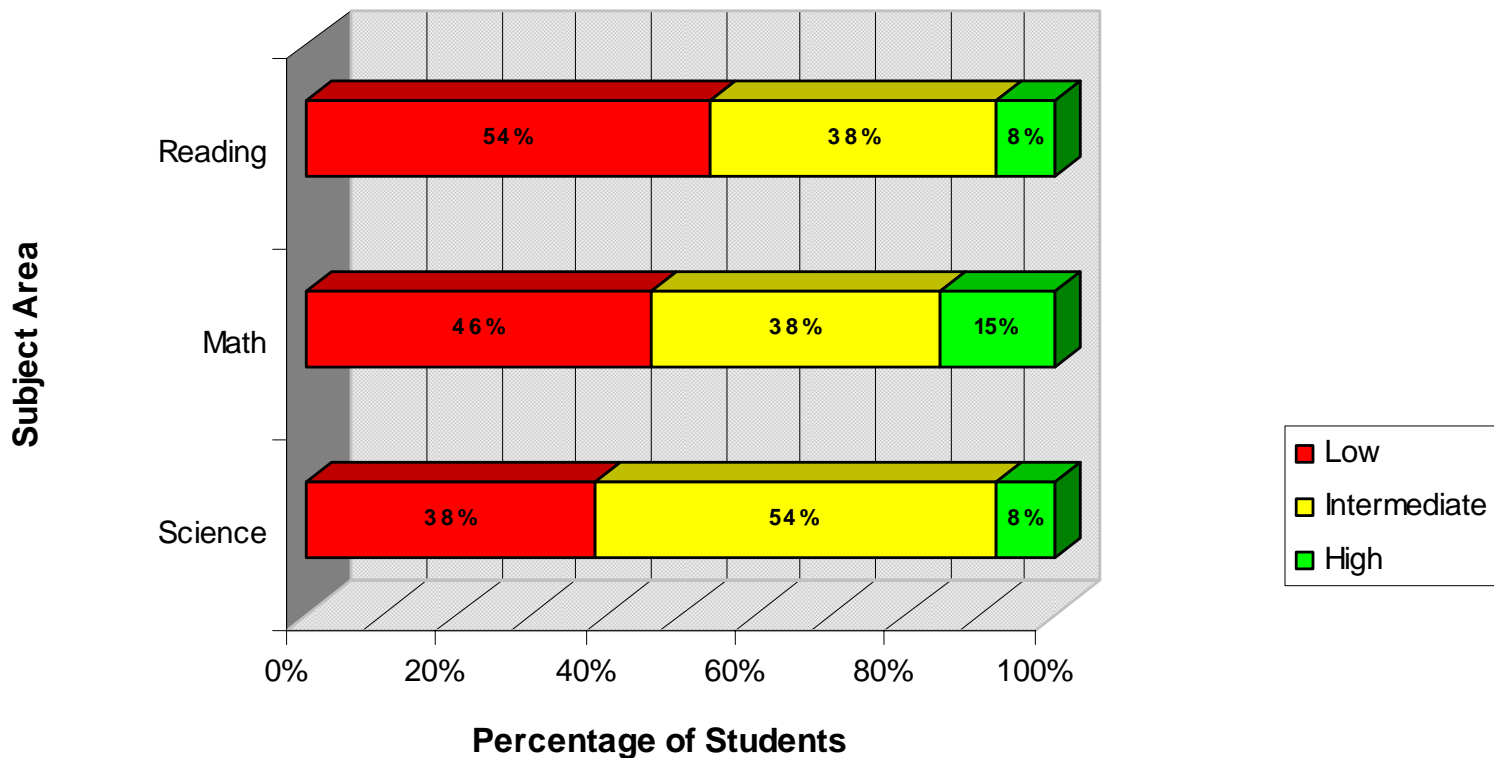
Proficiency, Grade Level, and Growth Charts based upon ITED Reading Comprehension, Math Concepts and Problem Solving, Science, and Composite Scores and Grade Equivalents

Proficiency Levels



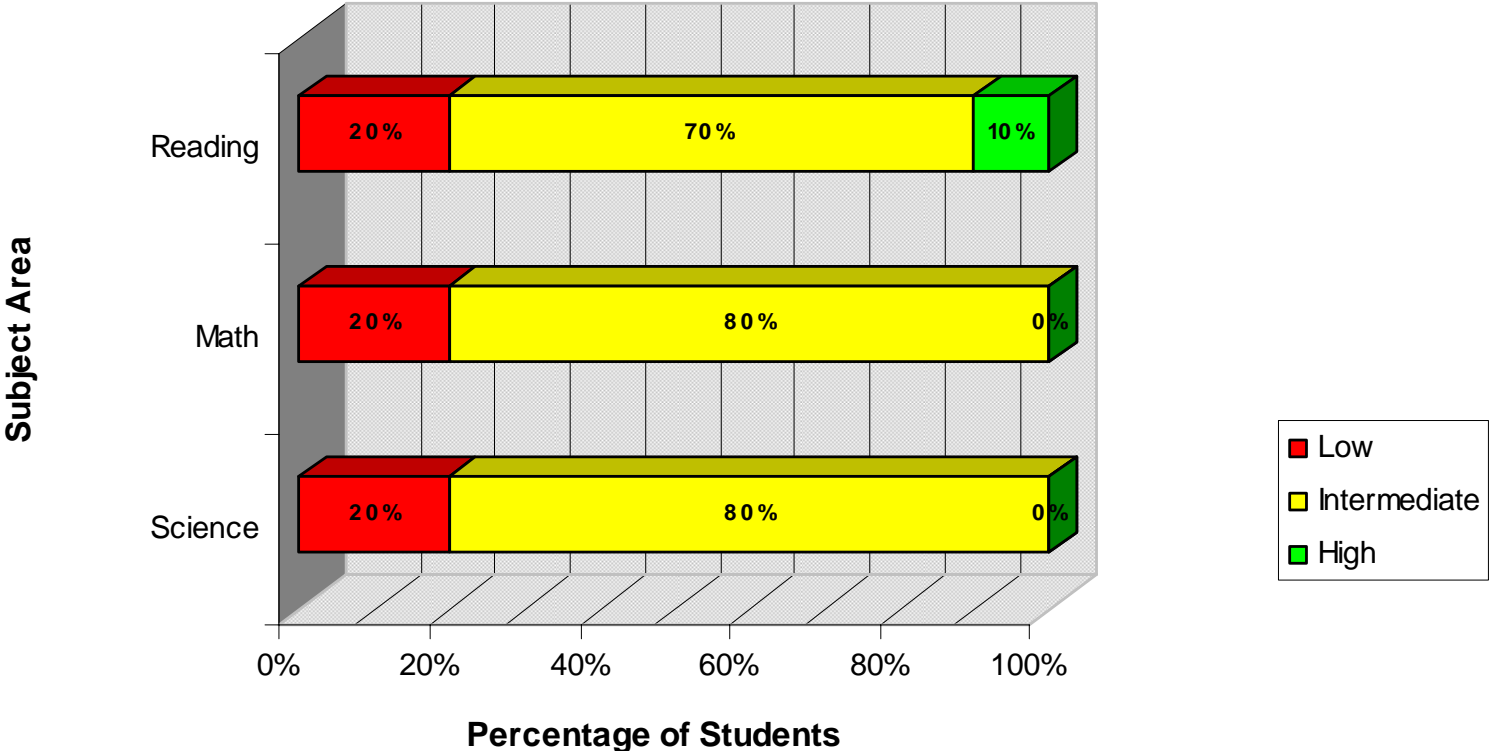
	Science	Math	Reading
■ High	4%	9%	9%
■ Intermediate	65%	57%	52%
■ Low	30%	35%	39%

Proficiency Levels - Males



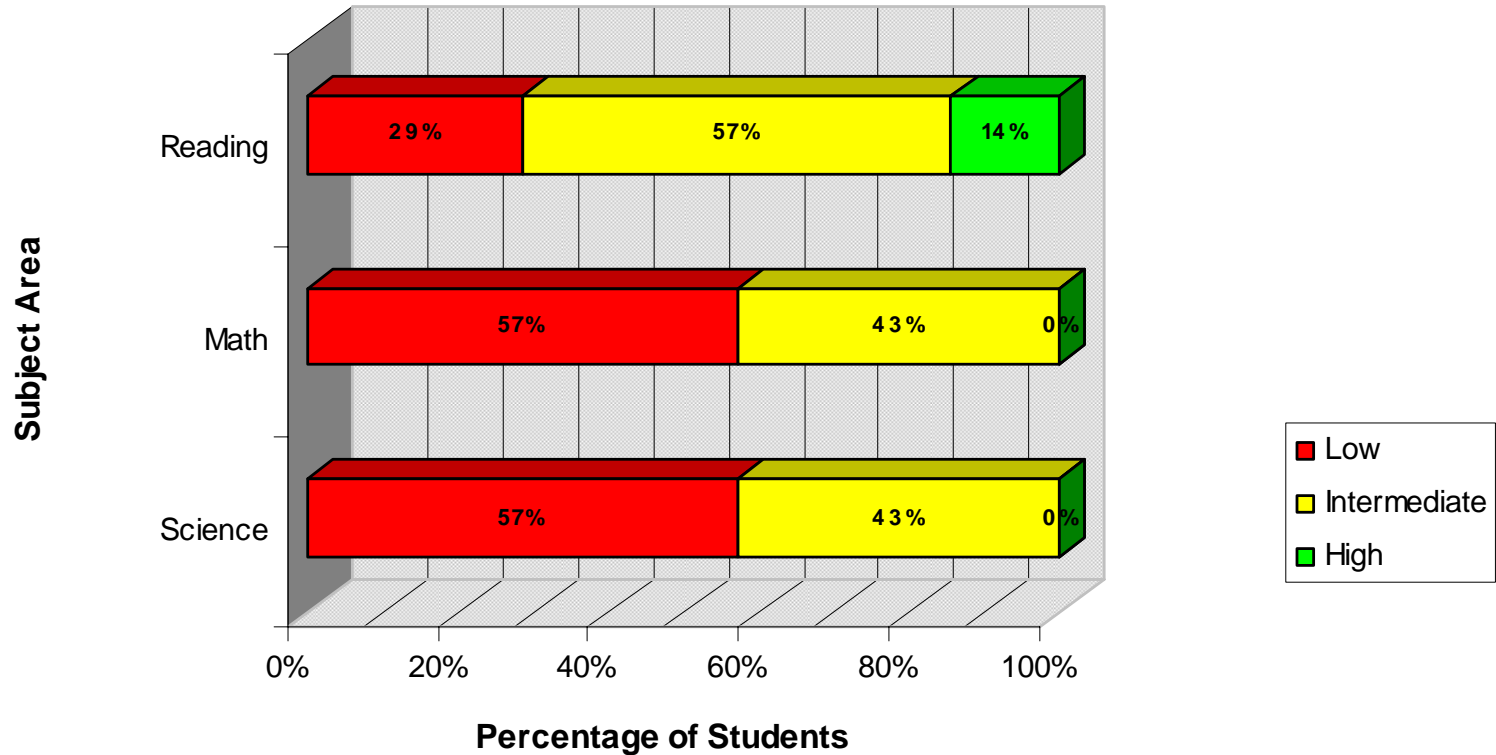
	Science	Math	Reading
High	8%	15%	8%
Intermediate	54%	38%	38%
Low	38%	46%	54%

Proficiency Levels - Females



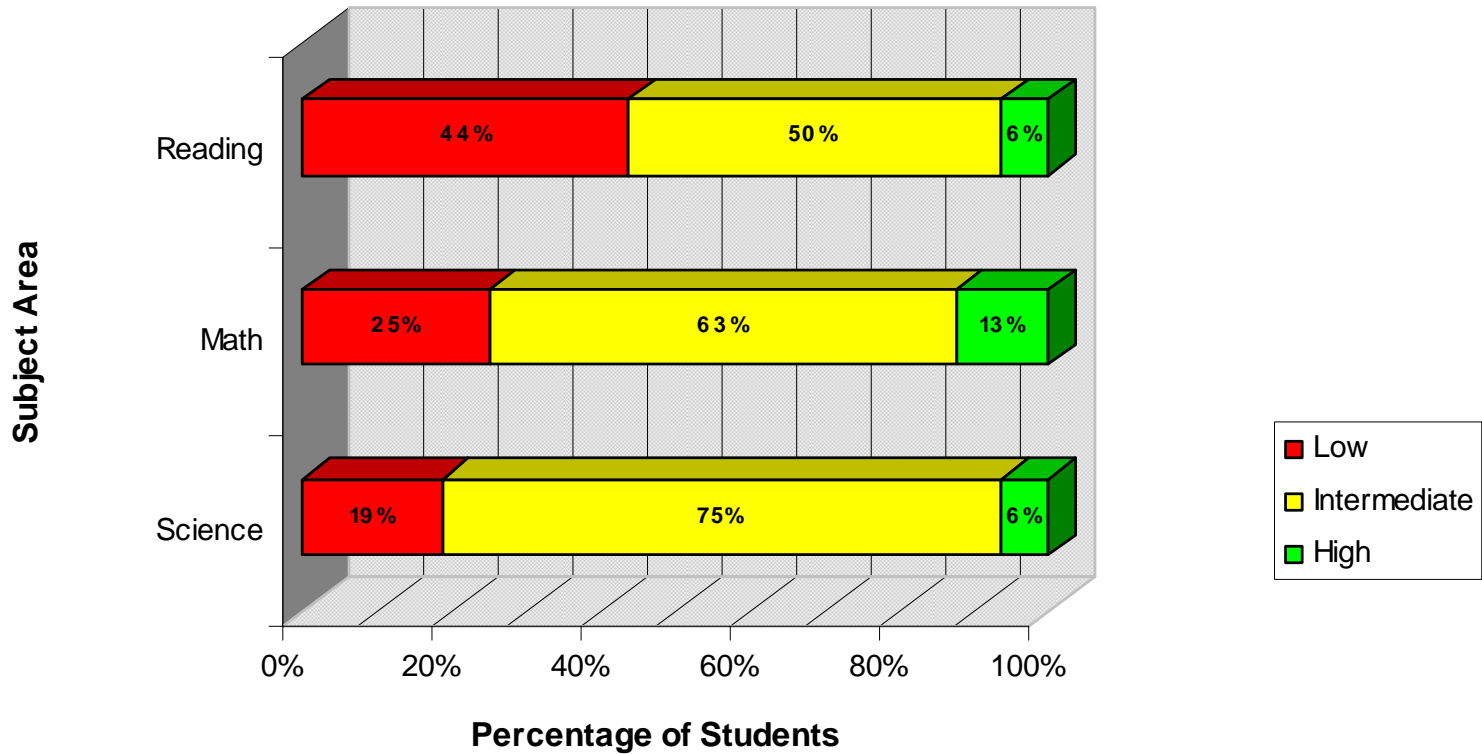
	Science	Math	Reading
High	0%	0%	10%
Intermediate	80%	80%	70%
Low	20%	20%	20%

Proficiency Levels - Free or Reduced



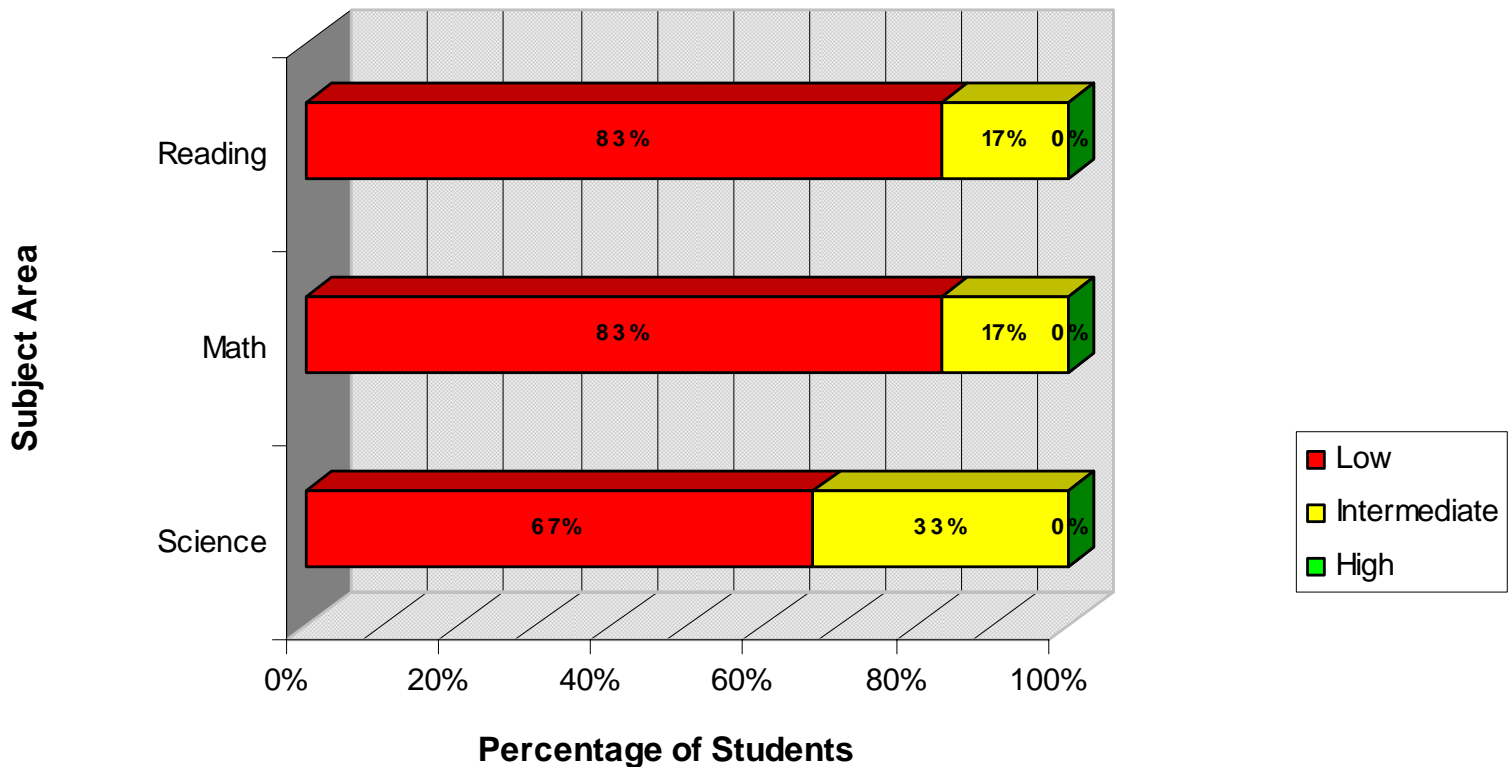
	Science	Math	Reading
High	0%	0%	14%
Intermediate	43%	43%	57%
Low	57%	57%	29%

Proficiency Levels - Non-Free or Reduced



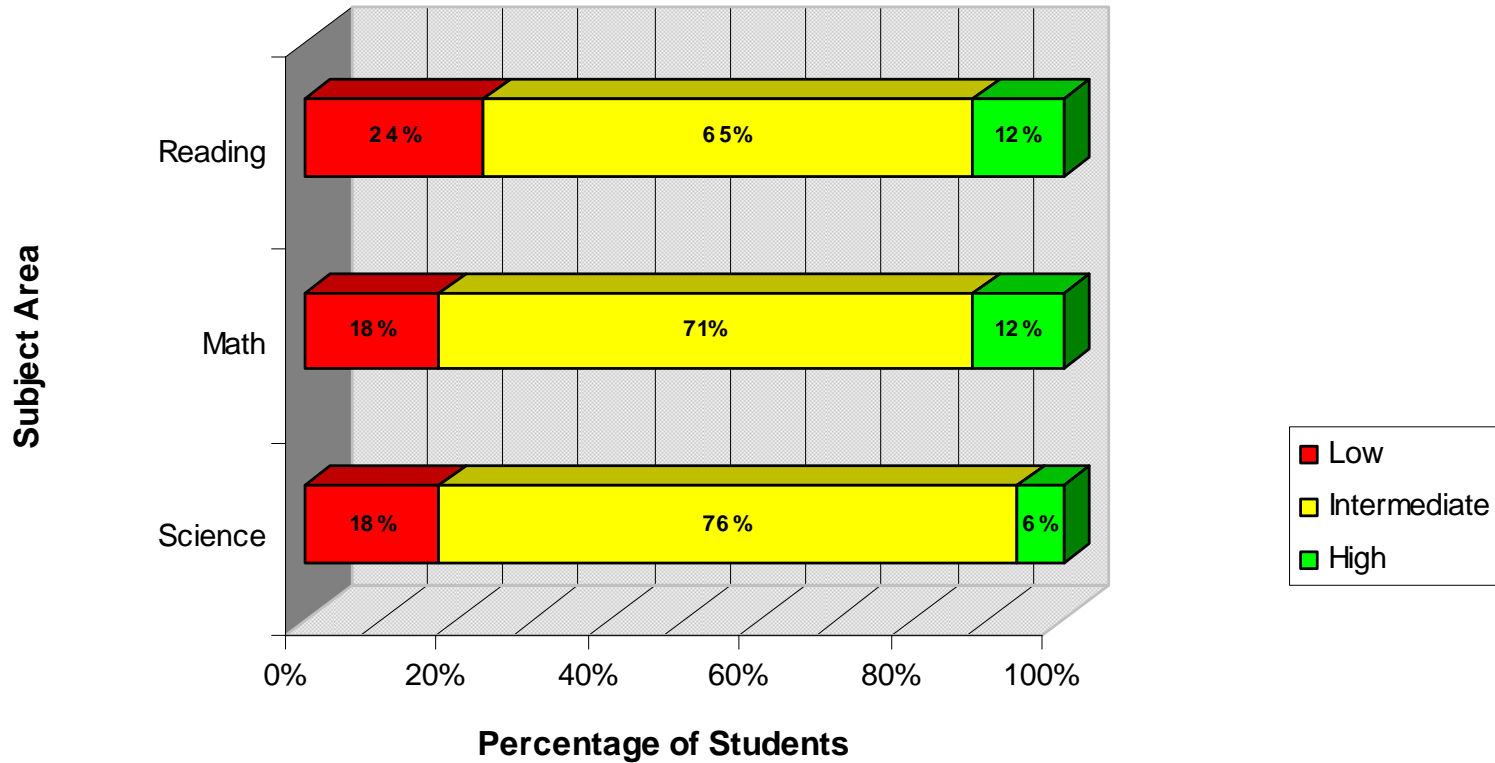
	Science	Math	Reading
High	6%	13%	6%
Intermediate	75%	63%	50%
Low	19%	25%	44%

Proficiency Levels - IEP



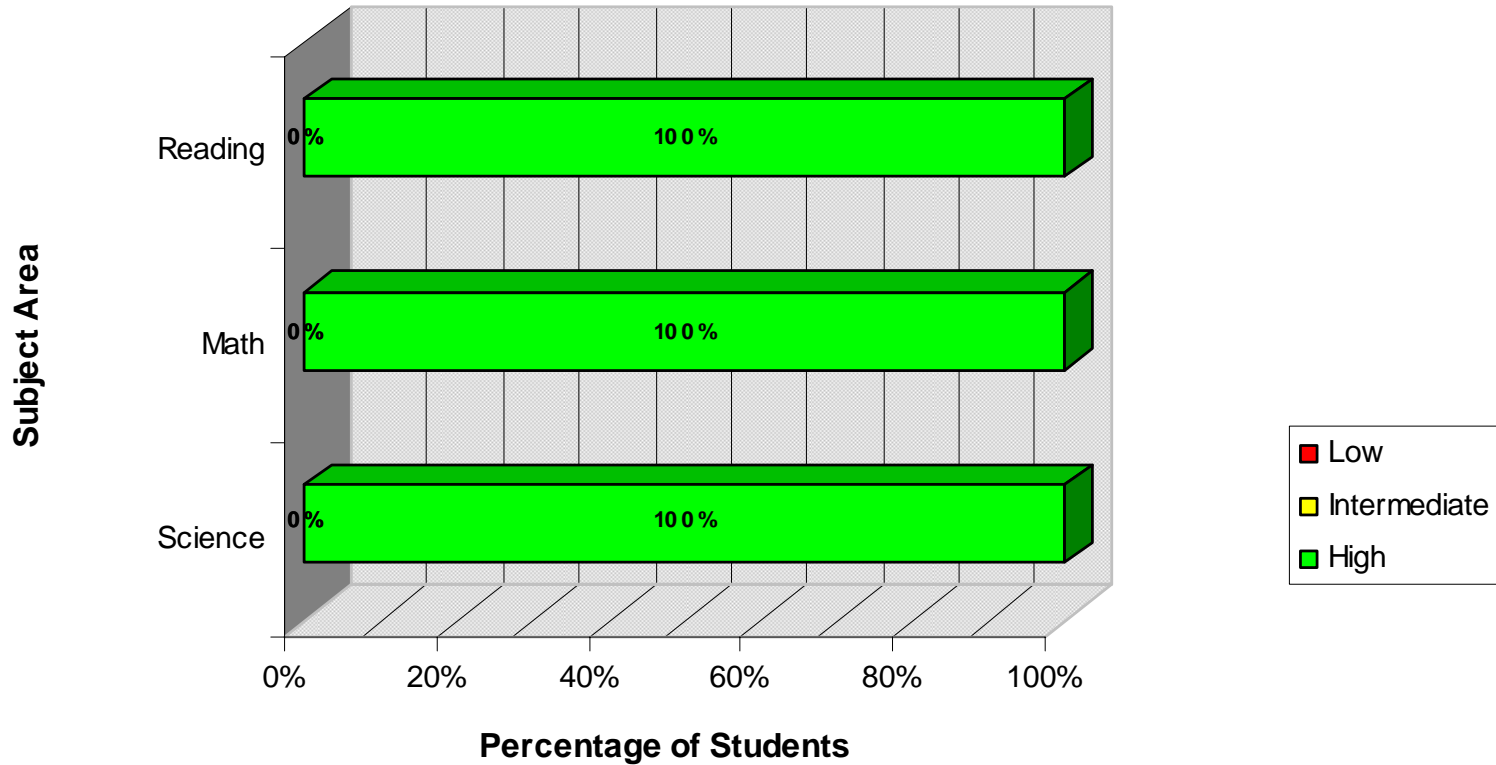
	Science	Math	Reading
■ High	0%	0%	0%
■ Intermediate	33%	17%	17%
■ Low	67%	83%	83%

Proficiency Levels - Non-IEP



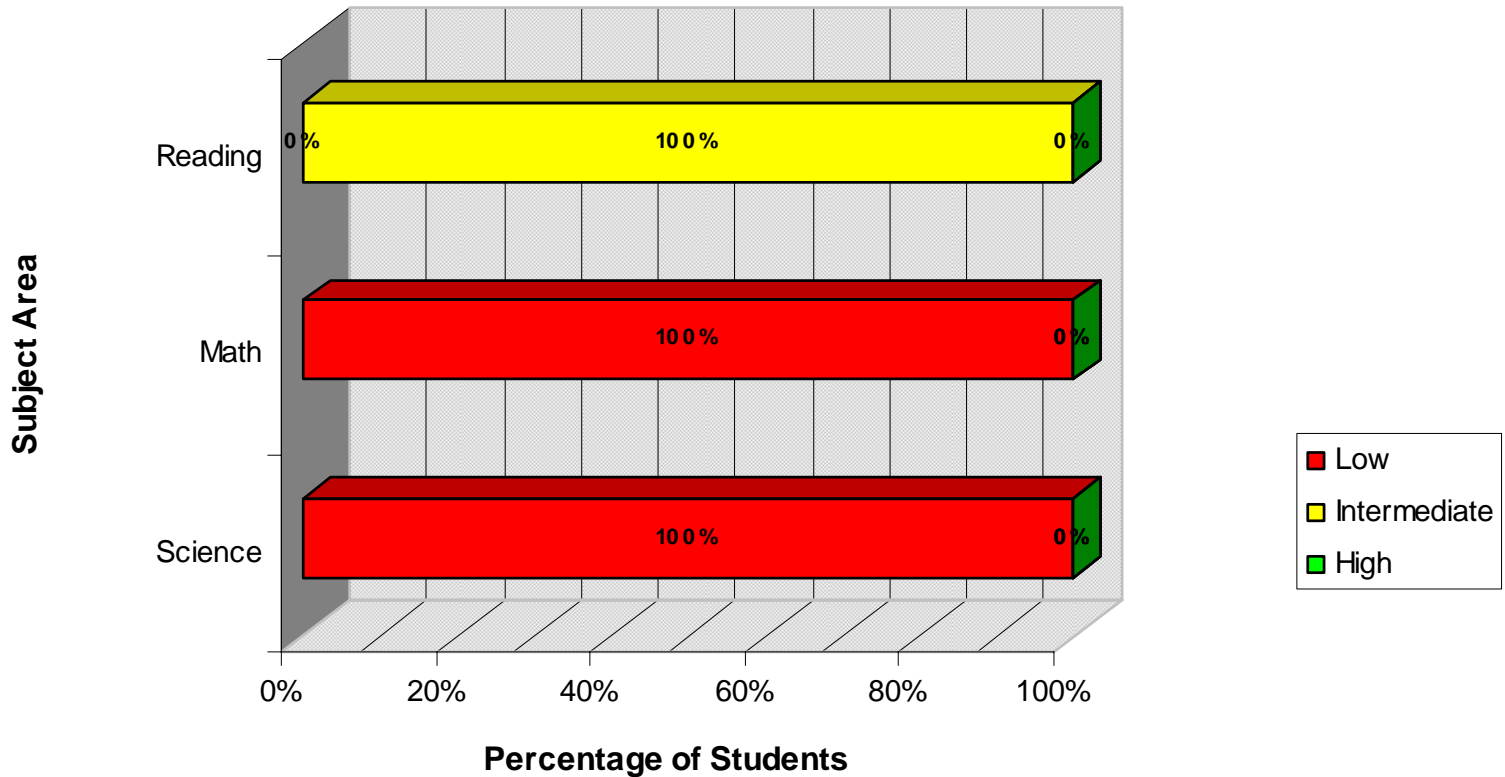
	Science	Math	Reading
High	6%	12%	12%
Intermediate	76%	71%	65%
Low	18%	18%	24%

Proficiency Levels - TAG



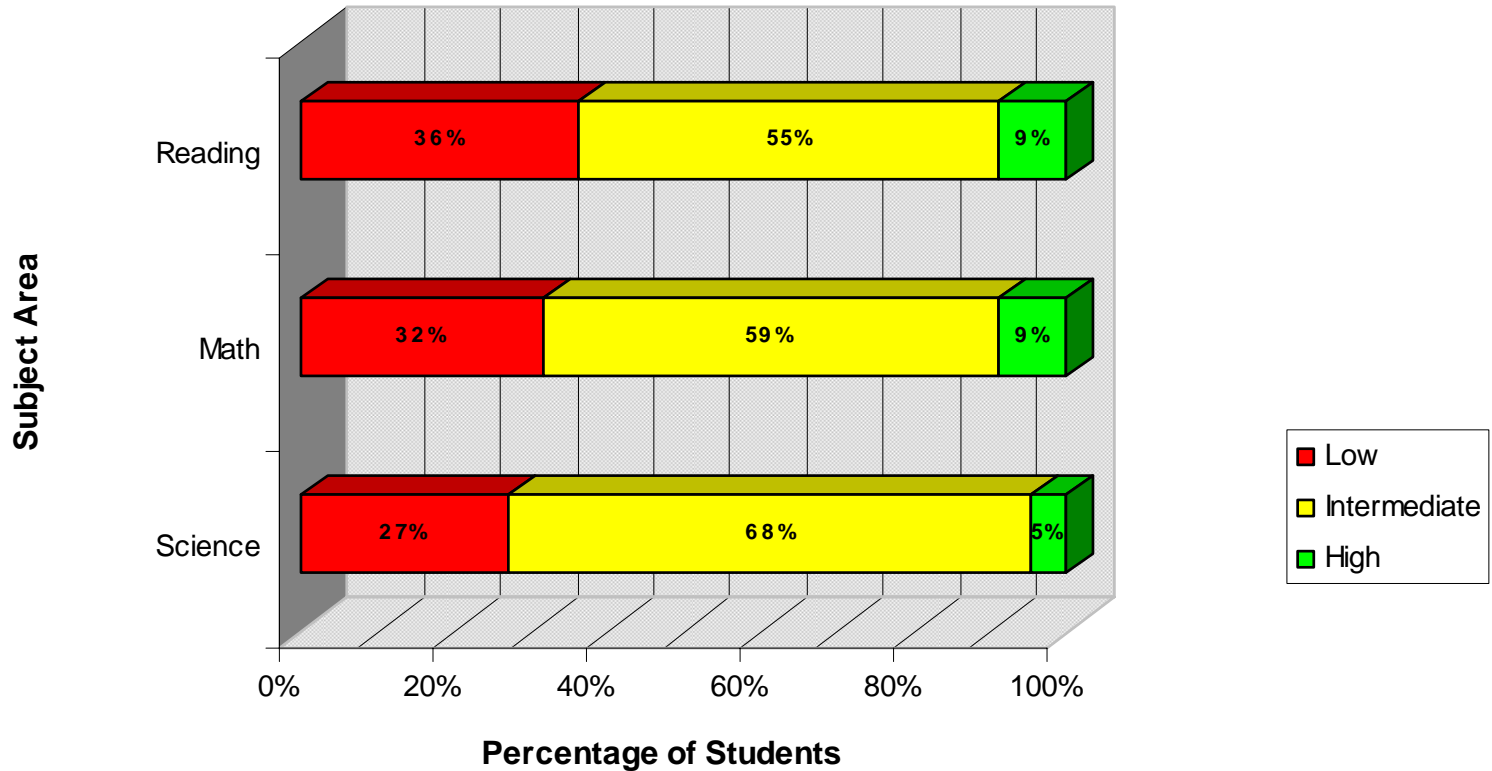
	Science	Math	Reading
High	100%	100%	100%
Intermediate	0%	0%	0%
Low	0%	0%	0%

Proficiency Levels - 504



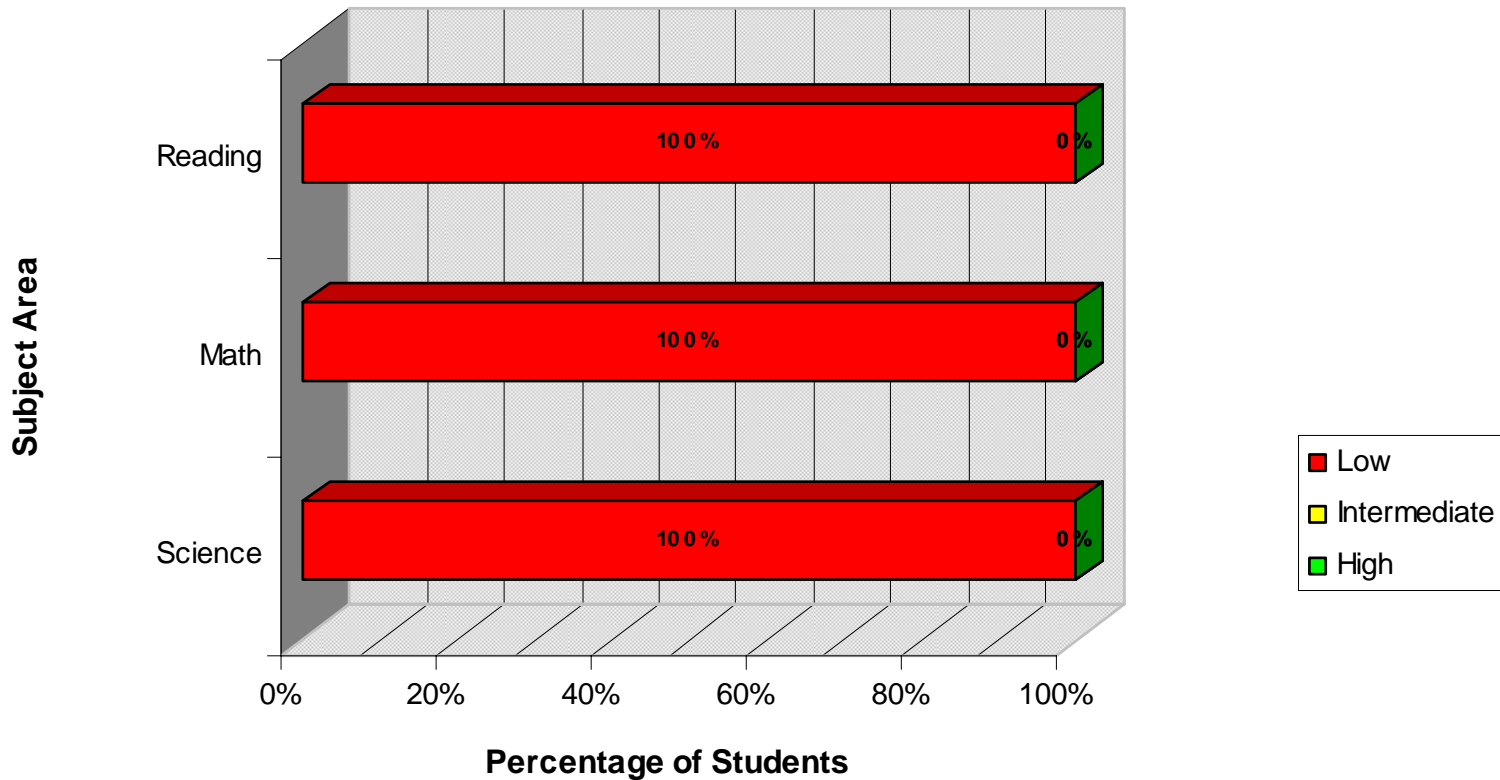
	Science	Math	Reading
High	0%	0%	0%
Intermediate	0%	0%	100%
Low	100%	100%	0%

Proficiency Levels - Full Academic Year



	Science	Math	Reading
High	5%	9%	9%
Intermediate	68%	59%	55%
Low	27%	32%	36%

Proficiency Levels - Non Full Academic Year



	Science	Math	Reading
High	0%	0%	0%
Intermediate	0%	0%	0%
Low	100%	100%	100%

CURRICULUM ANALYSIS OF READING, MATH AND SCIENCE BASED UPON WAHLSTROM METHOD

N = 23		Students BELOW Proficiency on ITED COMPOSITE				Students AT OR ABOVE Proficiency on ITED COMPOSITE			
Total below proficiency = 8		Students at 0-40 NPR				Students at 41-99 NPR			
Total at or above proficiency = 15		Reporting Category Proficiencies							
		Weakness		Strength		Weakness		Strength	
		0-40		41-99		0-40		41-99	
Reporting Catagories	Mean NPR	#	%	#	%	#	%	#	%
Reading Comprehension	49%	7	88%	1	13%	2	13%	13	87%
Mathematics	53%	7	88%	1	13%	1	7%	14	93%
Science	53%	6	75%	2	25%	1	7%	14	93%