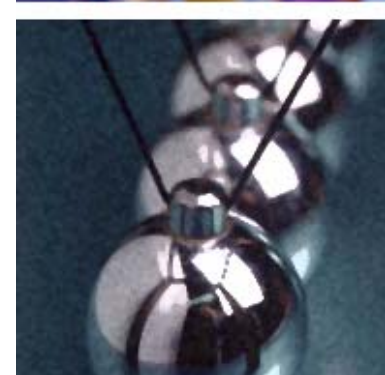
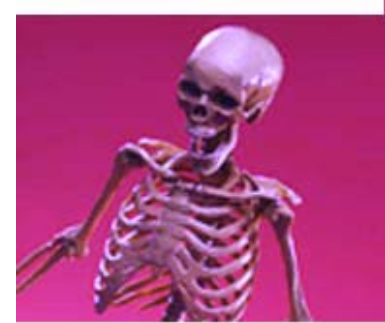
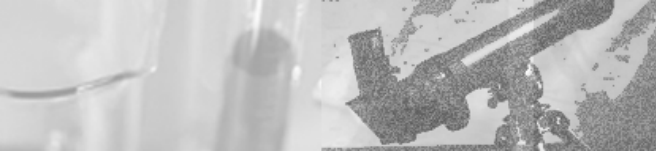


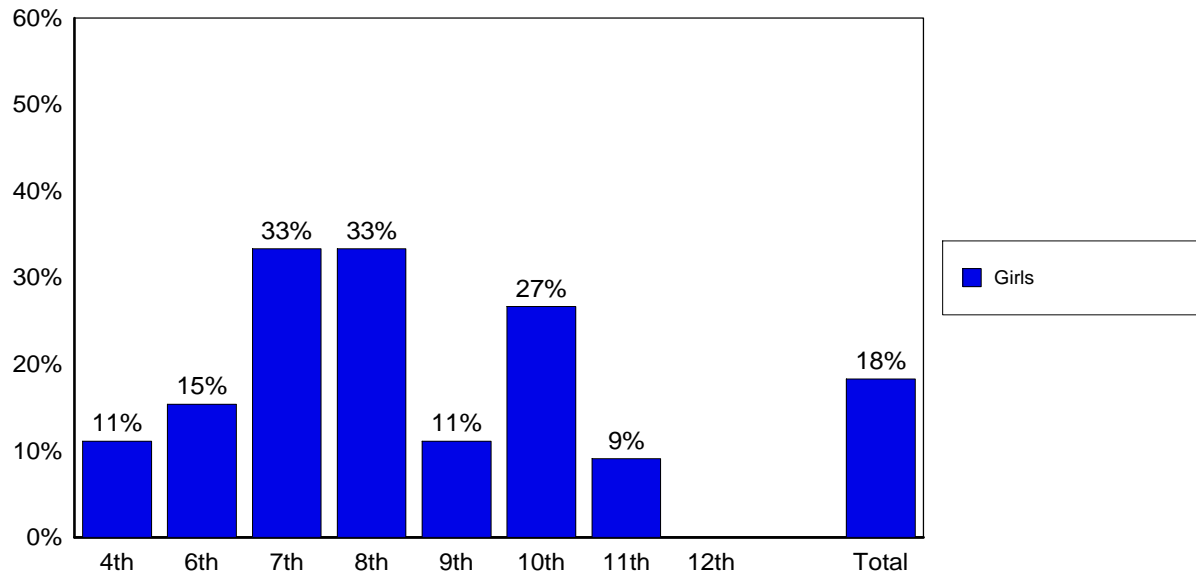
Olweus Presentation

Student Survey 2007



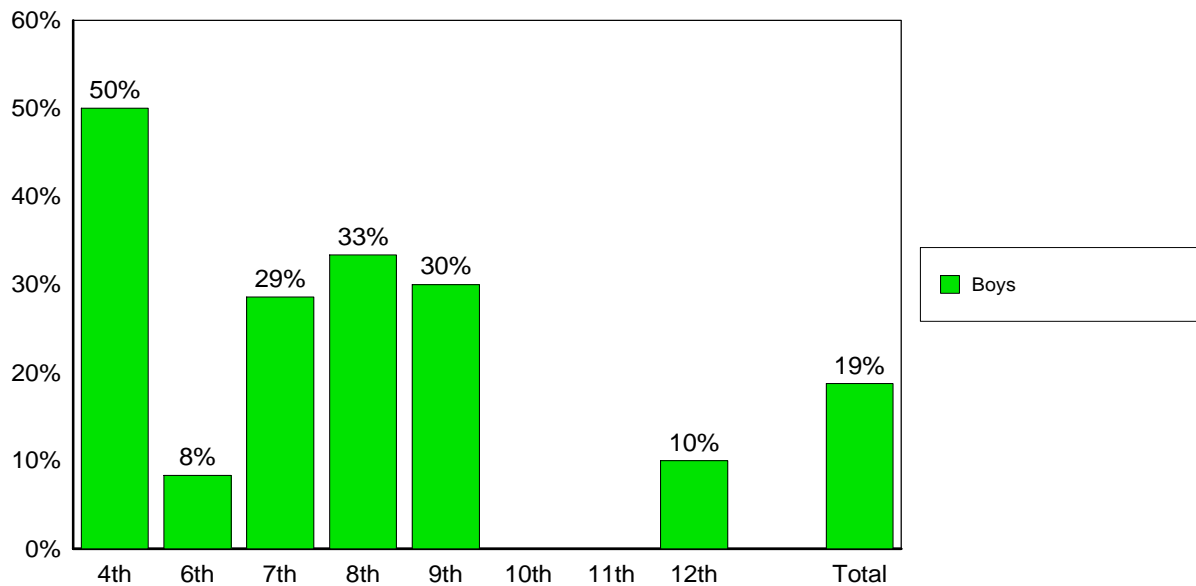
Girls who have been bullied.

Graph 3a. Percentage of girls who have been bullied "2-3 times a month" or more (Q4 dichotomized)



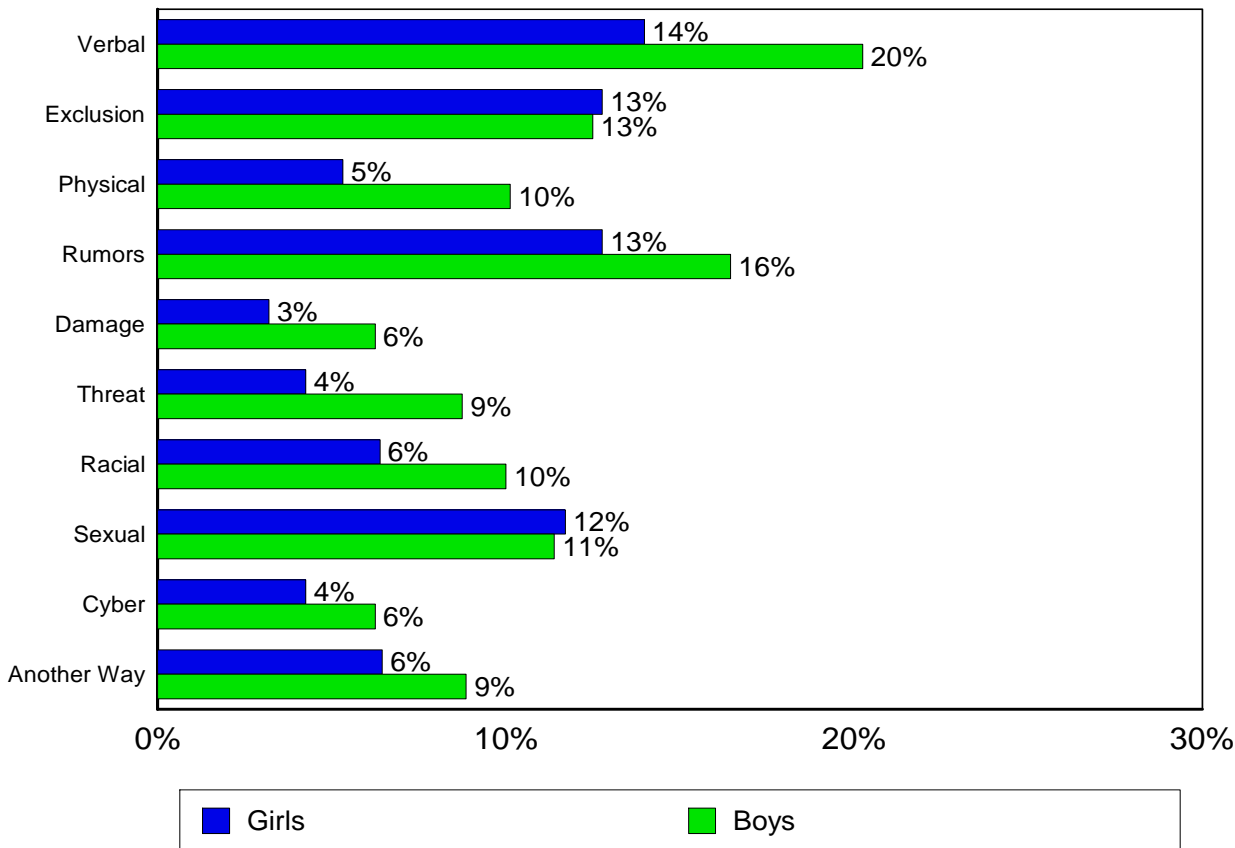
Boys who have been bullied.

Graph 3b. Percentage of boys who have been bullied "2-3 times a month" or more (Q4 dichotomized)



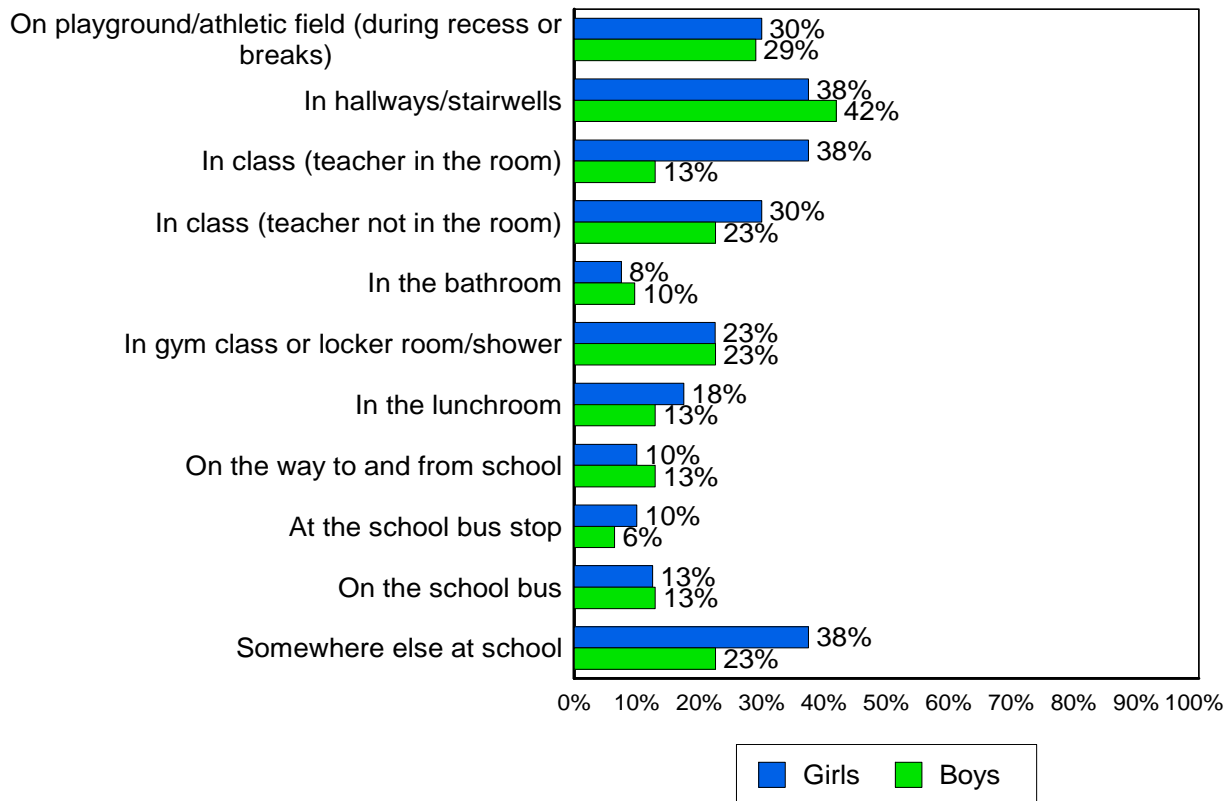
How students are bullied.

Graph 7. Ways of being bullied, for students who reported being bullied "2-3 times a month" or more (Q4)



Where students are bullied.

Graph 10a. Where the bullying has occurred, for students who reported being bullied "once or twice" or more (Q4). Percentage of girls and boys who report being bullied in various places



Strengths

- Data is stronger than the AEA 13 mean (Less Bullying)
- Most students like school
- Most students have empathy to bully victims
- Students want to intervene but are not equipped
- Students see staff as attempting to intervene



Weaknesses

- What is “other places”? (Where bullying is taking place)
- Victims don't see peers as intervening.
- Need higher % of students telling staff when bullying is taking place.



Bullying Data

Types

- Verbal
- Rumors
- Sexual
- Exclusion

Places

- Girls in the classroom
- Boys and girls in the hallways
- Elementary playground
- Lockerrooms



Focus Areas

- Where a need is to focus on:
 - 3rd and 4th grade boys
 - 7th and 8th grade boys and girls



Questions & Discussion

