



Iowa Youth Survey - Climate

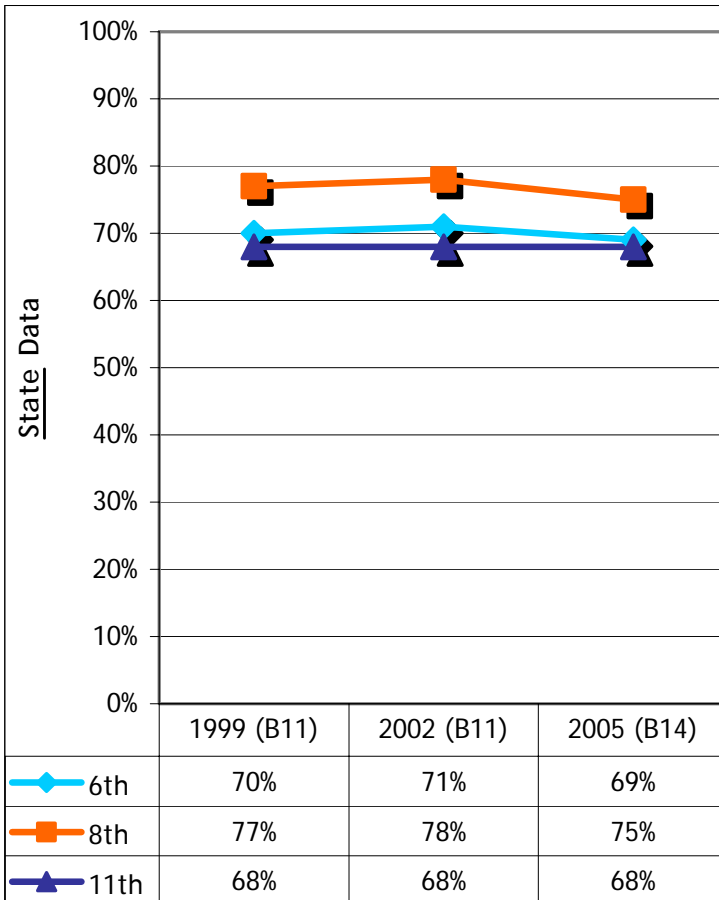
1999-2005



Percentage of students who report that in the last three weeks their teachers had to stop teaching at least once to deal with disruption

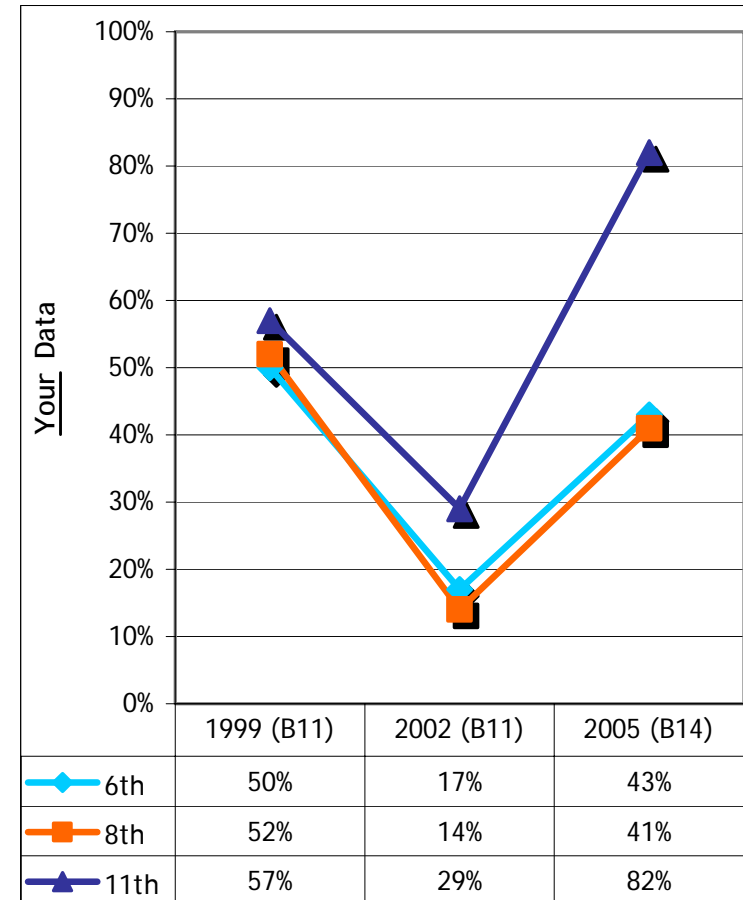
1999 (B11) 2002 (B11) 2005 (B14)

6th	70%	71%	69%
8th	77%	78%	75%
11th	68%	68%	68%



1999 (B11) 2002 (B11) 2005 (B14)

6th	50%	17%	43%
8th	52%	14%	41%
11th	57%	29%	82%



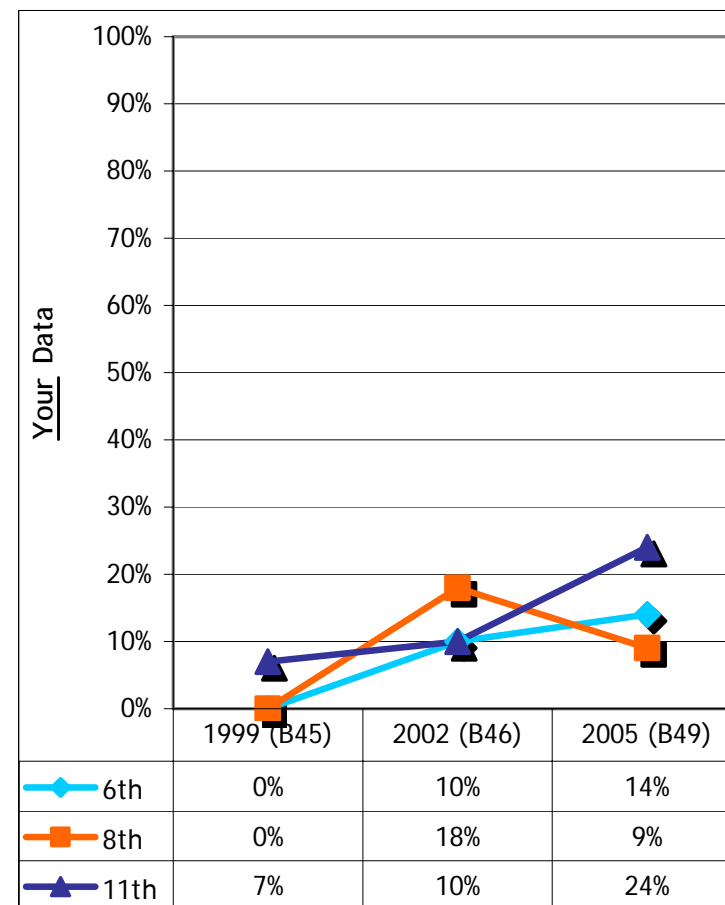
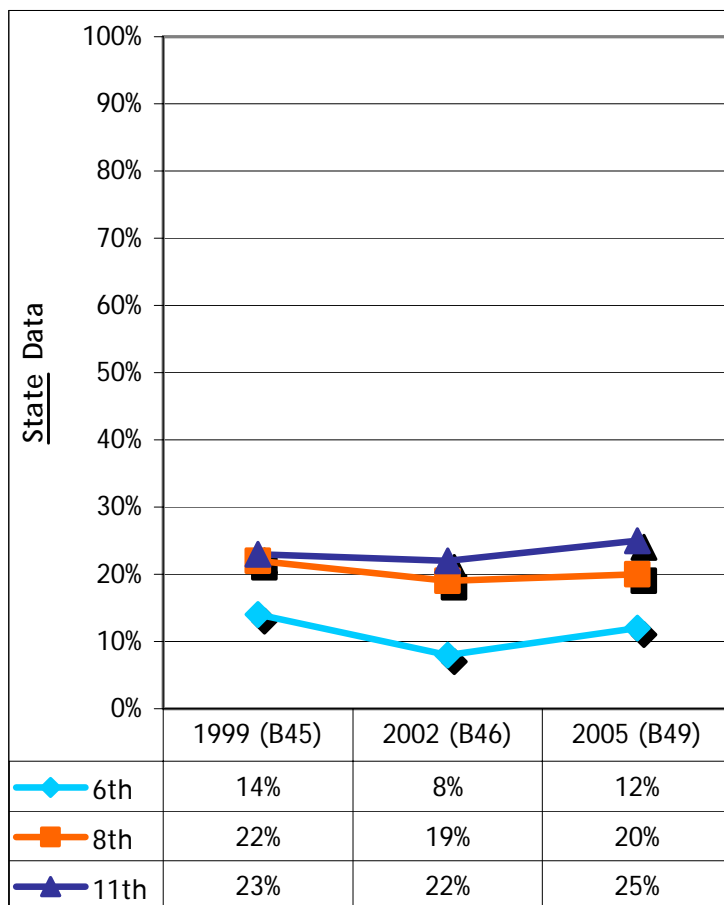
Percentage of students who have had their things stolen or deliberately damaged on school property at least once in the past 12 months.

1999 (B45) 2002 (B46) 2005 (B49)

6th	14%	8%	12%
8th	22%	19%	20%
11th	23%	22%	25%

1999 (B45) 2002 (B46) 2005 (B49)

6th	0%	10%	14%
8th	0%	18%	9%
11th	7%	10%	24%



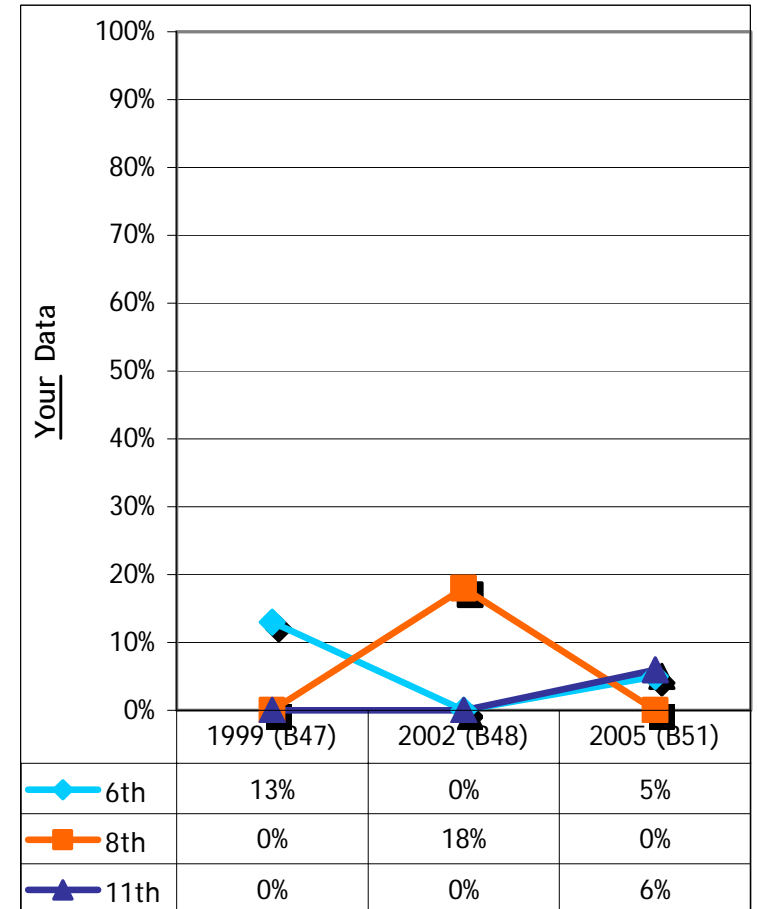
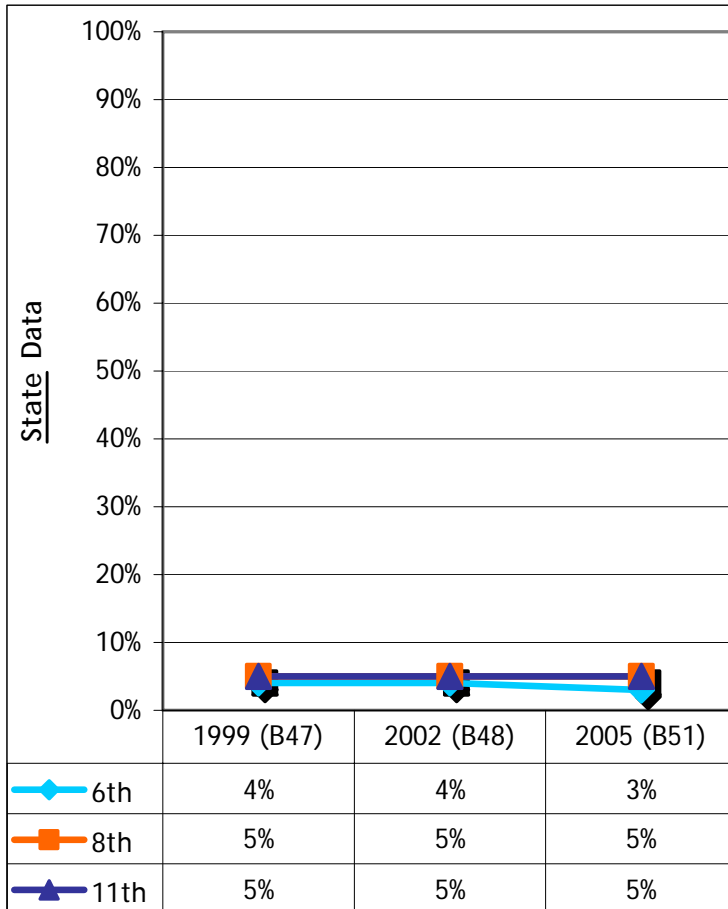
Percentage of students who have been threatened or injured by someone with a weapon on school property at least once in the past 12 months

1999 (B47) 2002 (B48) 2005 (B51)

6th	4%	4%	3%
8th	5%	5%	5%
11th	5%	5%	5%

1999 (B47) 2002 (B48) 2005 (B51)

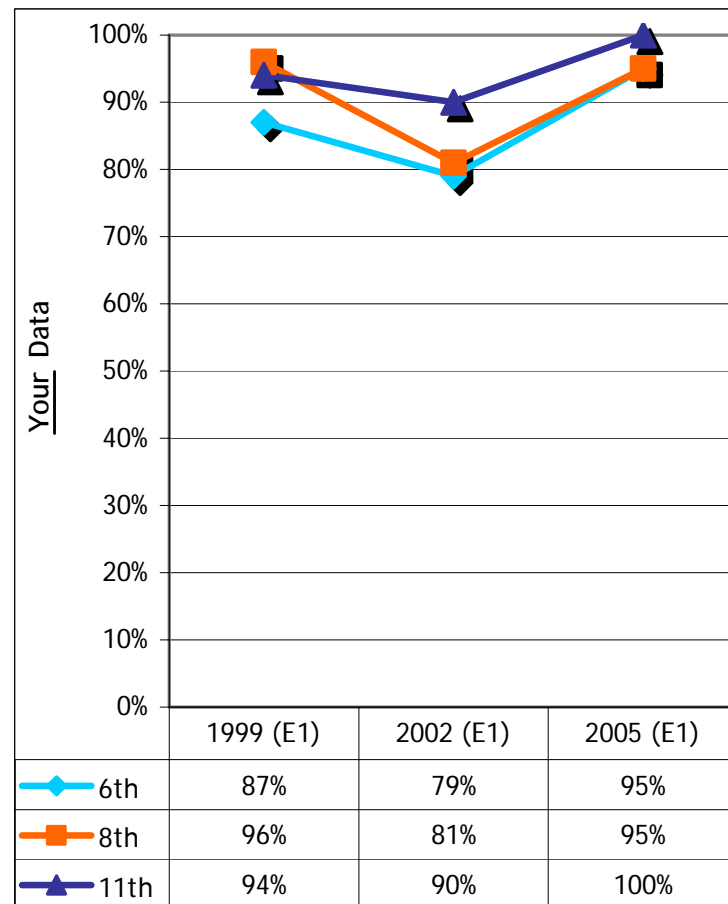
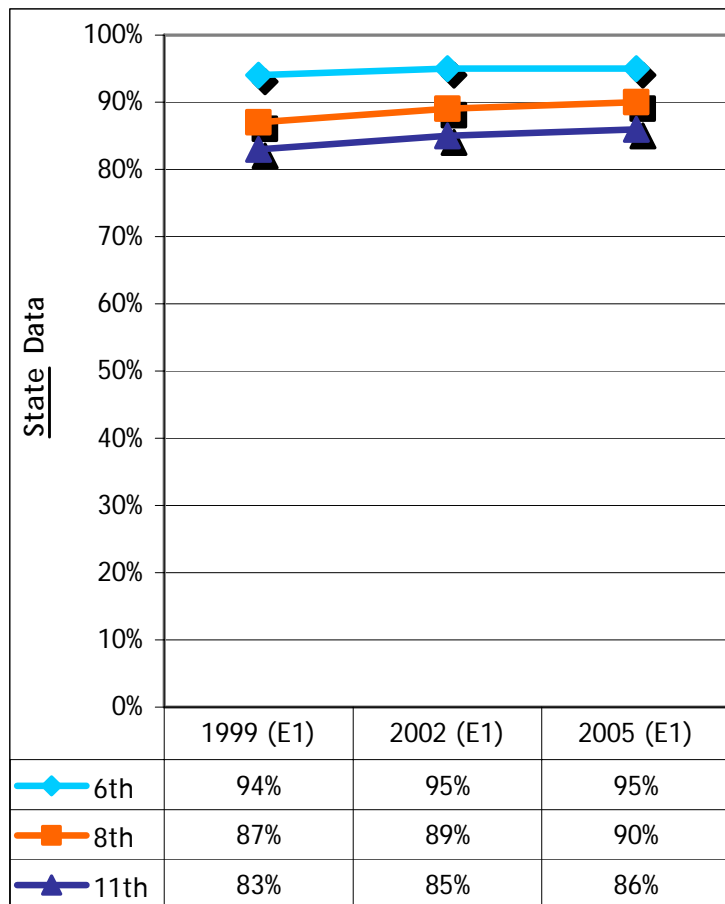
6th	13%	0%	5%
8th	0%	18%	0%
11th	0%	0%	6%



Percentage of students who agree or strongly agree that there are clear rules about what students can and cannot do

	1999 (E1)	2002 (E1)	2005 (E1)
6th	94%	95%	95%
8th	87%	89%	90%
11th	83%	85%	86%

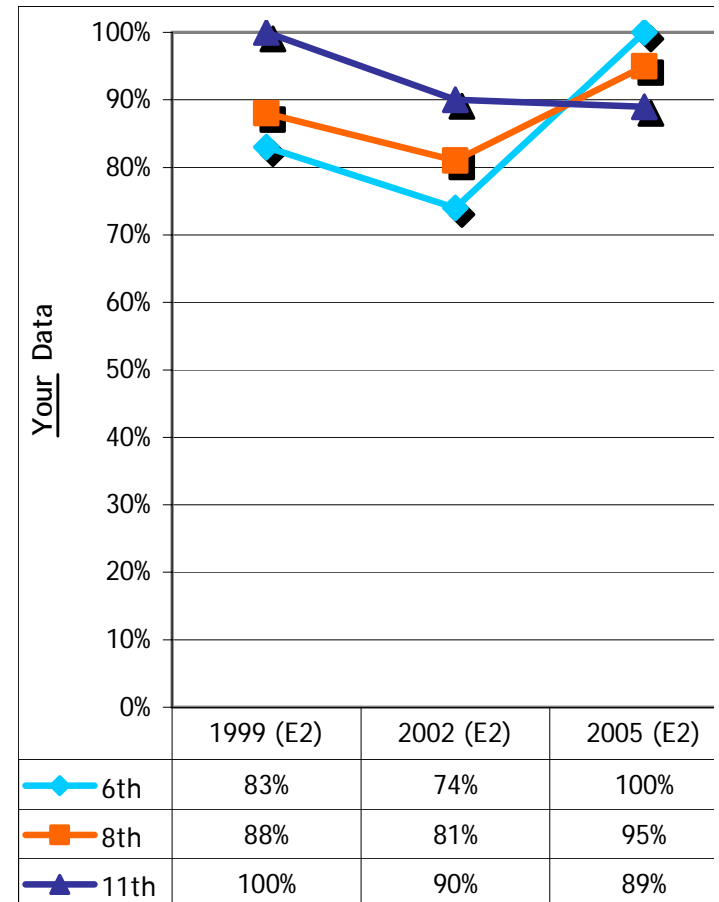
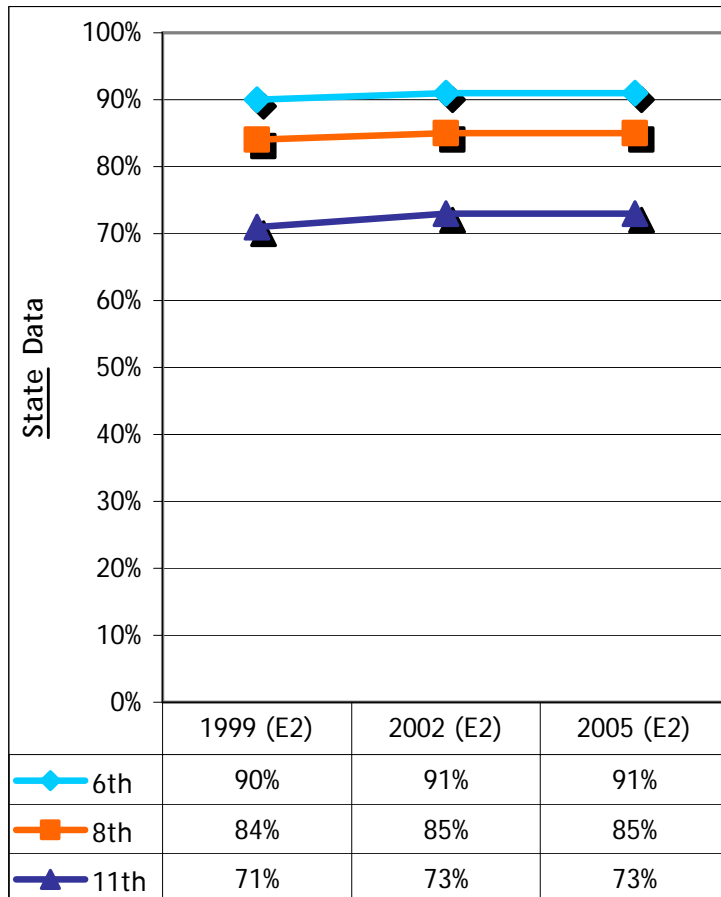
	1999 (E1)	2002 (E1)	2005 (E1)
6th	87%	79%	95%
8th	96%	81%	95%
11th	94%	90%	100%



Percentage of students who agree or strongly agree that the school principal and teachers consistently enforce school rules

	1999 (E2)	2002 (E2)	2005 (E2)
6th	90%	91%	91%
8th	84%	85%	85%
11th	71%	73%	73%

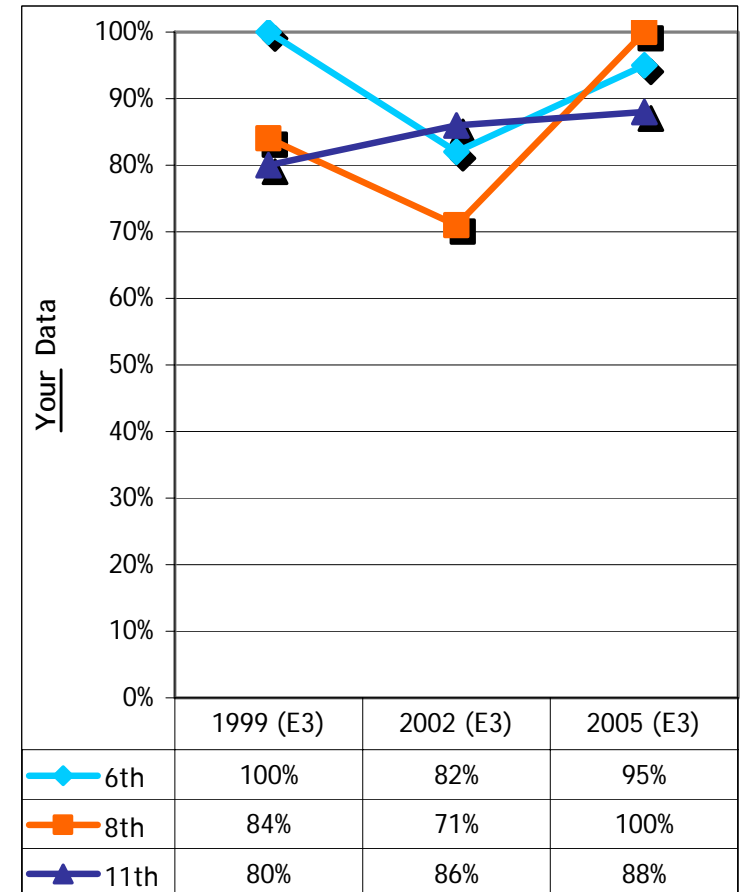
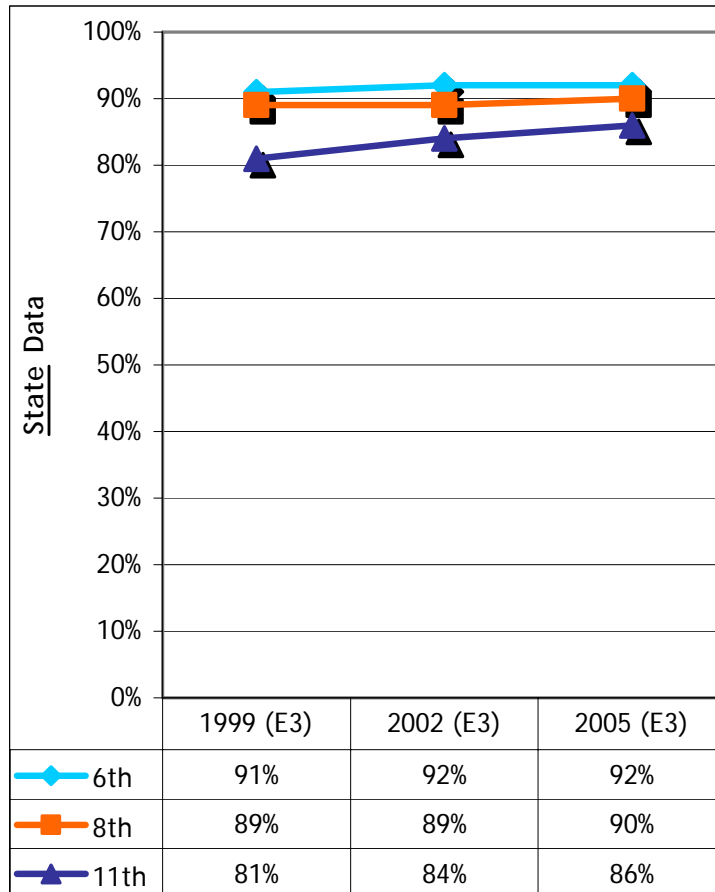
	1999 (E2)	2002 (E2)	2005 (E2)
6th	83%	74%	100%
8th	88%	81%	95%
11th	100%	90%	89%



Percentage of students who agree or strongly agree that if they skipped school, at least one of their parents/guardians would be notified.

	1999 (E3)	2002 (E3)	2005 (E3)
6th	91%	92%	92%
8th	89%	89%	90%
11th	81%	84%	86%

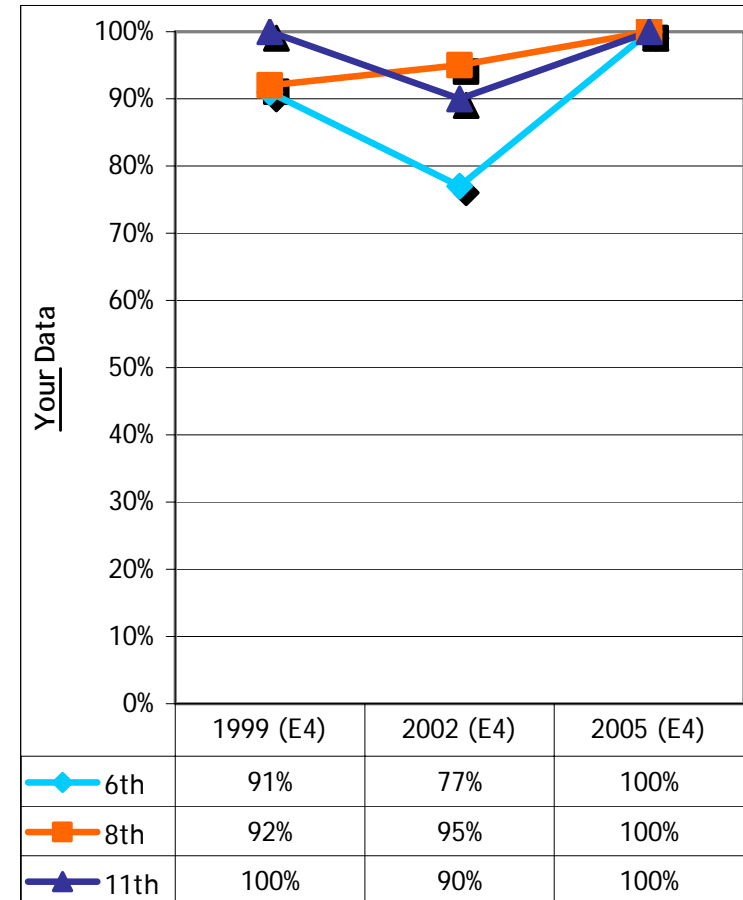
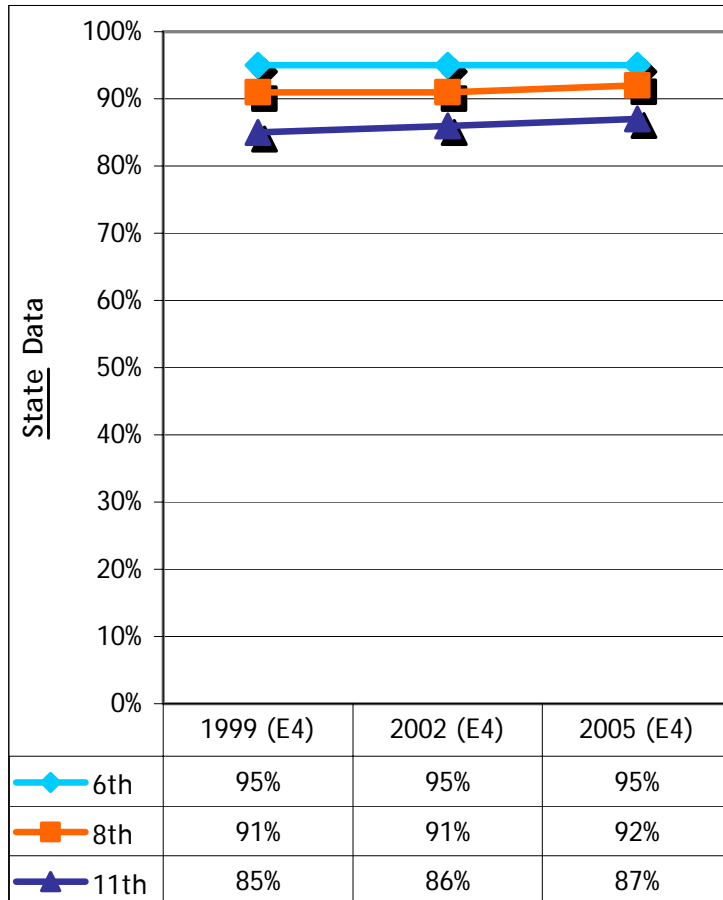
	1999 (E3)	2002 (E3)	2005 (E3)
6th	100%	82%	95%
8th	84%	71%	100%
11th	80%	86%	88%



Percentage of students who agree or strongly agree that students caught drinking, smoking, or using illegal drugs are not allowed to participate in extra-curricular activities.

	1999 (E4)	2002 (E4)	2005 (E4)
6th	95%	95%	95%
8th	91%	91%	92%
11th	85%	86%	87%

	1999 (E4)	2002 (E4)	2005 (E4)
6th	91%	77%	100%
8th	92%	95%	100%
11th	100%	90%	100%



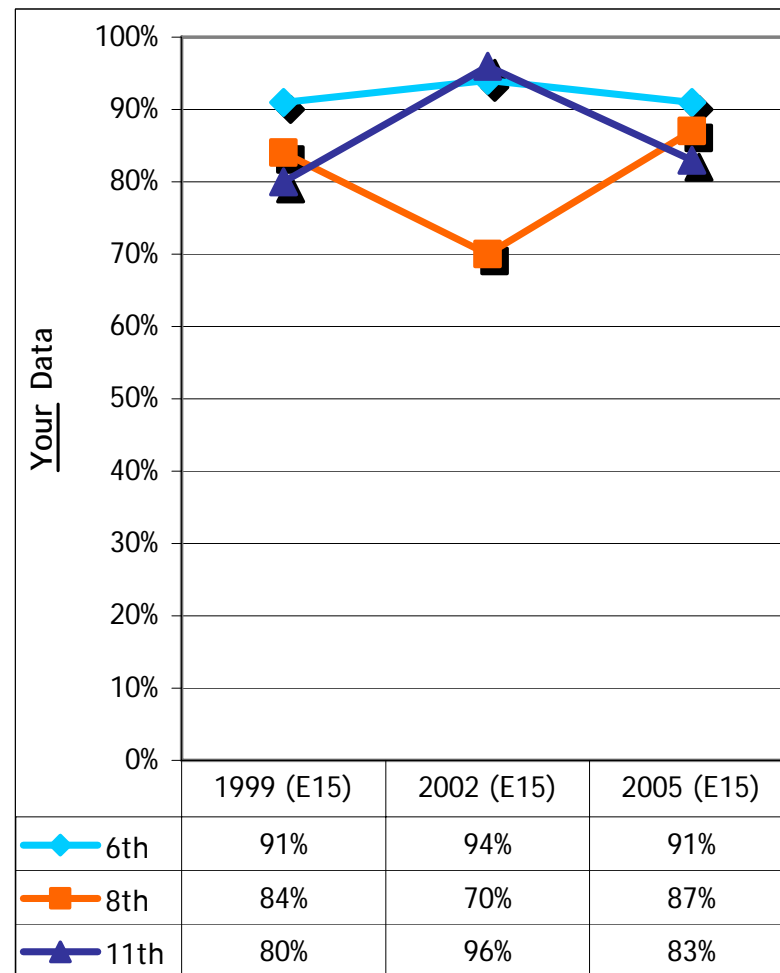
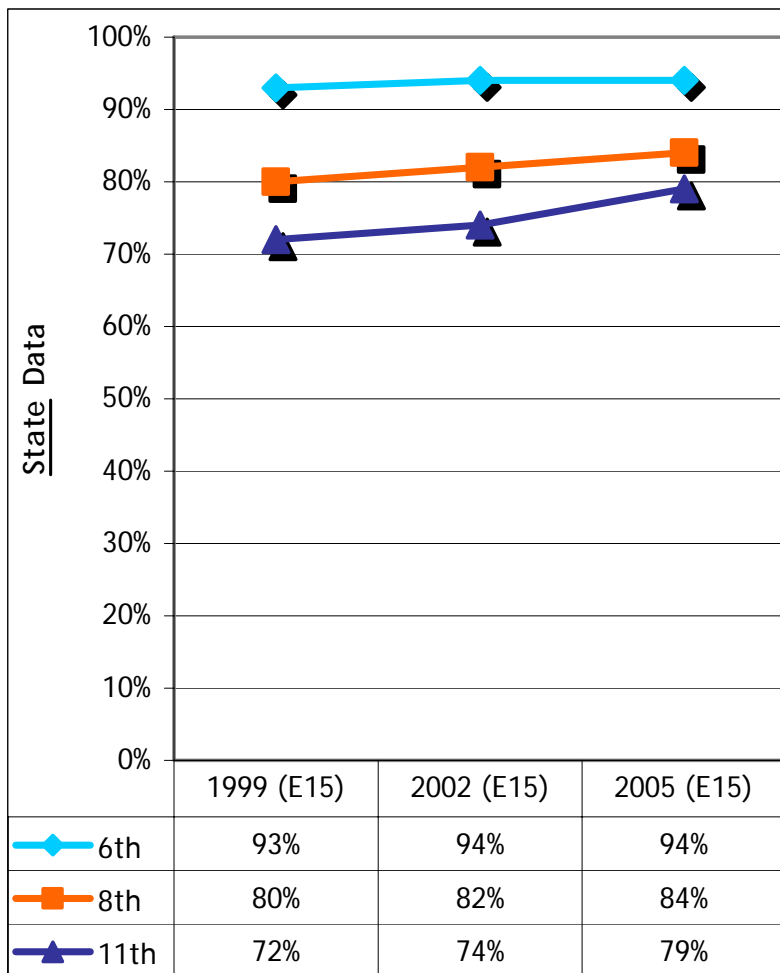
Percentage of students who agree or strongly agree that their teachers care about them

1999 (E15) 2002 (E15) 2005 (E15)

6th	93%	94%	94%
8th	80%	82%	84%
11th	72%	74%	79%

1999 (E15) 2002 (E15) 2005 (E15)

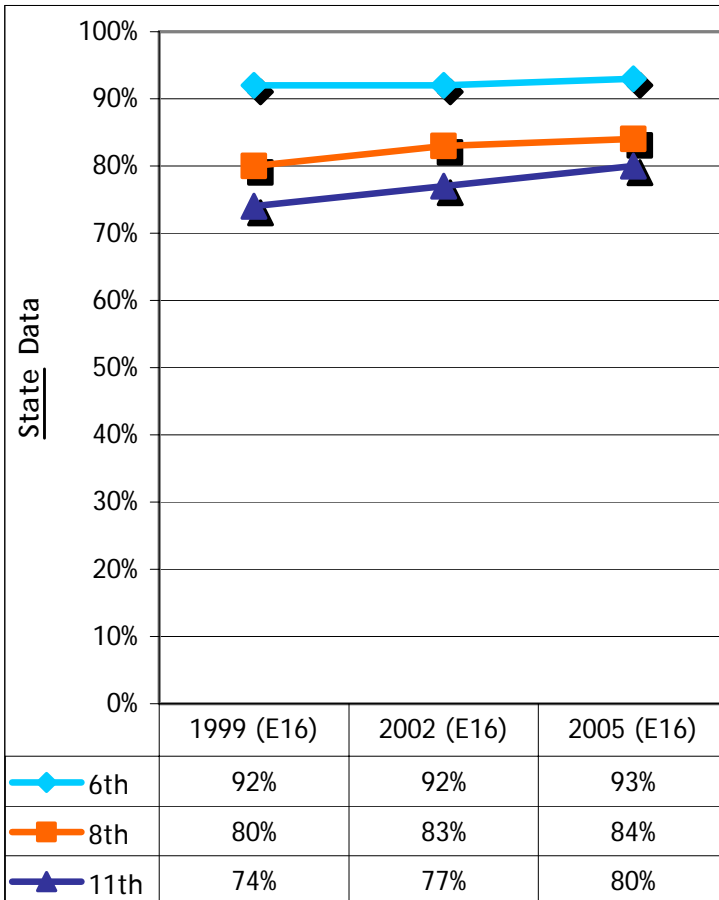
6th	91%	94%	91%
8th	84%	70%	87%
11th	80%	96%	83%



Percentage of students who agree or strongly agree that their teachers are available to talk with students one-on-one

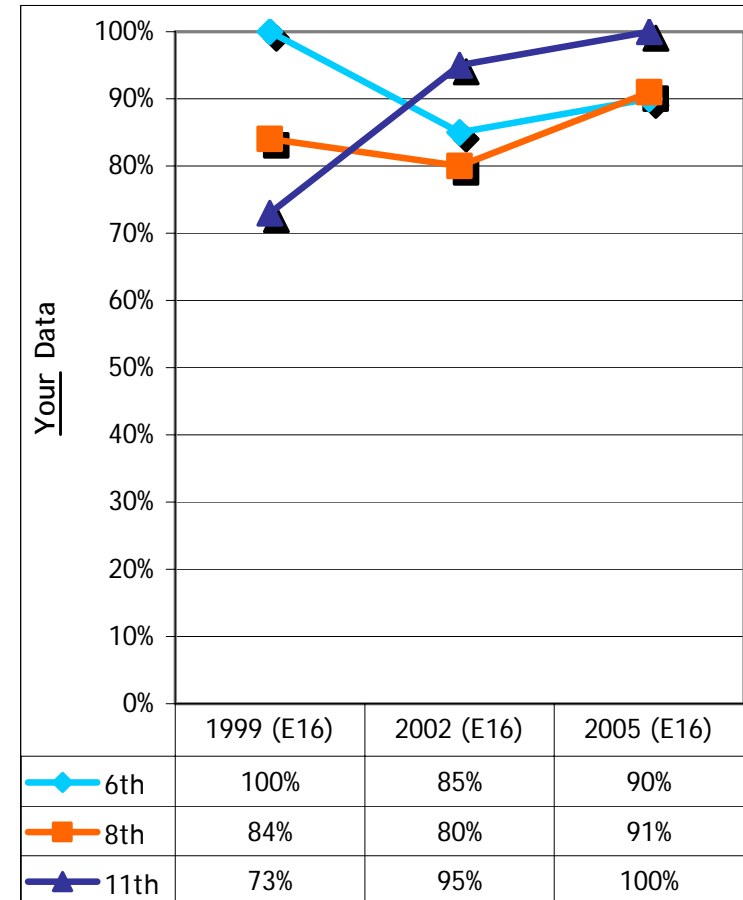
1999 (E16) 2002 (E16) 2005 (E16)

6th	92%	92%	93%
8th	80%	83%	84%
11th	74%	77%	80%



1999 (E16) 2002 (E16) 2005 (E16)

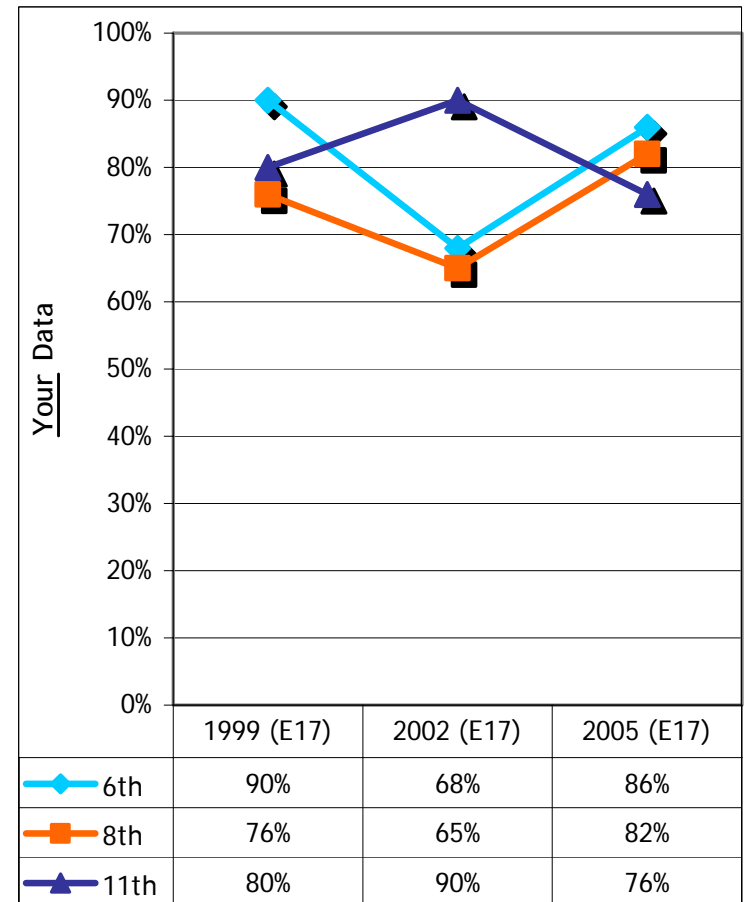
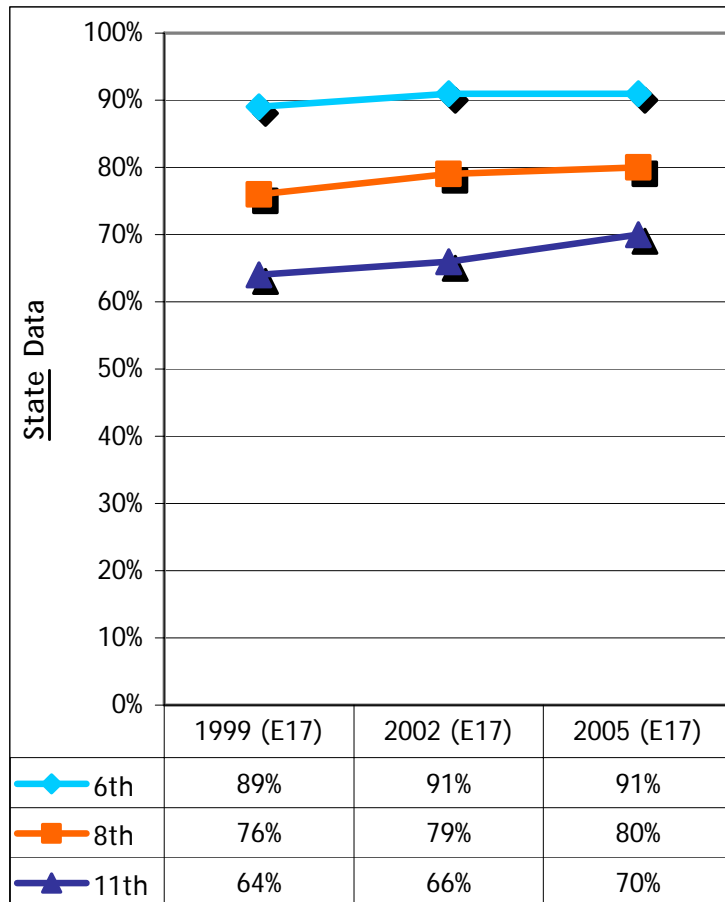
6th	100%	85%	90%
8th	84%	80%	91%
11th	73%	95%	100%



Percentage of students who agree or strongly agree that their teachers notice when they are doing a good job and let them know about it

	1999 (E17)	2002 (E17)	2005 (E17)
6th	89%	91%	91%
8th	76%	79%	80%
11th	64%	66%	70%

	1999 (E17)	2002 (E17)	2005 (E17)
6th	90%	68%	86%
8th	76%	65%	82%
11th	80%	90%	76%



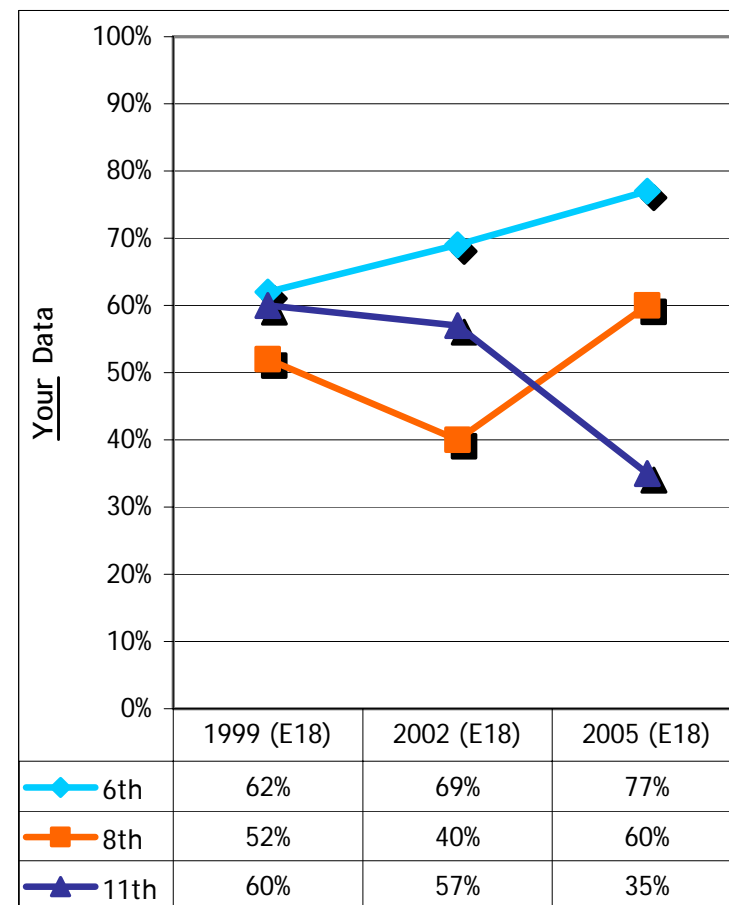
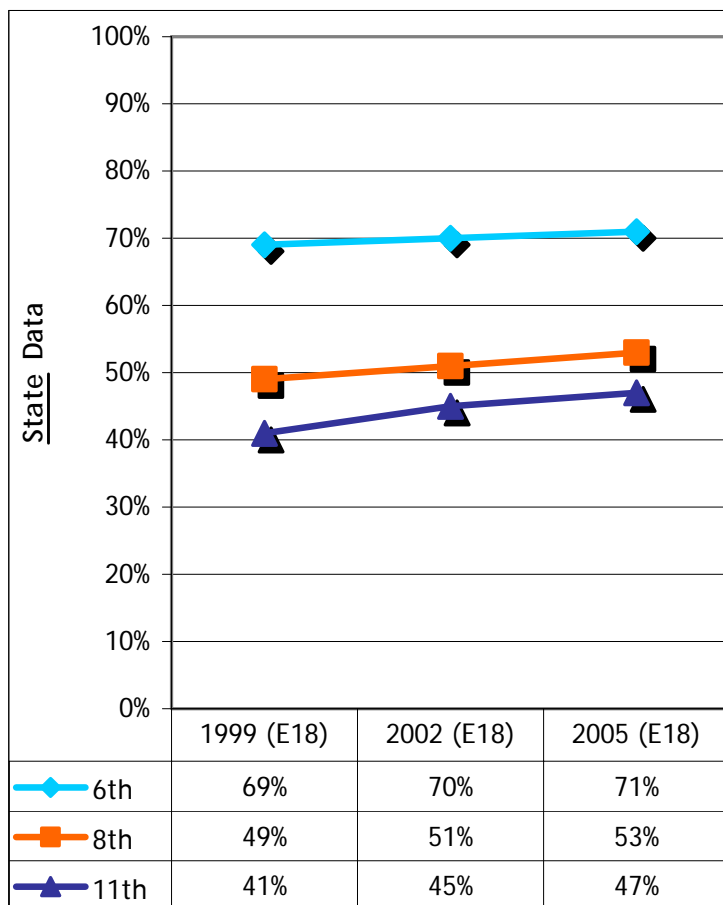
Percentage of students who agree or strongly agree that students in their school treat each other with respect

1999 (E18) 2002 (E18) 2005 (E18)

6th	69%	70%	71%
8th	49%	51%	53%
11th	41%	45%	47%

1999 (E18) 2002 (E18) 2005 (E18)

6th	62%	69%	77%
8th	52%	40%	60%
11th	60%	57%	35%



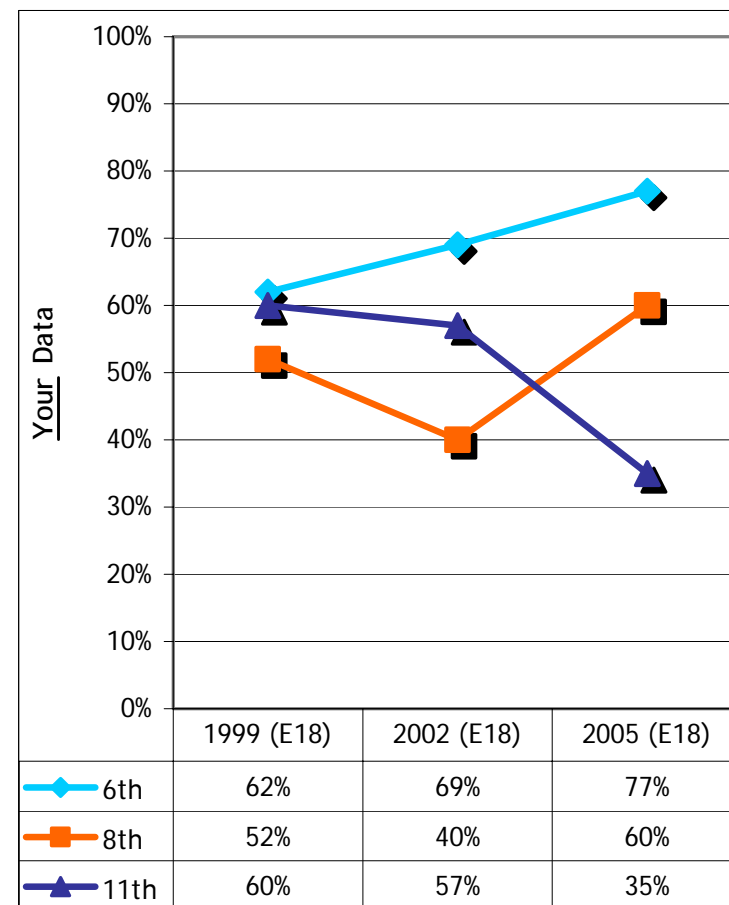
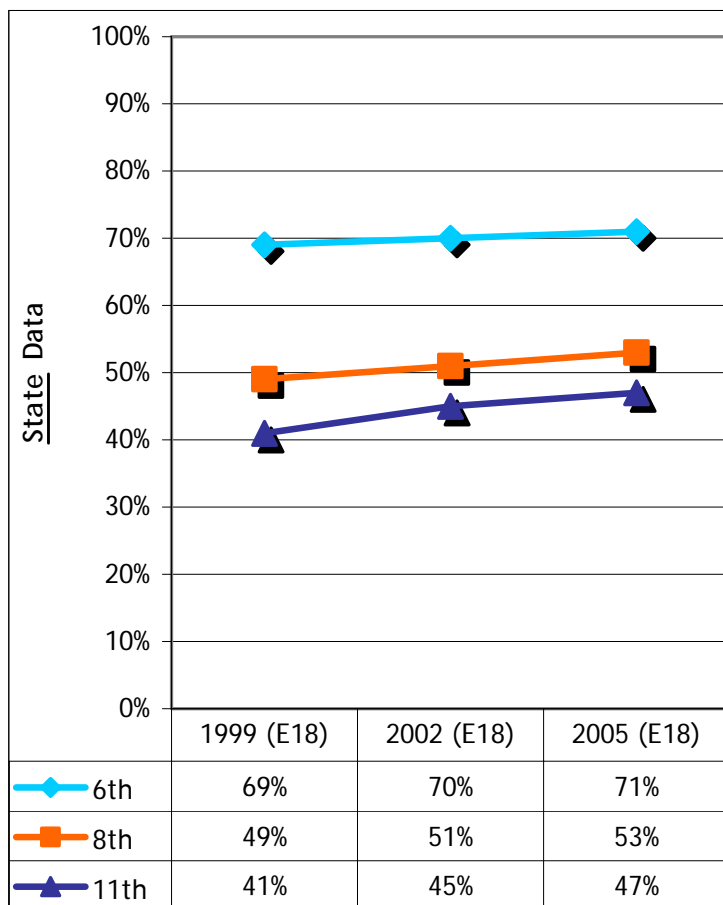
Percentage of students who agree or strongly agree that students in their school treat each other with respect

1999 (E18) 2002 (E18) 2005 (E18)

6th	69%	70%	71%
8th	49%	51%	53%
11th	41%	45%	47%

1999 (E18) 2002 (E18) 2005 (E18)

6th	62%	69%	77%
8th	52%	40%	60%
11th	60%	57%	35%



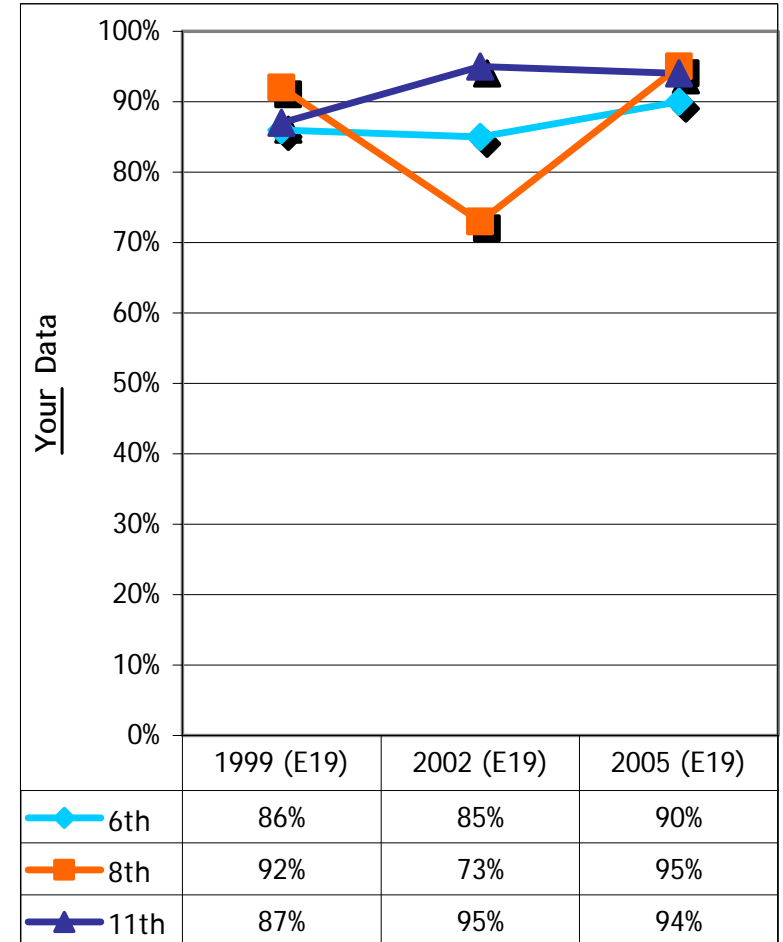
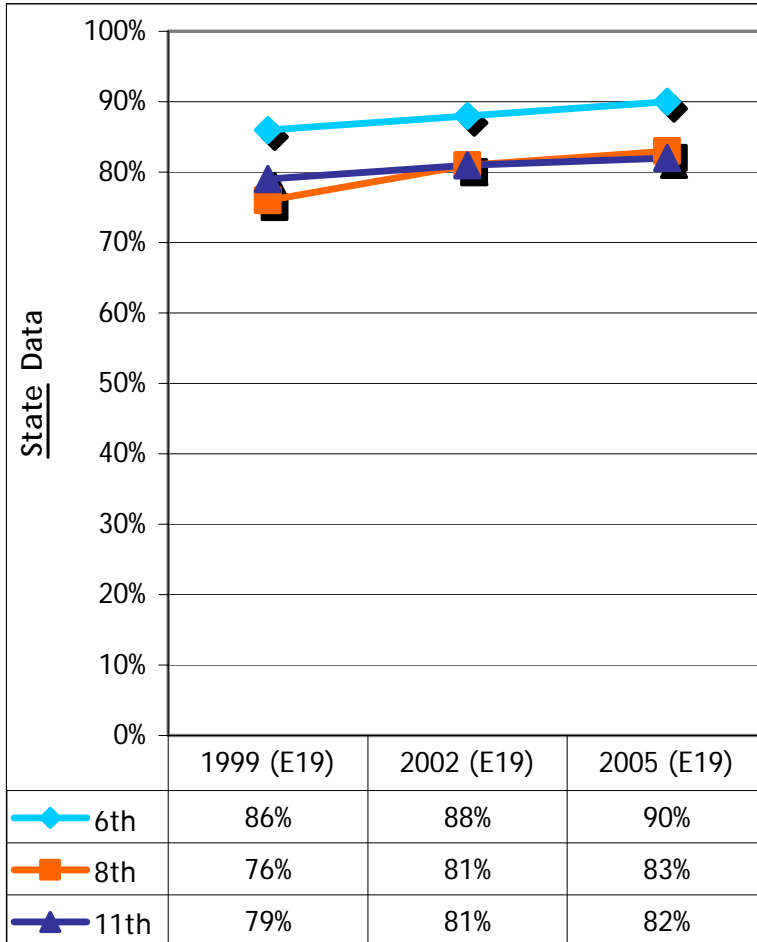
Percentage of students who agree or strongly agree that they feel safe at school

1999 (E19) 2002 (E19) 2005 (E19)

<i>6th</i>	86%	88%	90%
<i>8th</i>	76%	81%	83%
<i>11th</i>	79%	81%	82%

1999 (E19) 2002 (E19) 2005 (E19)

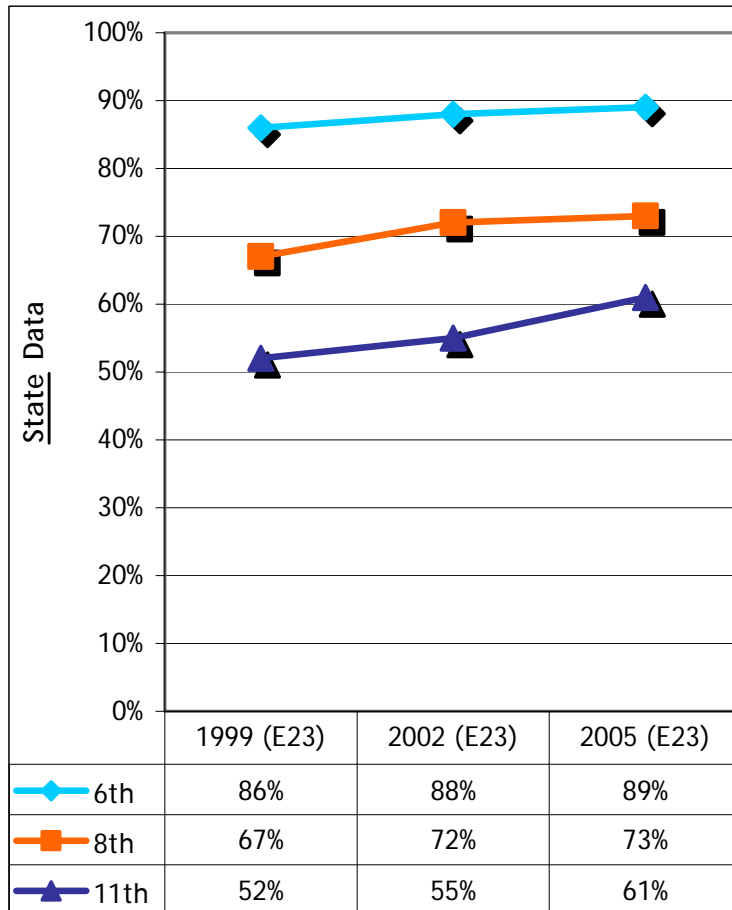
<i>6th</i>	86%	85%	90%
<i>8th</i>	92%	73%	95%
<i>11th</i>	87%	95%	94%



Percentage of students who agree or strongly agree that their school lets a parent/guardian know if they are doing a good job

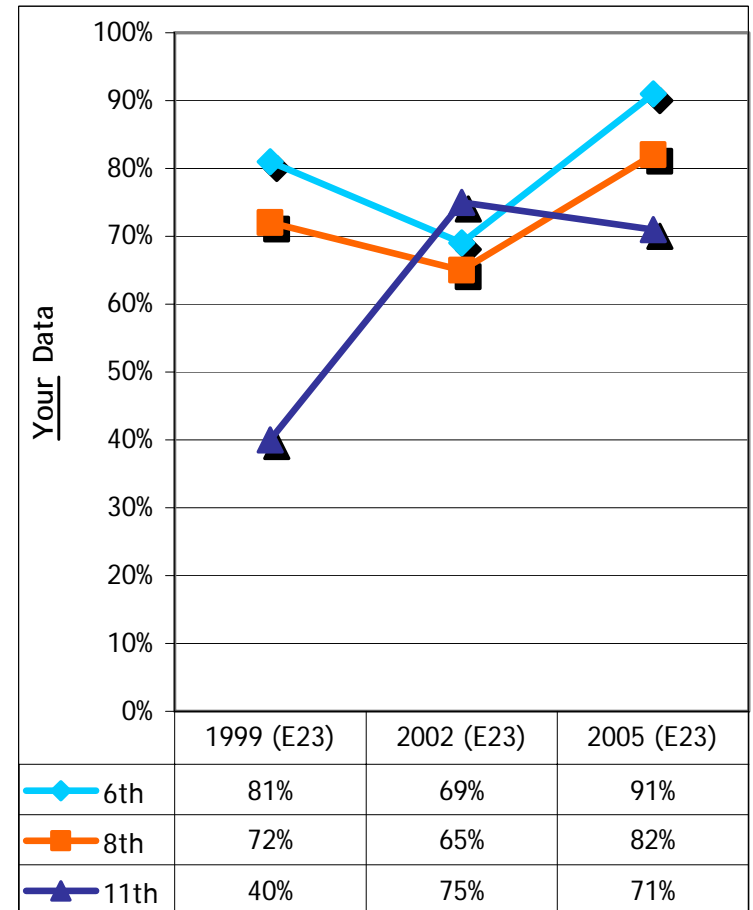
1999 (E23) 2002 (E23) 2005 (E23)

6th	86%	88%	89%
8th	67%	72%	73%
11th	52%	55%	61%



1999 (E23) 2002 (E23) 2005 (E23)

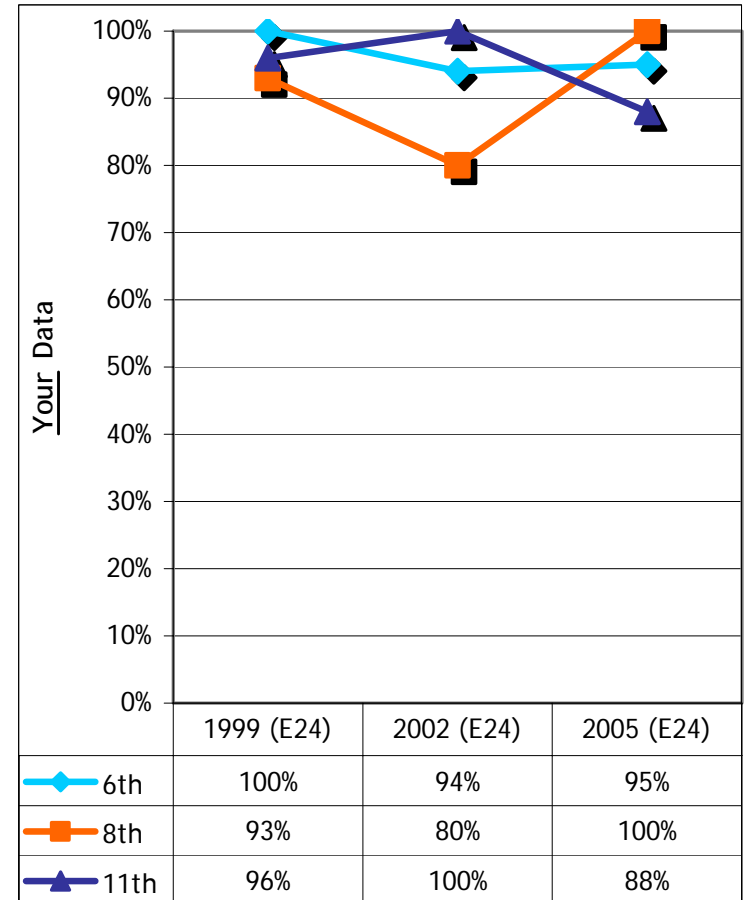
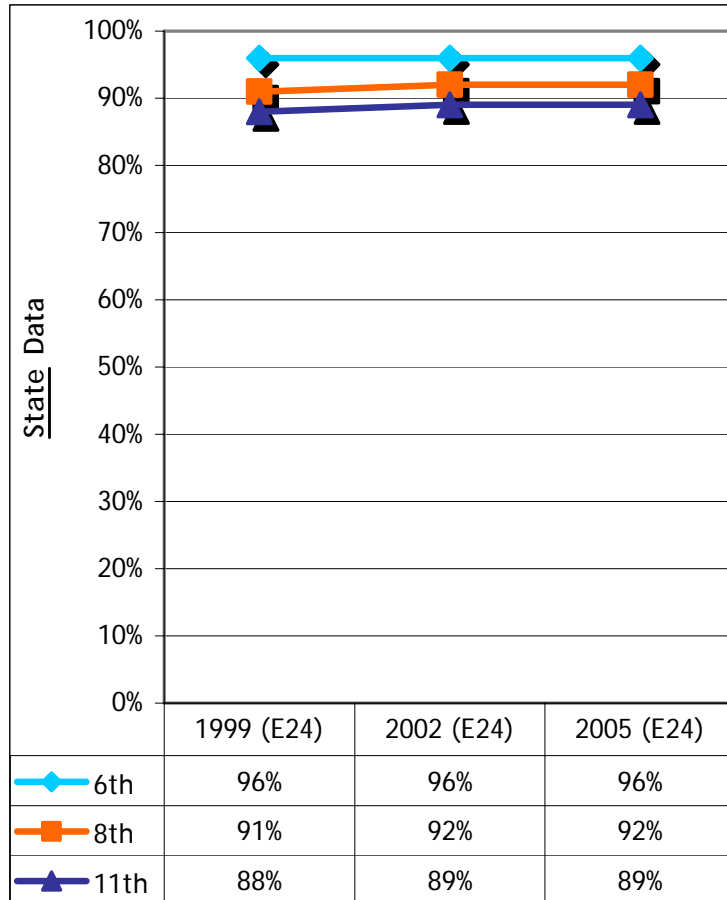
6th	81%	69%	91%
8th	72%	65%	82%
11th	40%	75%	71%



Percentage of students who agree or strongly agree that their school lets a parent/guardian know if they've done something wrong

	1999 (E24)	2002 (E24)	2005 (E24)
6th	96%	96%	96%
8th	91%	92%	92%
11th	88%	89%	89%

	1999 (E24)	2002 (E24)	2005 (E24)
6th	100%	94%	95%
8th	93%	80%	100%
11th	96%	100%	88%



Percentage of students who agree or strongly agree that there is a least one adult at school that they could go to for help with a problem

	1999 (E25)	2002 (E25)	2005 (E25)
6th	93%	93%	95%
8th	87%	87%	89%
11th	81%	84%	87%

	1999 (E25)	2002 (E25)	2005 (E25)
6th	96%	89%	80%
8th	100%	90%	100%
11th	80%	97%	88%

