

---

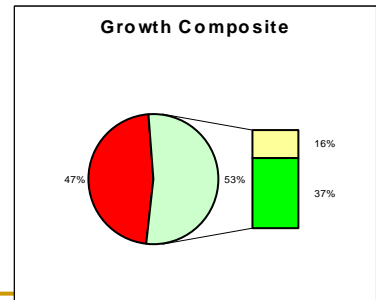
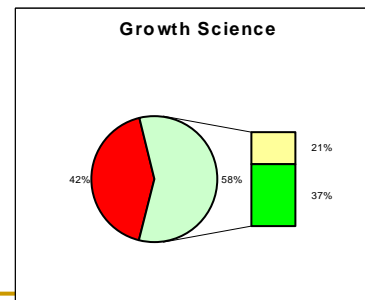
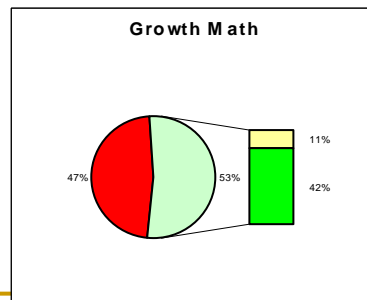
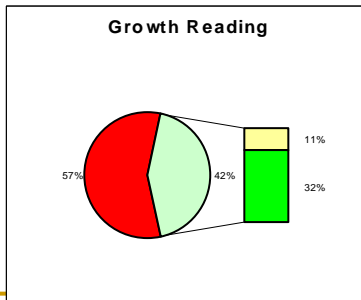
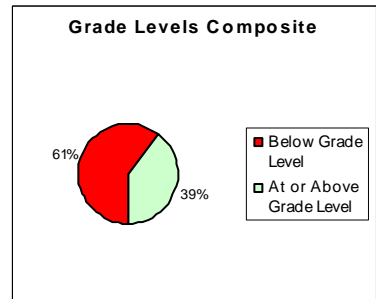
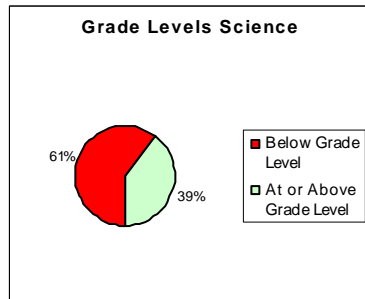
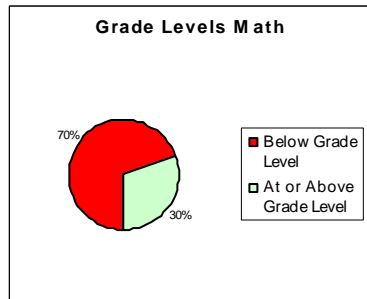
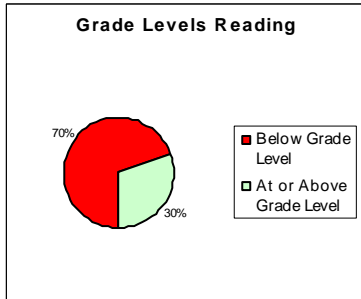
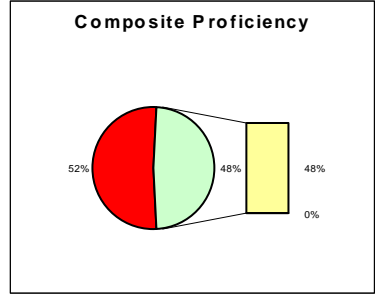
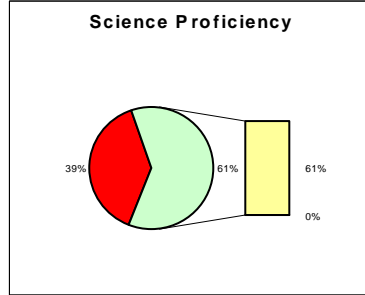
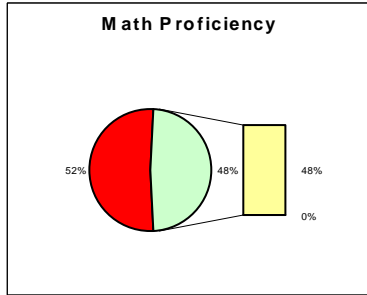
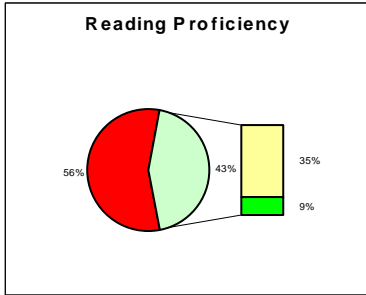
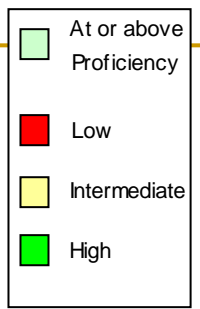
# Seventh Grade – Class of 2011

## ITBS

---

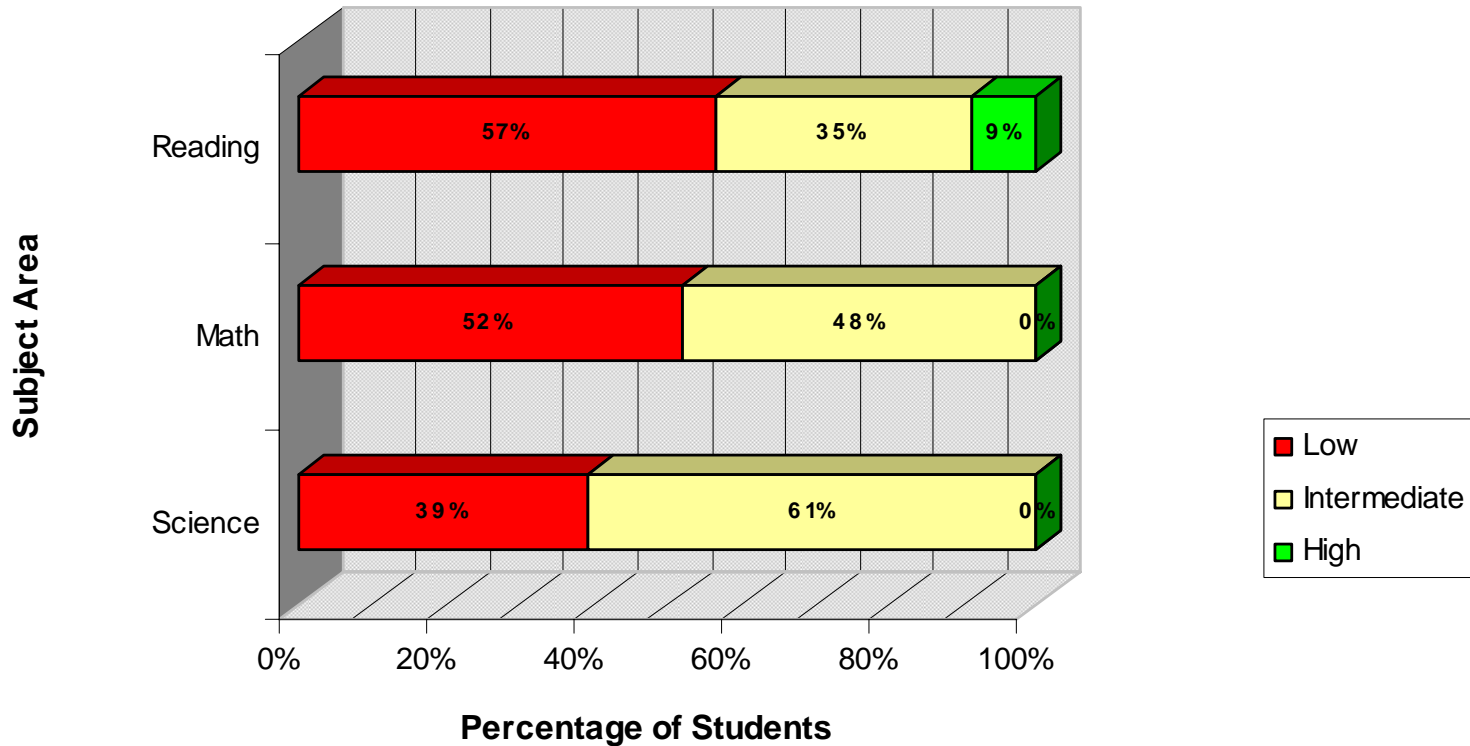
Spring 2006

## Proficiency Level, Grade Level, and Growth Charts in Reading, Math, Science, and Overall Composite



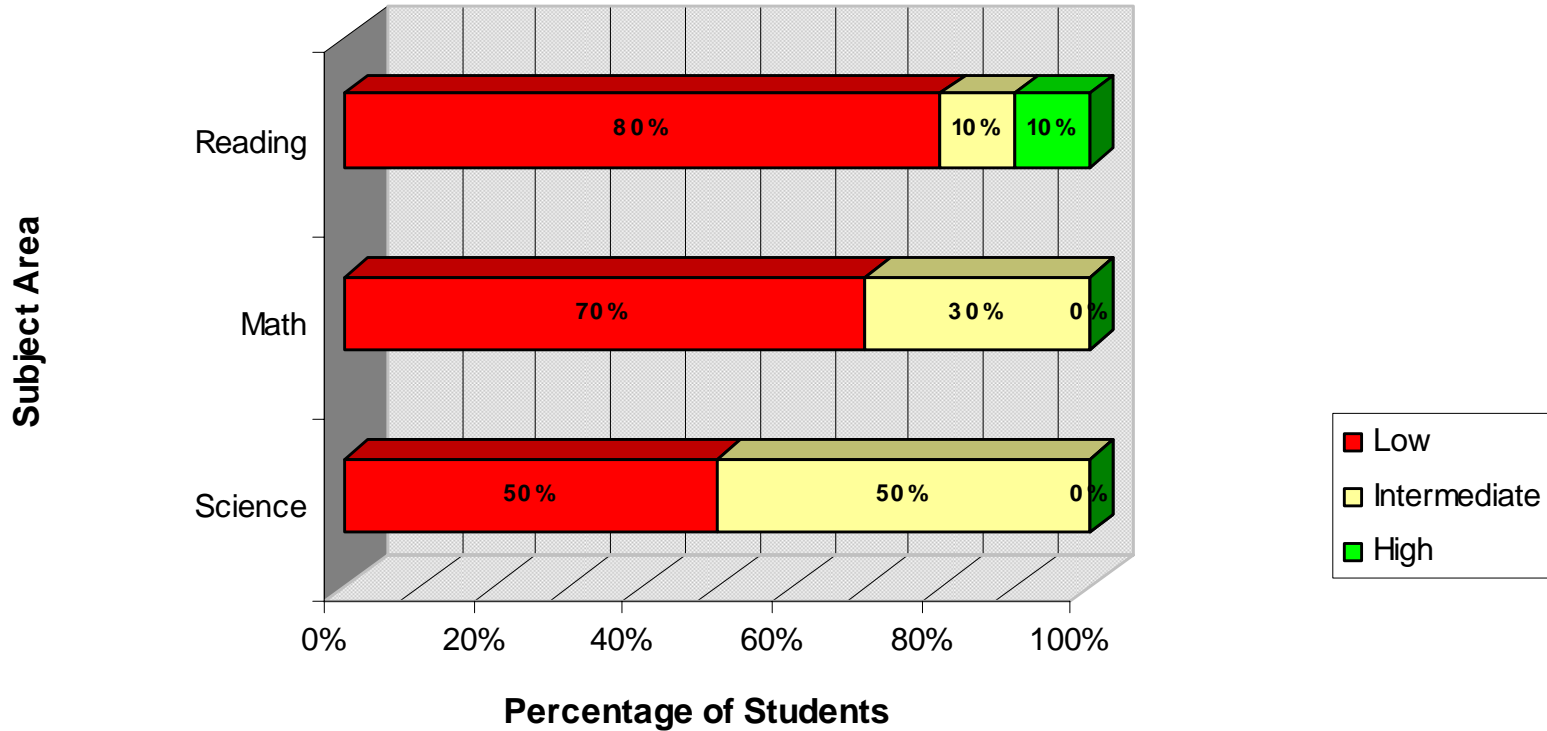
Proficiency, Grade Level, and Growth Charts based upon ITBS Reading Comprehension, Math Total, Science, and Composite Scores and Grade Equivalents

## Proficiency Levels



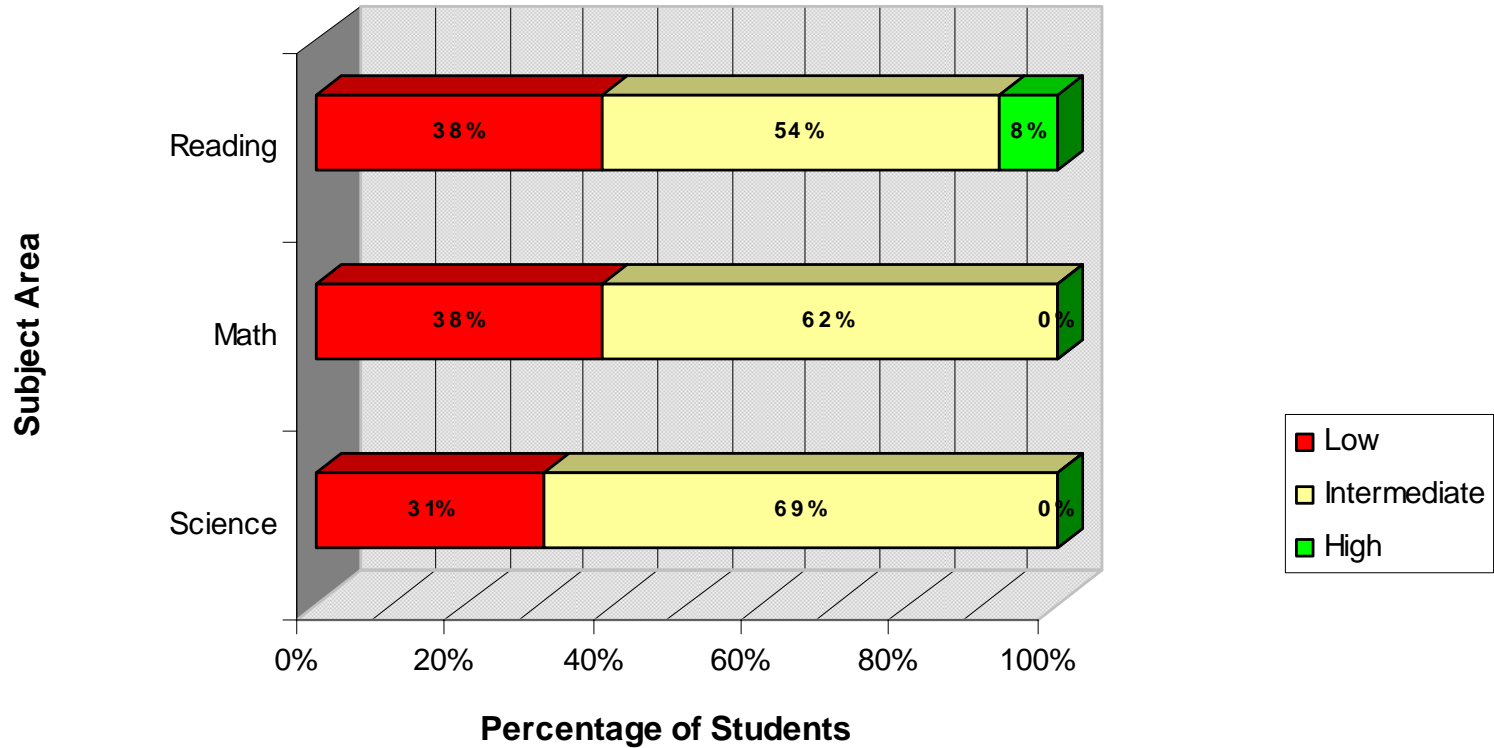
	Science	Math	Reading
High	0%	0%	9%
Intermediate	61%	48%	35%
Low	39%	52%	57%

## Proficiency Levels - Males



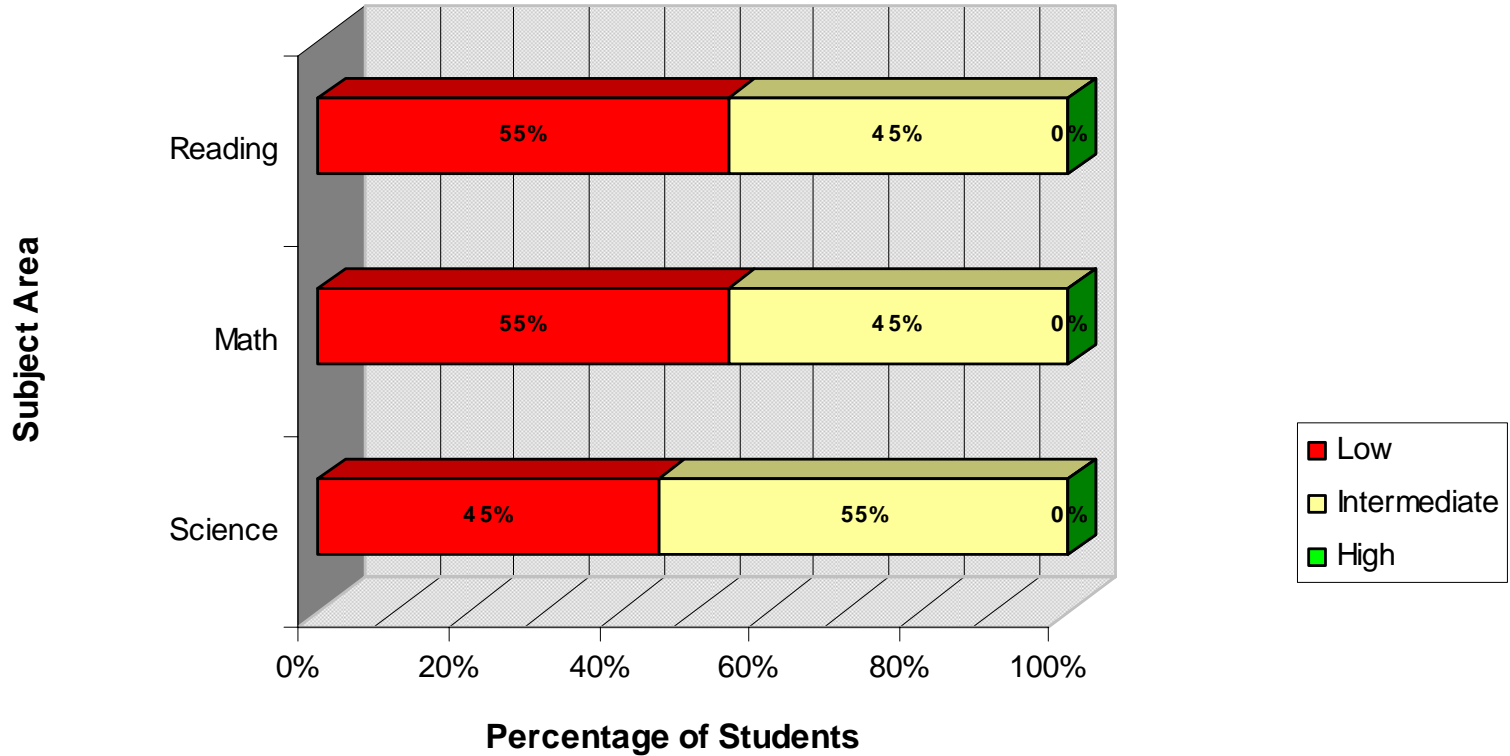
	Science	Math	Reading
High	0%	0%	10%
Intermediate	50%	30%	10%
Low	50%	70%	80%

## Proficiency Levels - Females



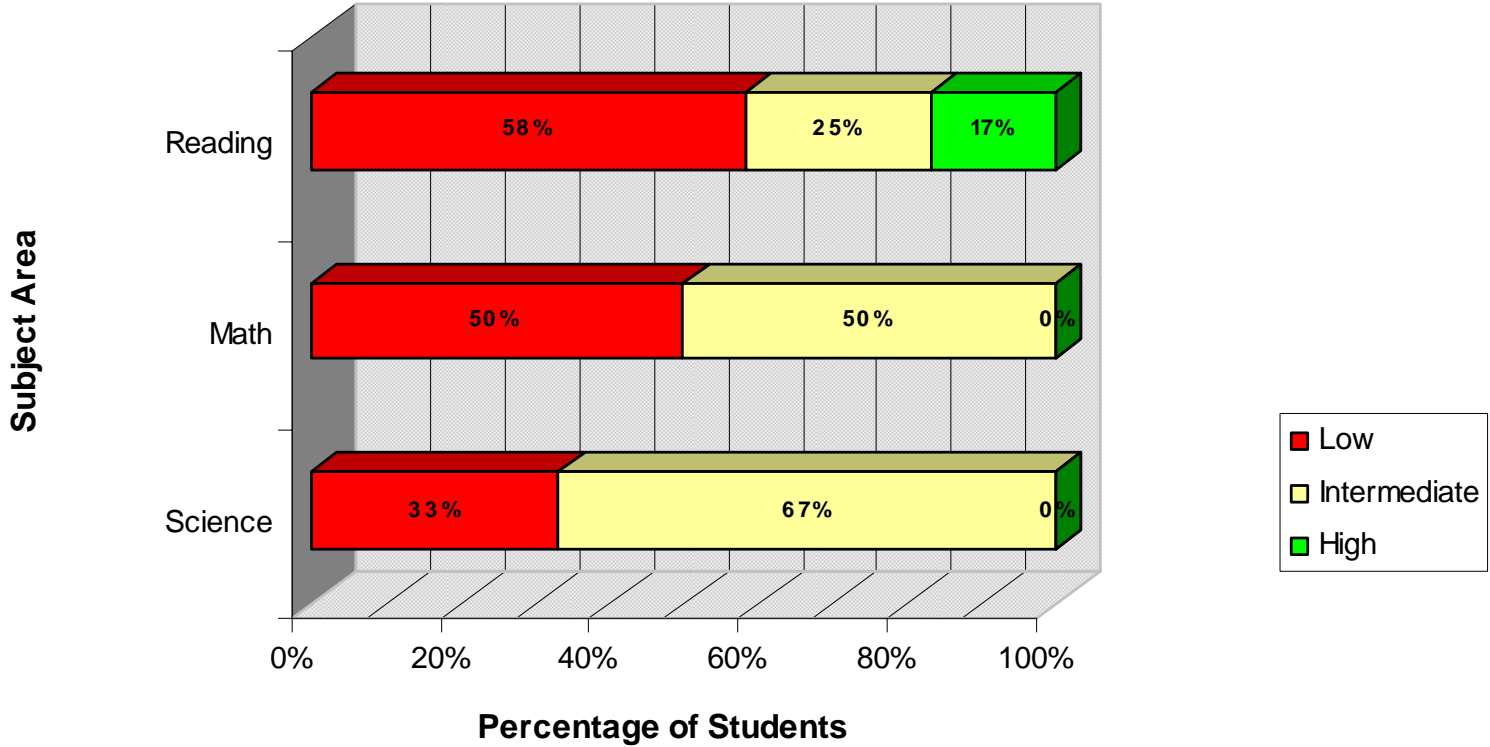
	Science	Math	Reading
High	0%	0%	8%
Intermediate	69%	62%	54%
Low	31%	38%	38%

## Proficiency Levels - Free or Reduced



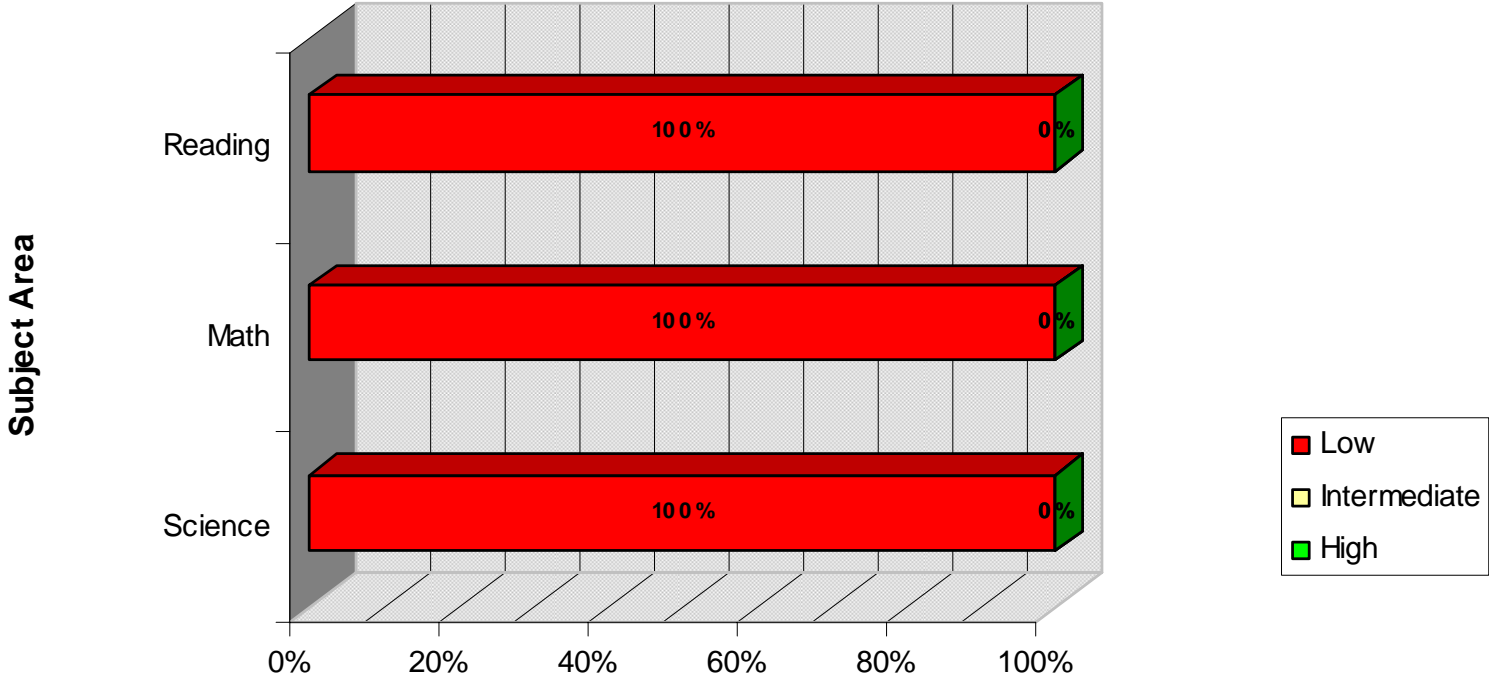
	Science	Math	Reading
High	0%	0%	0%
Intermediate	55%	45%	45%
Low	45%	55%	55%

### Proficiency Levels - Non-Free or Reduced



	Science	Math	Reading
■ High	0%	0%	17%
■ Intermediate	67%	50%	25%
■ Low	33%	50%	58%

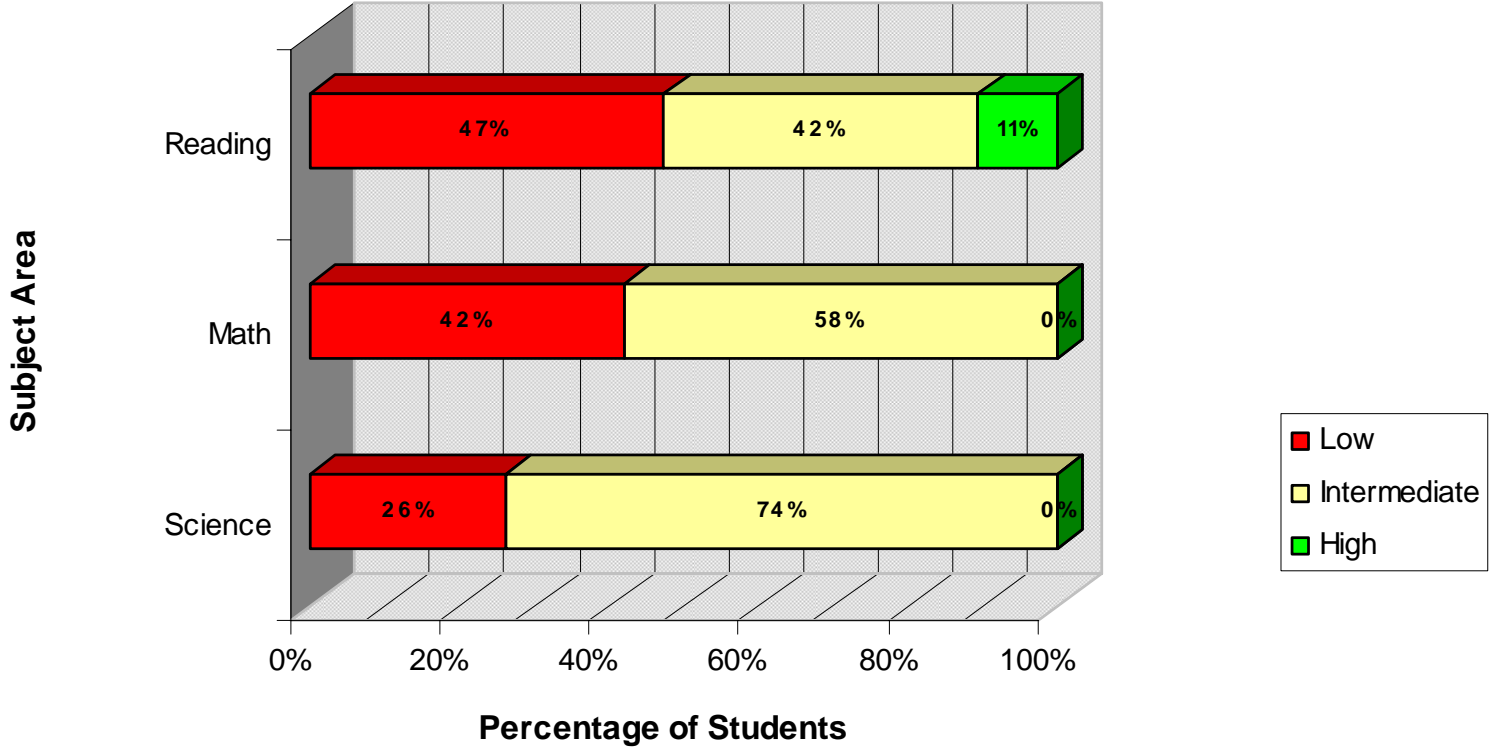
### Proficiency Levels - IEP



Percentage of Students

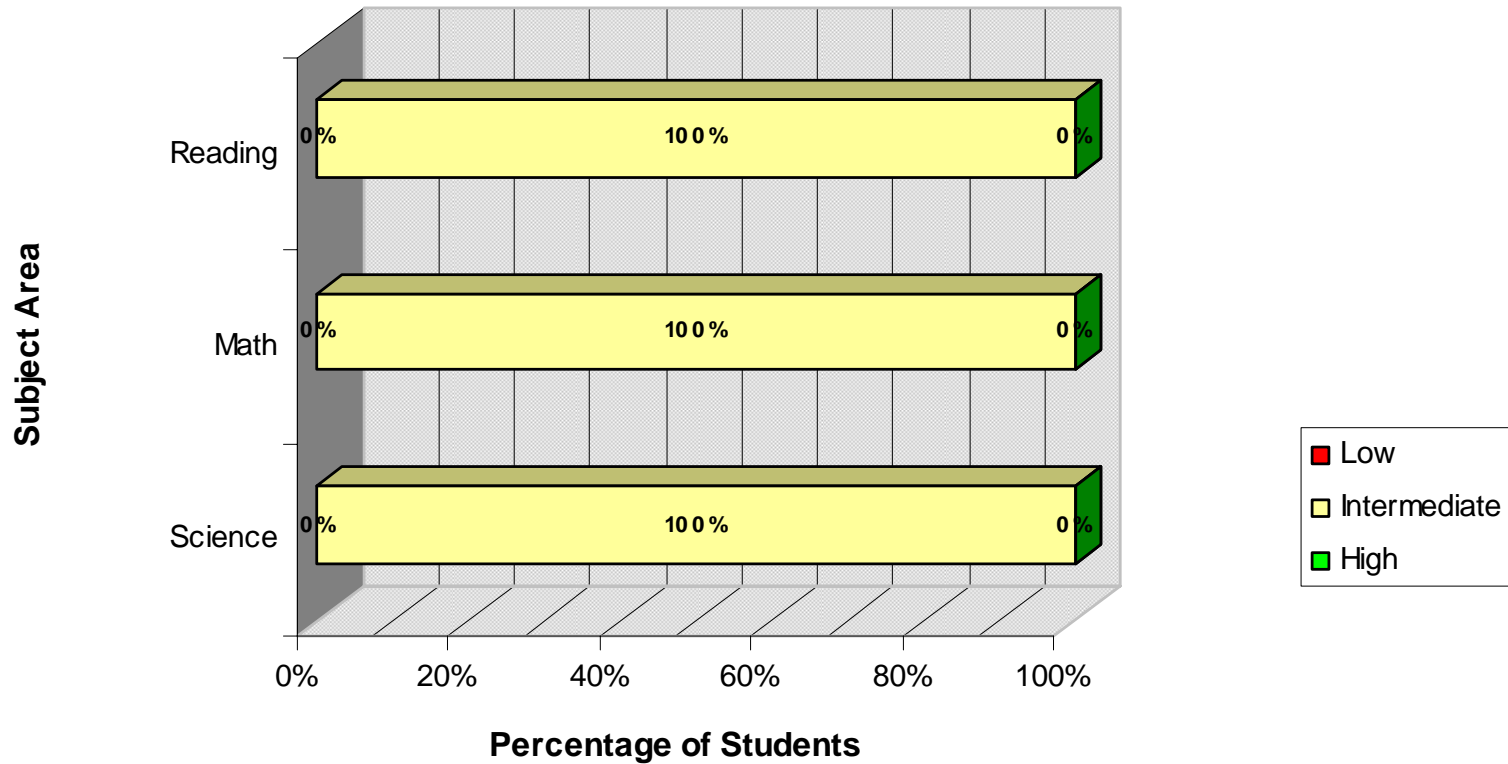
	Science	Math	Reading
High	0%	0%	0%
Intermediate	0%	0%	0%
Low	100%	100%	100%

### Proficiency Levels - Non-IEP



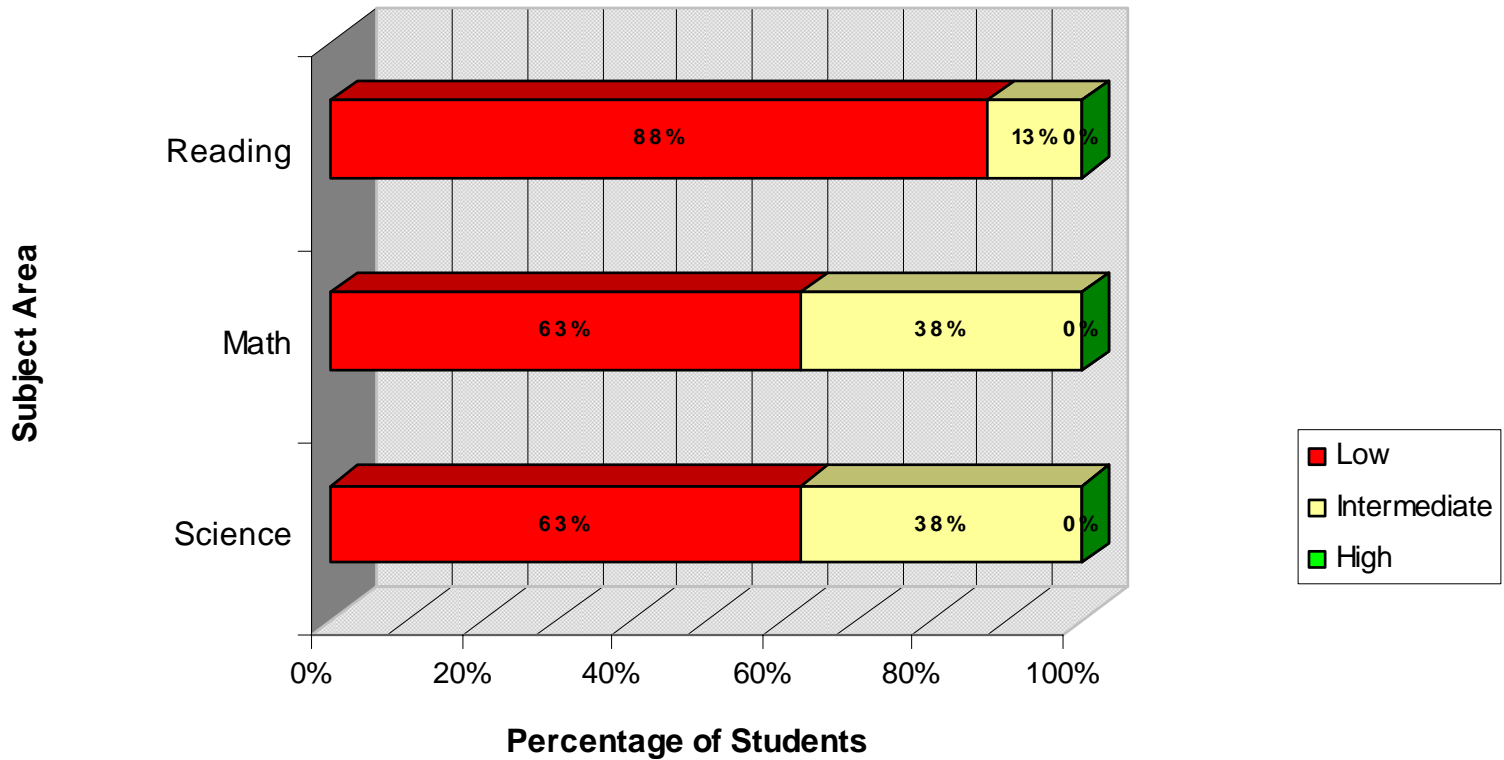
	Science	Math	Reading
High	0%	0%	11%
Intermediate	74%	58%	42%
Low	26%	42%	47%

## Proficiency Levels - Talented and Gifted



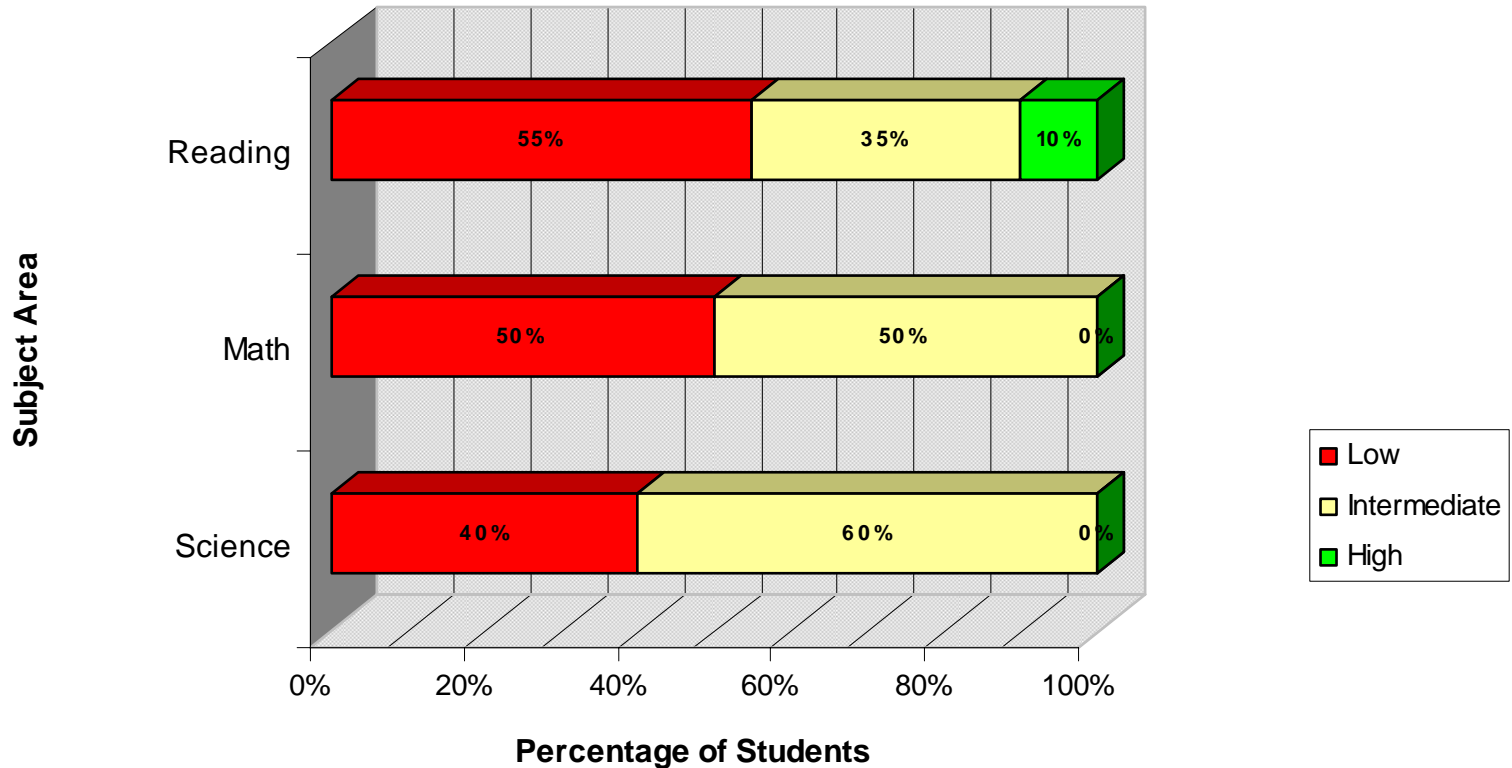
	Science	Math	Reading
High	0%	0%	0%
Intermediate	100%	100%	100%
Low	0%	0%	0%

## Proficiency Levels - Title I Language



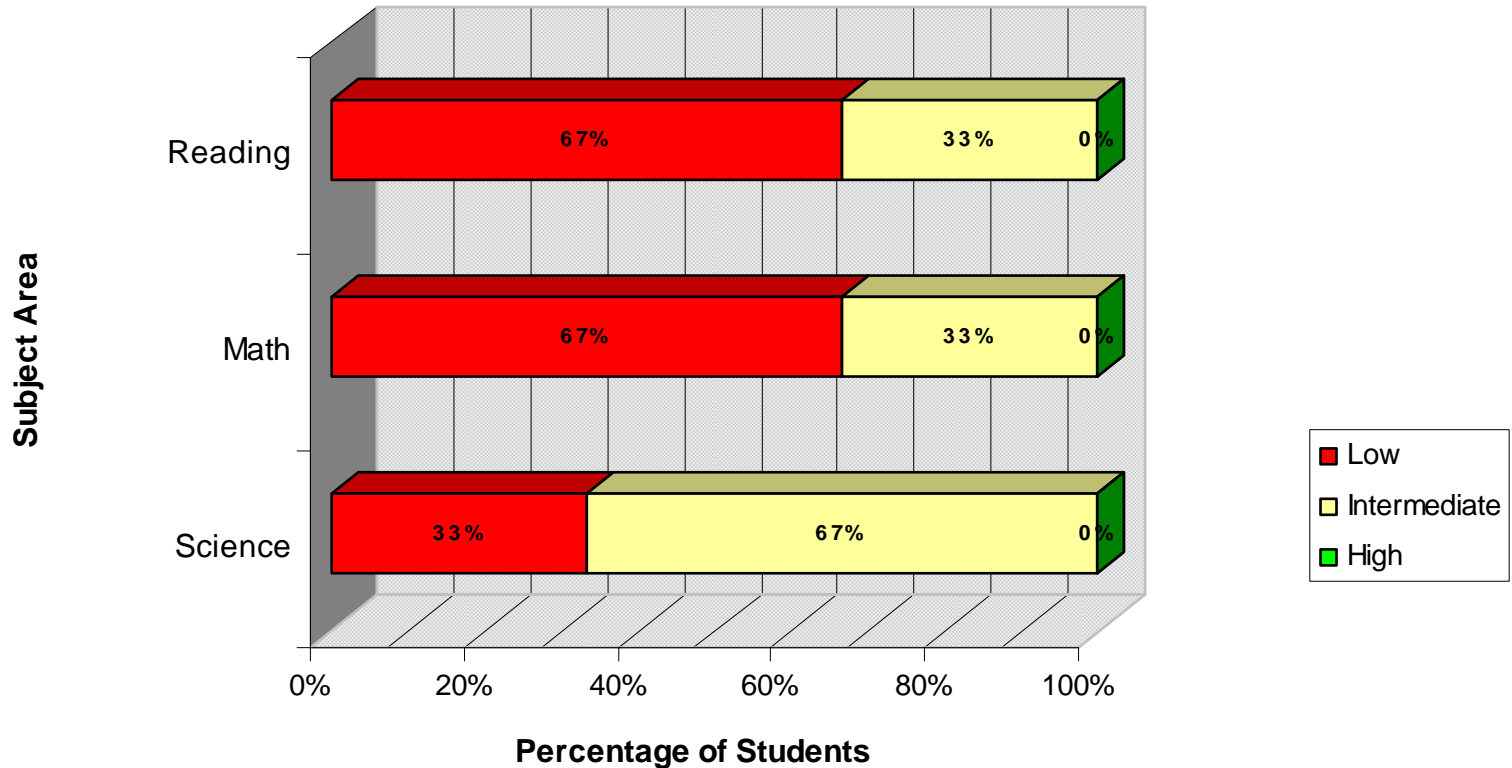
	Science	Math	Reading
High	0%	0%	0%
Intermediate	38%	38%	13%
Low	63%	63%	88%

## Proficiency Levels - Full Academic Year



	Science	Math	Reading
High	0%	0%	10%
Intermediate	60%	50%	35%
Low	40%	50%	55%

## Proficiency Levels - Non Full Academic Year



	Science	Math	Reading
High	0%	0%	0%
Intermediate	67%	33%	33%
Low	33%	67%	67%

**CURRICULUM ANALYSIS OF READING, MATH AND SCIENCE BASED UPON WAHLSTROM METHOD**

<b>N = 23</b>		<b>Students BELOW Proficiency on ITBS COMPOSITE</b>				<b>Students AT OR ABOVE Proficiency on ITBS COMPOSITE</b>			
Total below proficiency = 12		Students at 0-40 NPR				Students at 41-99 NPR			
Total at or above proficiency = 11		<b>Reporting Category Proficiencies</b>							
		Weakness		Strength		Weakness		Strength	
		0-40		41-99		0-40		41-99	
<b>Reporting Categories</b>	Mean NPR	#	%	#	%	#	%	#	%
Reading Comprehension	37%	9	75%	3	25%	4	36%	7	<b>64%</b>
Math Total	38%	10	83%	2	17%	2	18%	9	<b>82%</b>
Science	46%	8	67%	4	33%	1	9%	10	<b>91%</b>