

---

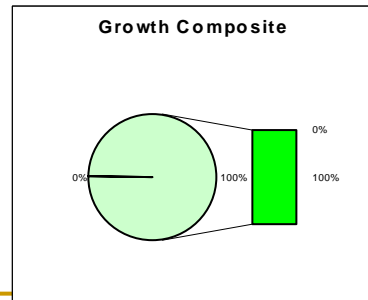
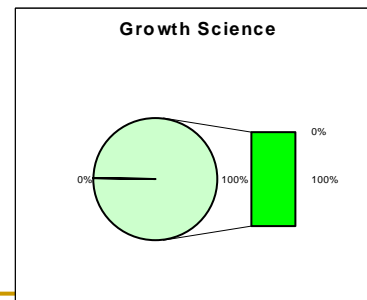
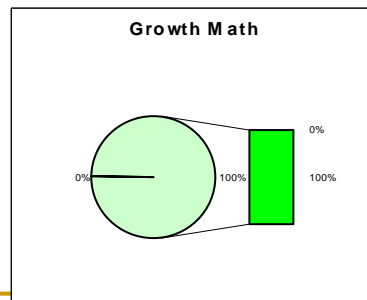
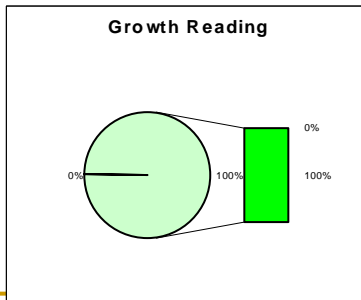
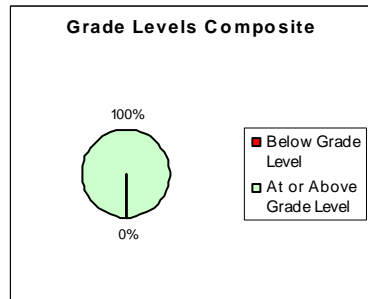
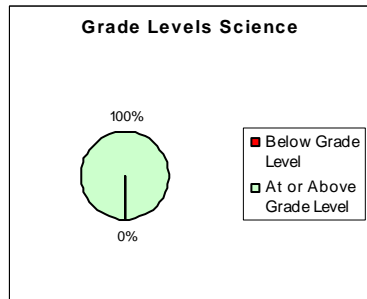
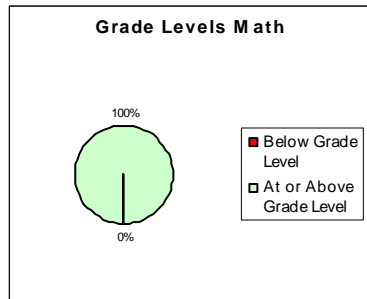
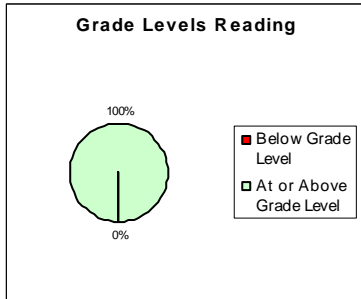
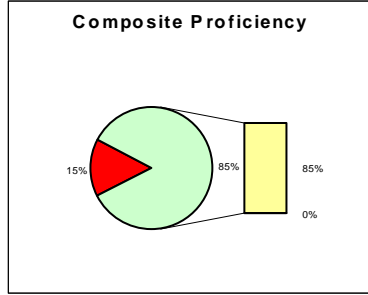
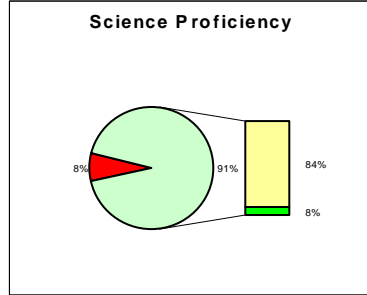
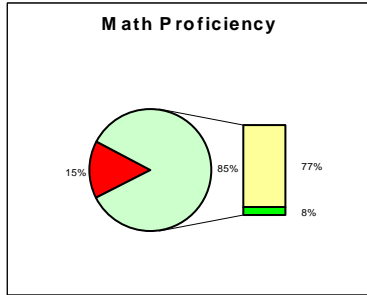
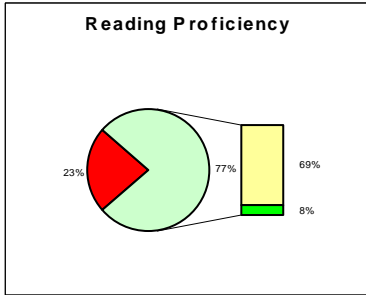
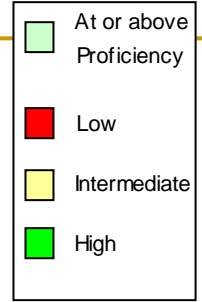
# Third Grade – Class of 2015

## ITBS

---

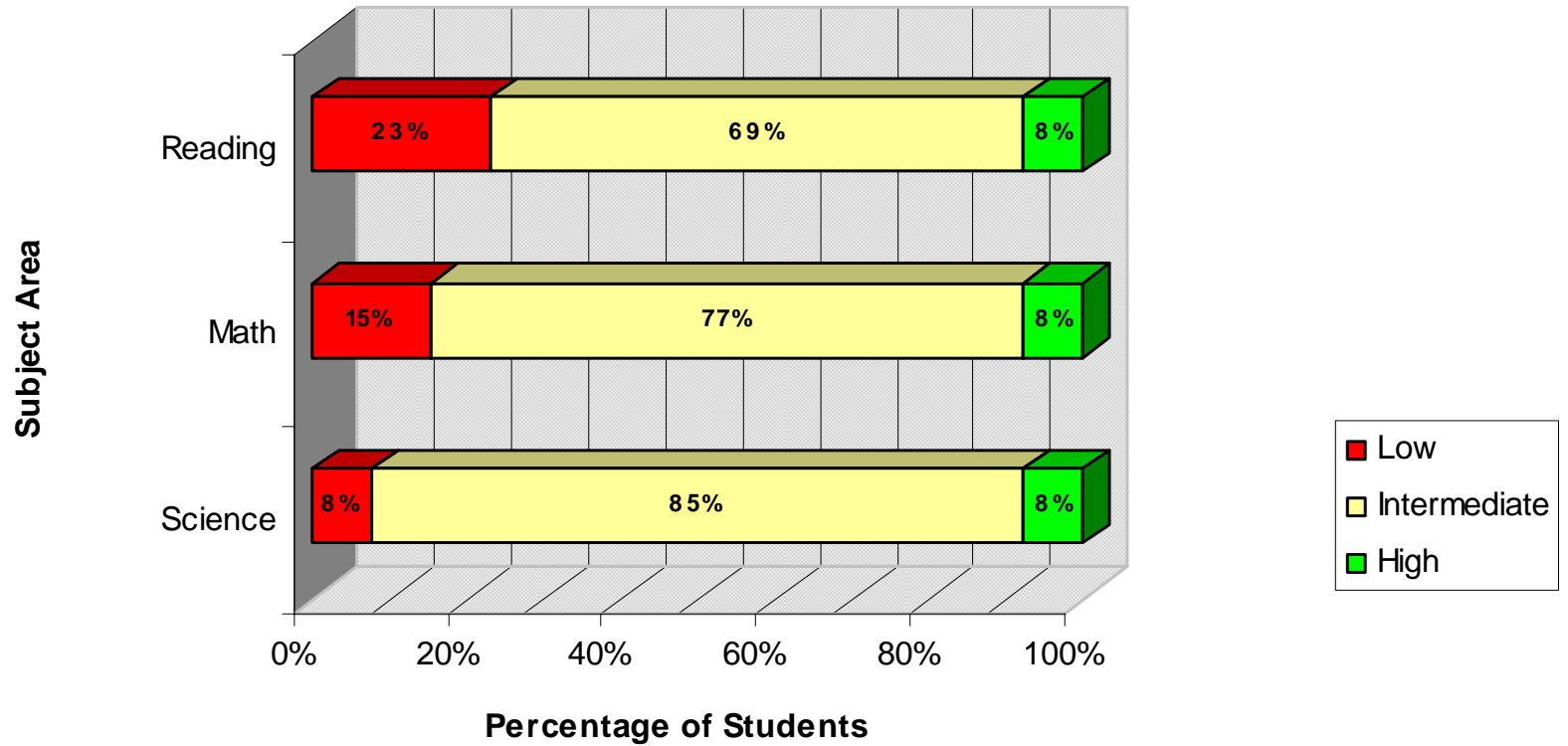
Spring 2006

# Proficiency Level, Grade Level, and Growth Charts in Reading, Math, Science, and Overall Composite



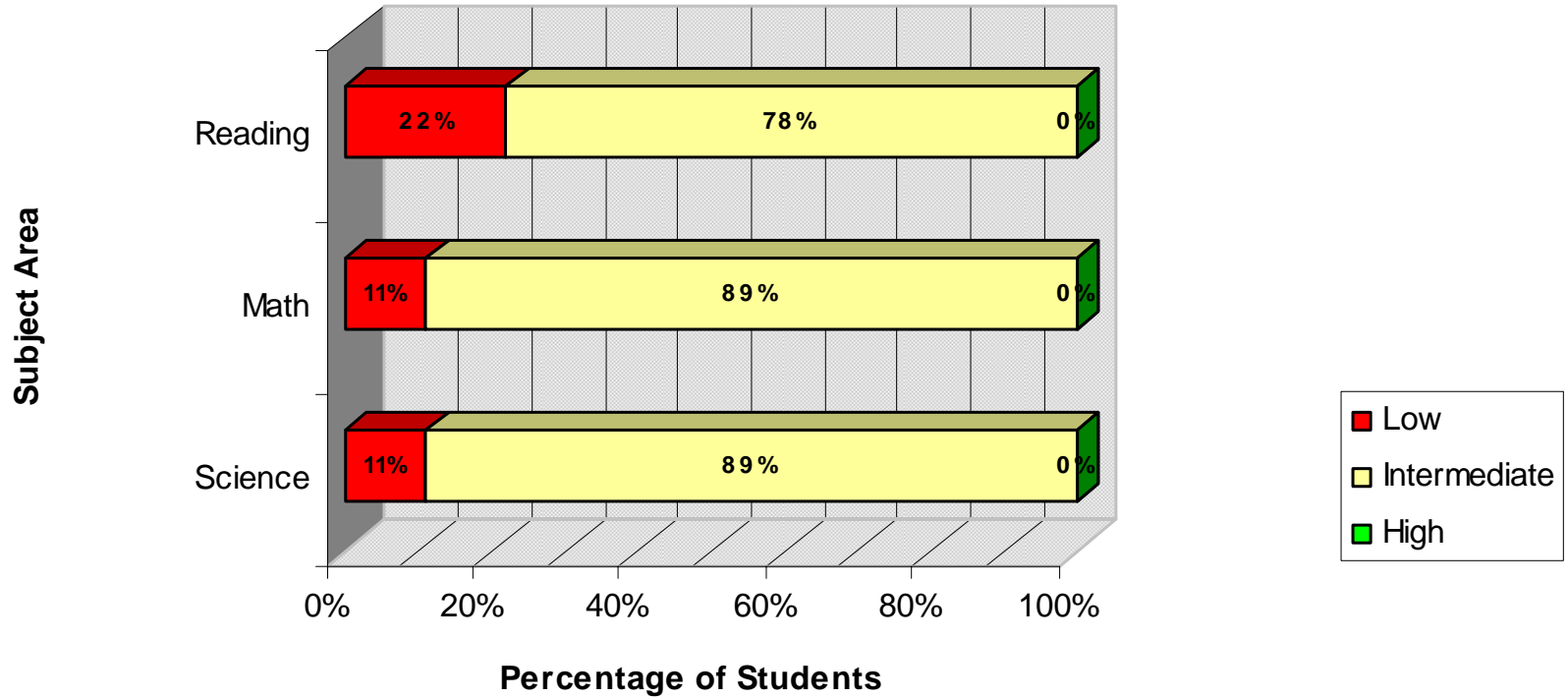
Proficiency, Grade Level, and Growth Charts based upon ITBS Reading Comprehension, Math Total, Science, and Composite Scores and Grade Equivalents

## Proficiency Levels



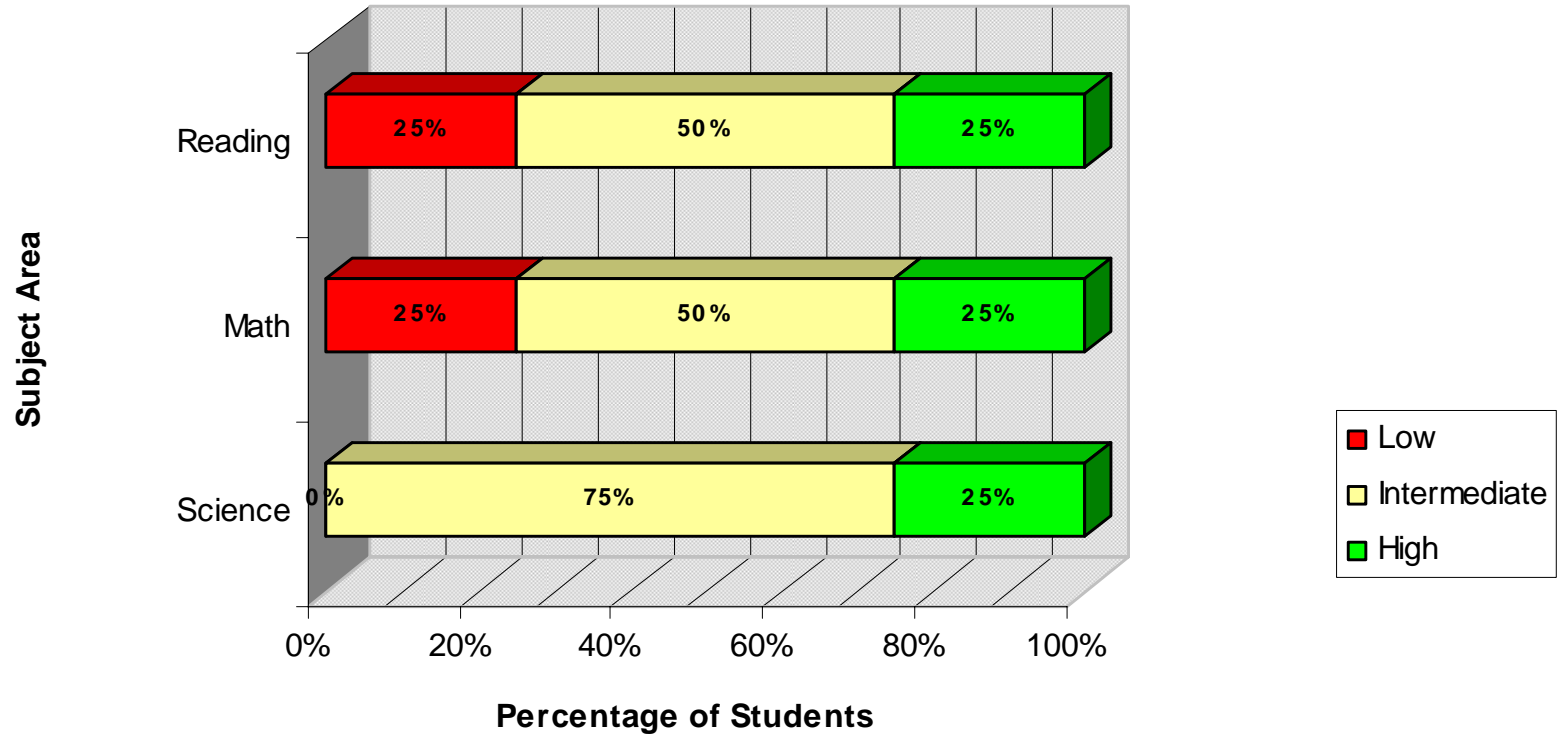
	Science	Math	Reading
■ High	8%	8%	8%
■ Intermediate	85%	77%	69%
■ Low	8%	15%	23%

## Proficiency Levels - Males



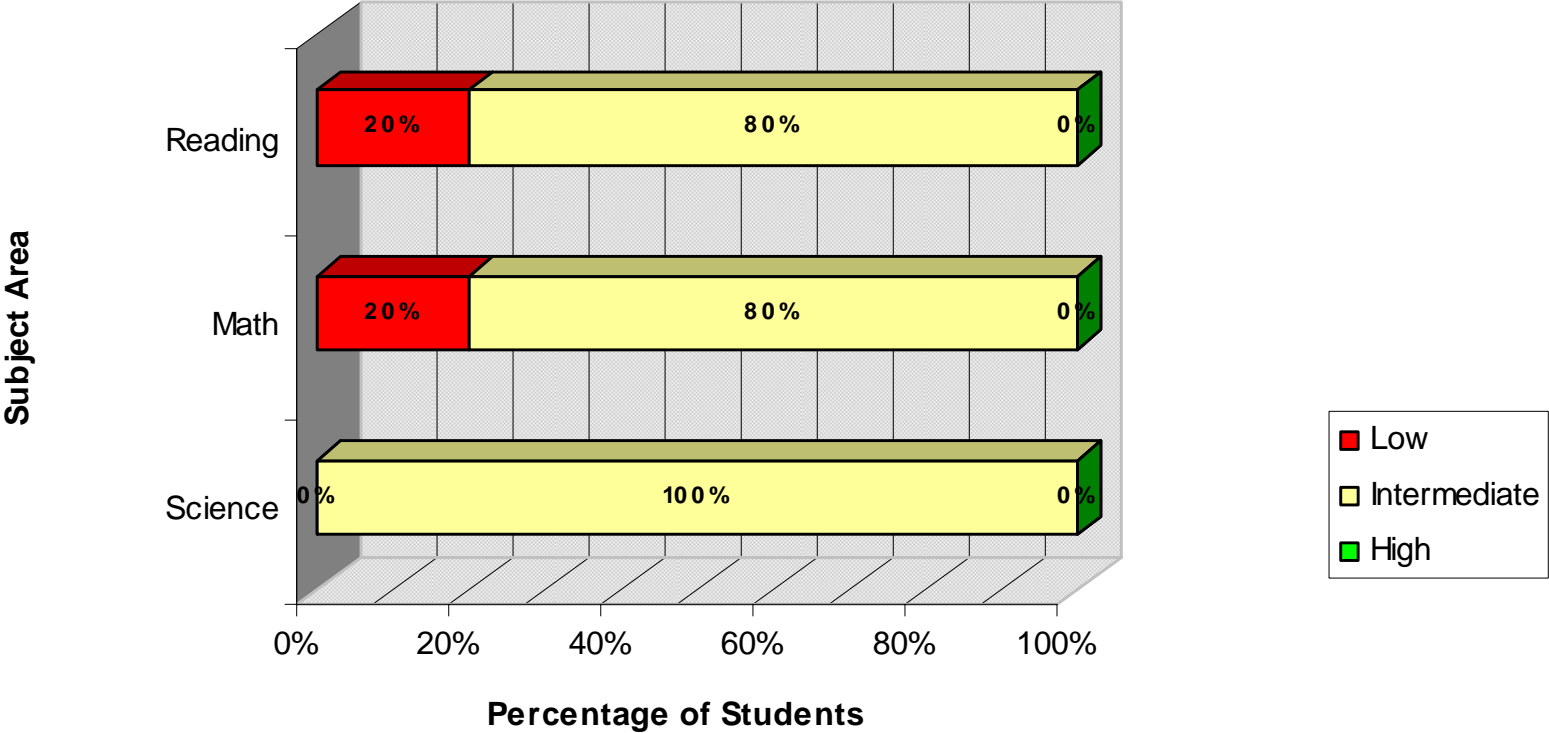
	Science	Math	Reading
High	0%	0%	0%
Intermediate	89%	89%	78%
Low	11%	11%	22%

## Proficiency Levels - Females



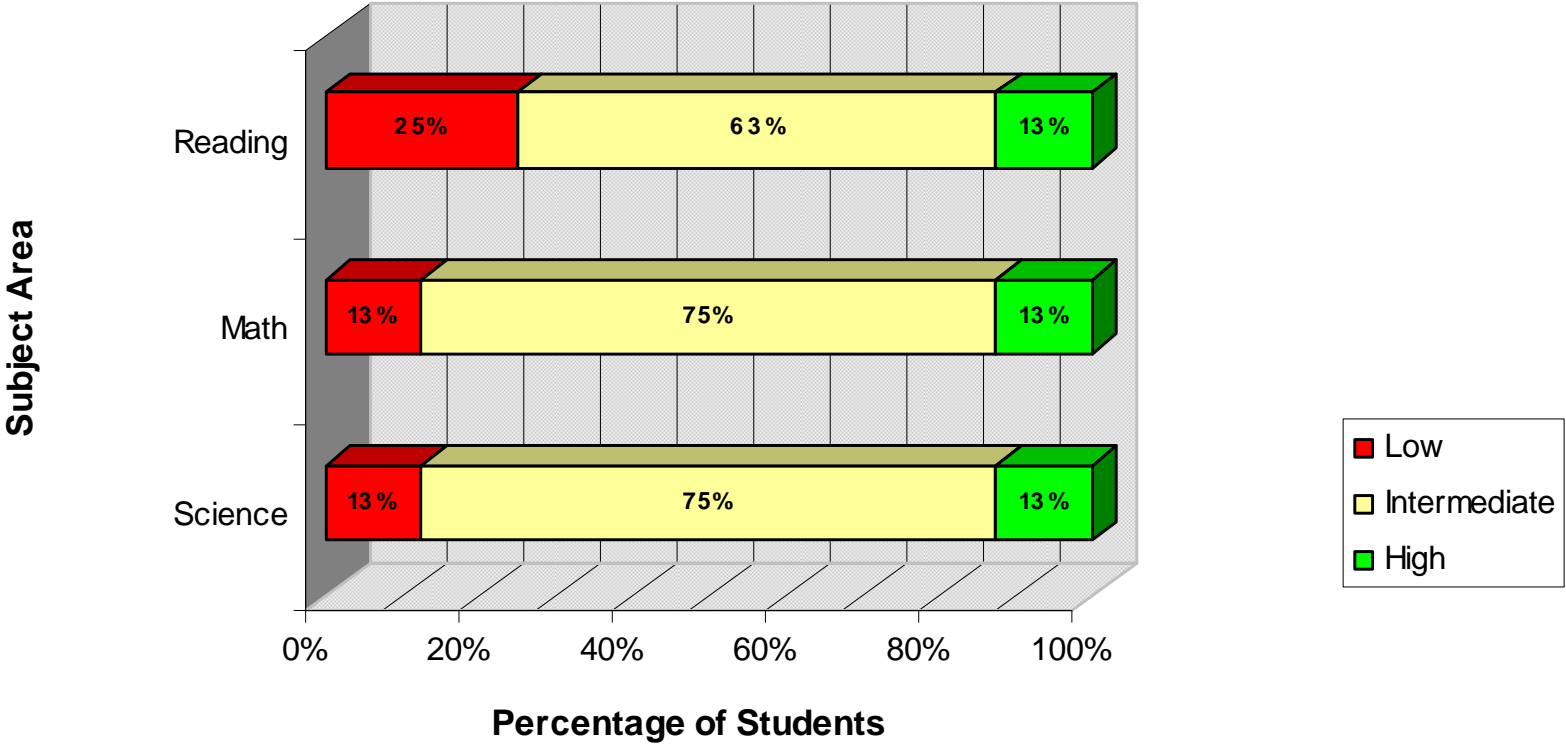
	Science	Math	Reading
High	25%	25%	25%
Intermediate	75%	50%	50%
Low	0%	25%	25%

### Proficiency Levels - Free or Reduced



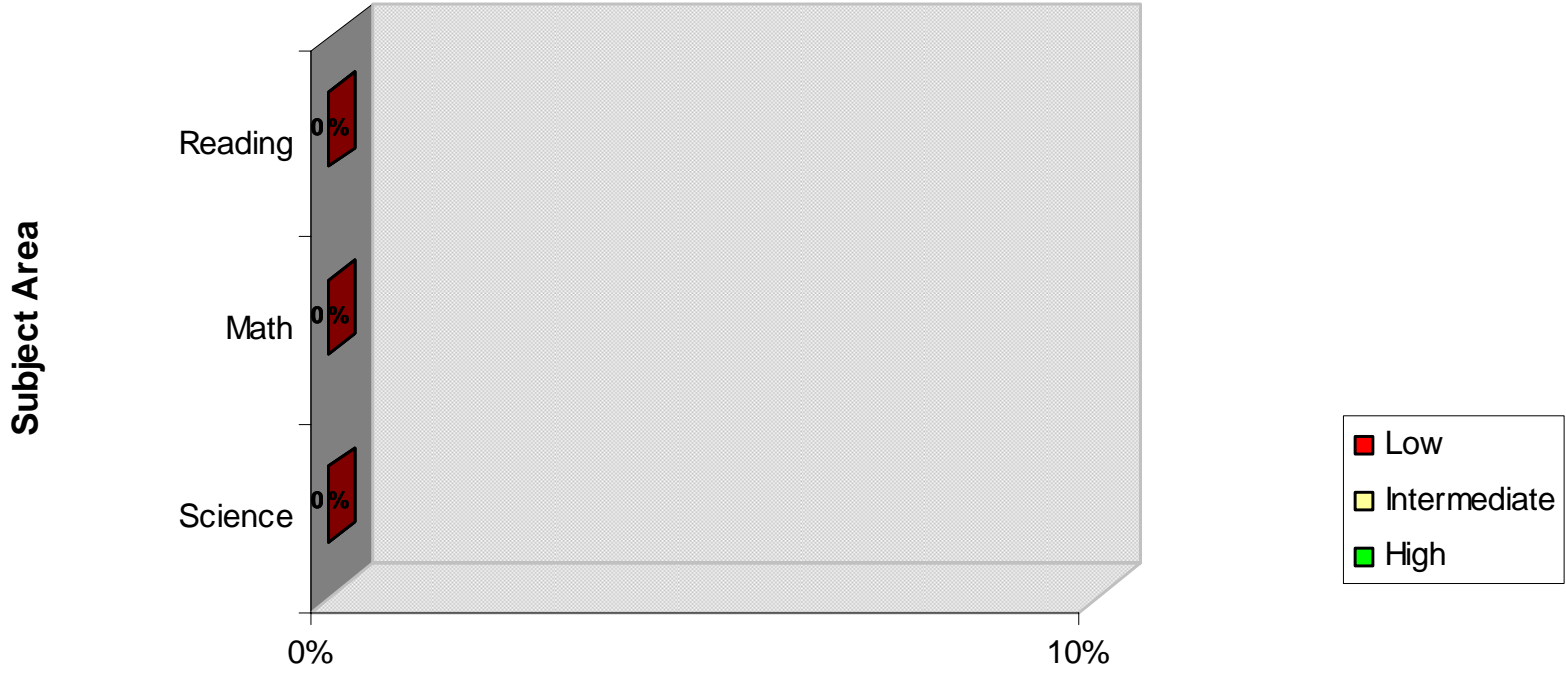
	Science	Math	Reading
High	0%	0%	0%
Intermediate	100%	80%	80%
Low	0%	20%	20%

### Proficiency Levels - Non-Free or Reduced



	Science	Math	Reading
High	13%	13%	13%
Intermediate	75%	75%	63%
Low	13%	13%	25%

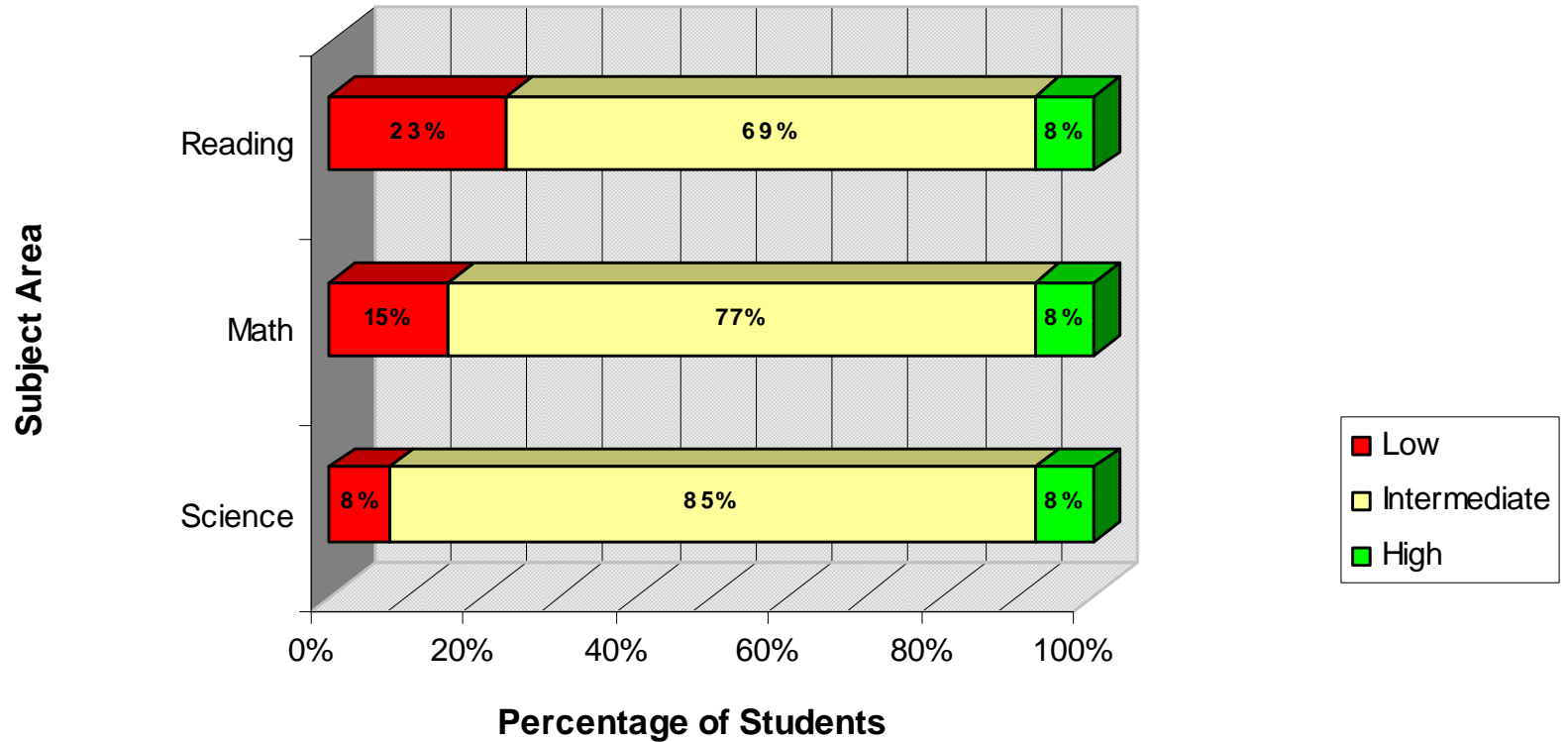
# Proficiency Levels - IEP



Percentage of Students

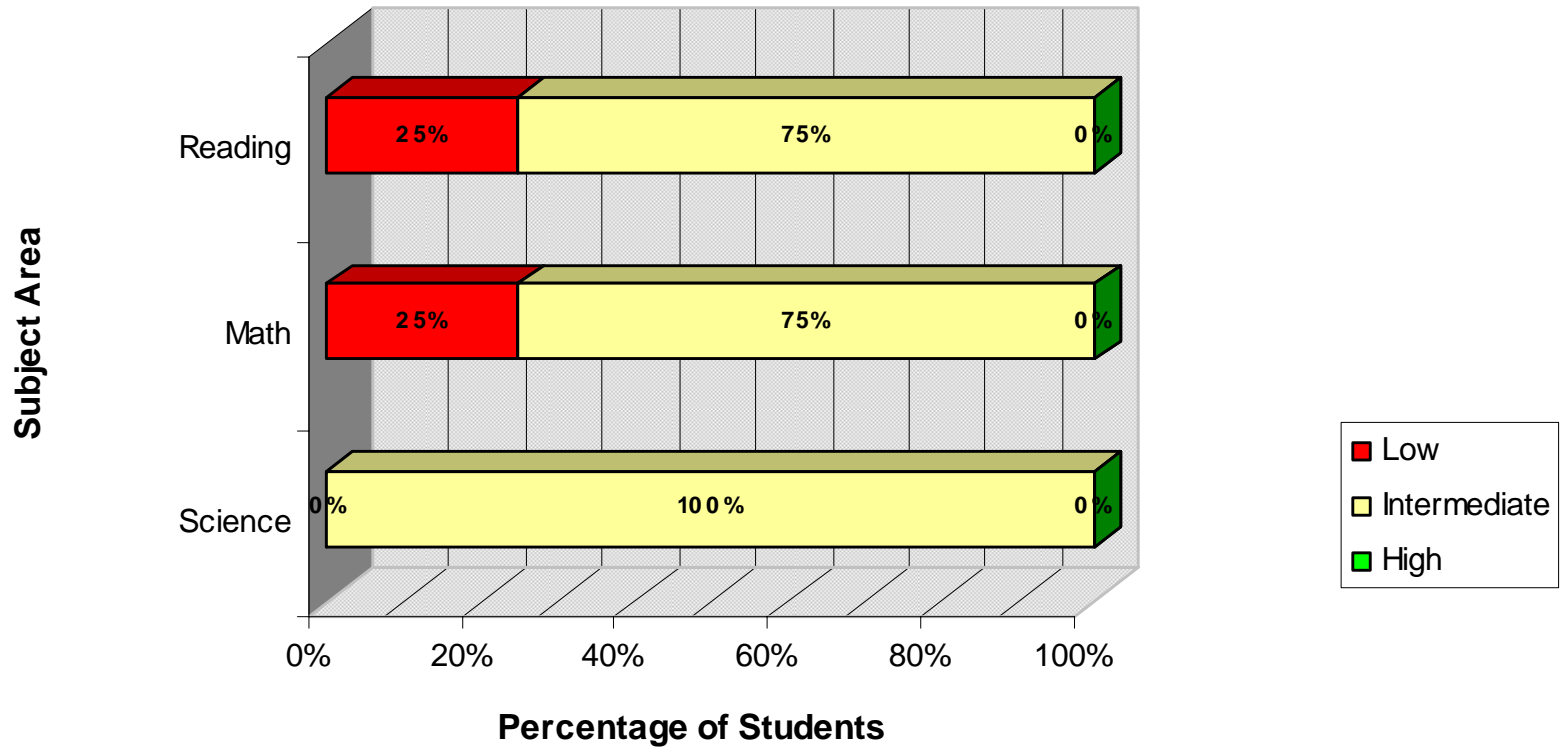
	Science	Math	Reading
■ High	0%	0%	0%
■ Intermediate	0%	0%	0%
■ Low	0%	0%	0%

## Proficiency Levels - Non-IEP



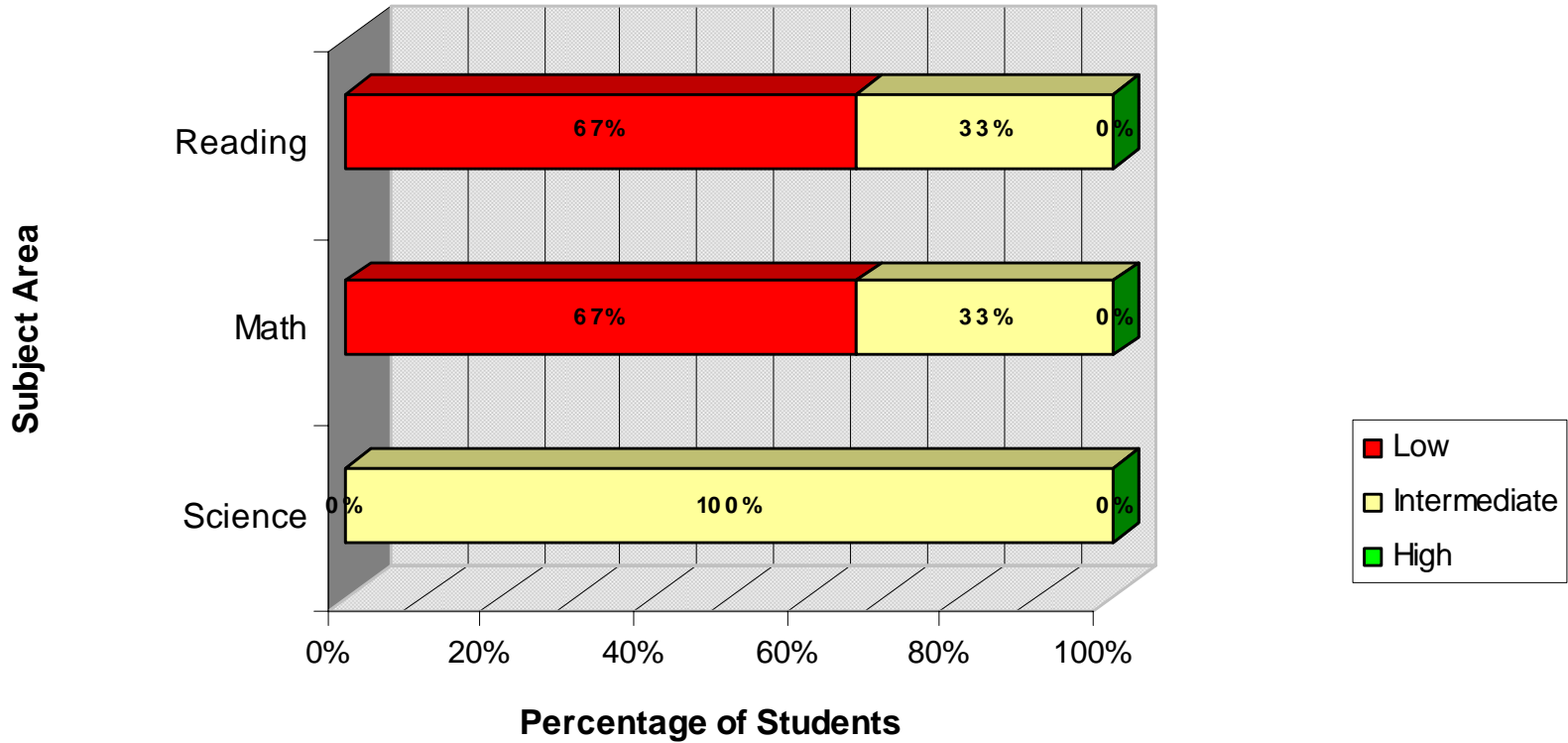
	Science	Math	Reading
■ High	8%	8%	8%
■ Intermediate	85%	77%	69%
■ Low	8%	15%	23%

## Proficiency Levels - Preschool Experience



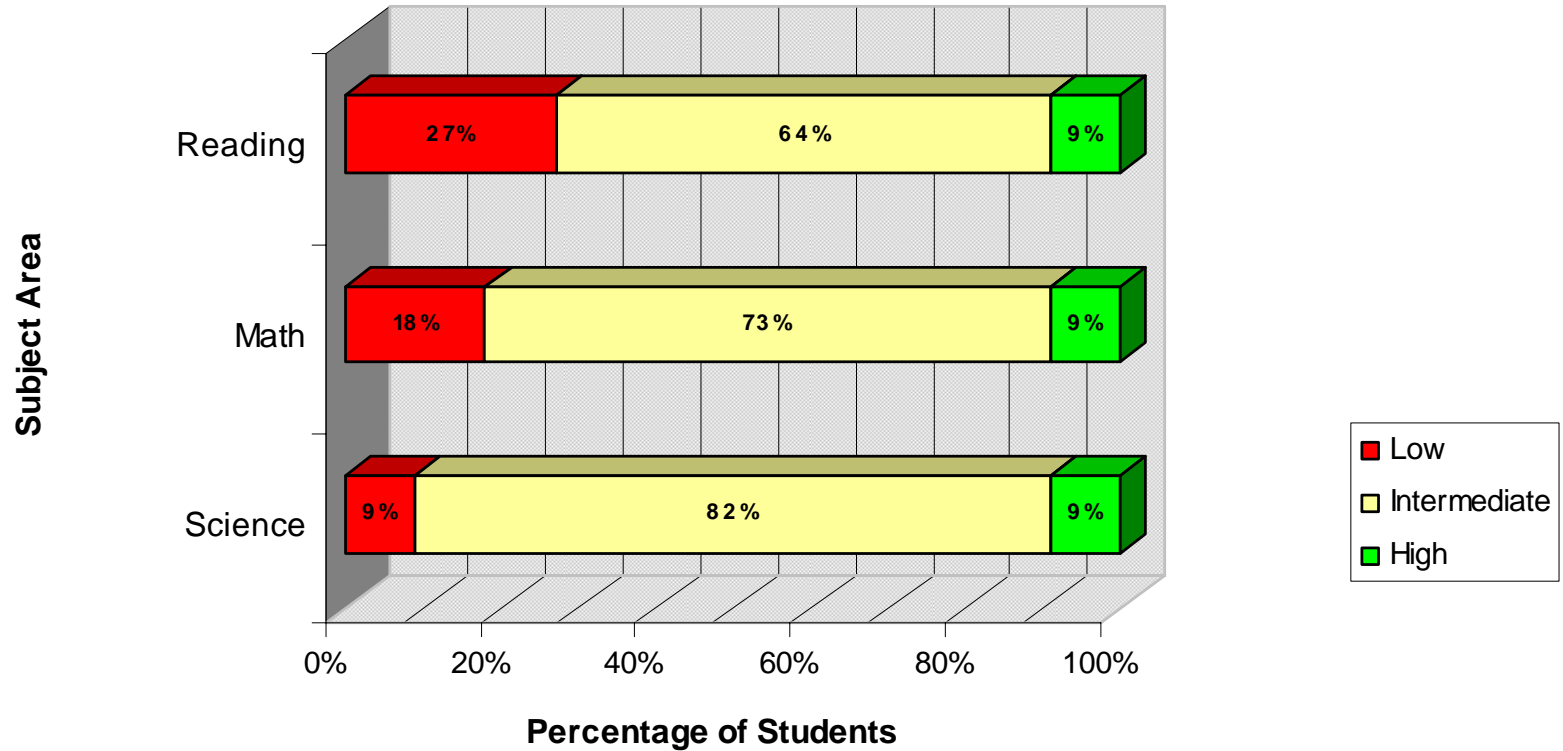
	Science	Math	Reading
■ High	0%	0%	0%
■ Intermediate	100%	75%	75%
■ Low	0%	25%	25%

## Proficiency Levels - Title I Language



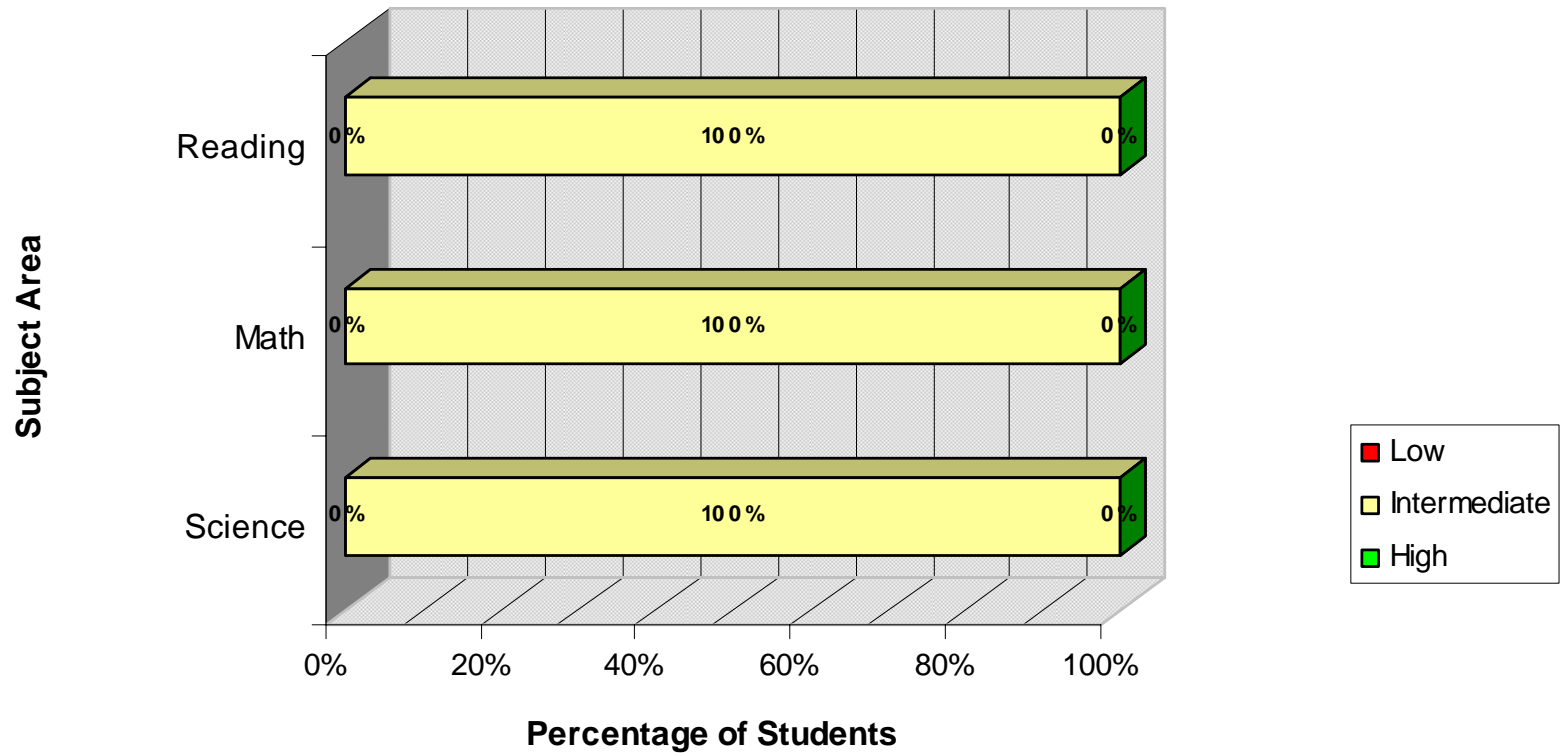
	Science	Math	Reading
High	0%	0%	0%
Intermediate	100%	33%	33%
Low	0%	67%	67%

## Proficiency Levels - Full Academic Year



	Science	Math	Reading
High	9%	9%	9%
Intermediate	82%	73%	64%
Low	9%	18%	27%

## Proficiency Levels - Non Full Academic Year



	Science	Math	Reading
High	0%	0%	0%
Intermediate	100%	100%	100%
Low	0%	0%	0%

<b>CURRICULUM ANALYSIS OF READING, MATH AND SCIENCE BASED UPON WAHLSTROM METHOD</b>									
<b>N = 13</b>		<b>Students BELOW Proficiency on ITBS COMPOSITE</b>				<b>Students AT OR ABOVE Proficiency on ITBS COMPOSITE</b>			
Total below proficiency = 2		Students at 0-40 NPR				Students at 41-99 NPR			
Total at or above proficiency = 11		<b>Reporting Category Proficiencies</b>							
		Weakness		Strength		Weakness		Strength	
		0-40		41-99		0-40		41-99	
<b>Reporting Categories</b>	Mean NPR	#	%	#	%	#	%	#	%
Reading Comprehension	61%	2	100%	0	0%	1	9%	10	<b>91%</b>
Math Total	62%	2	100%	0	0%	0	0%	11	<b>100%</b>
Science	65%	0	0%	2	100%	1	9%	10	<b>91%</b>